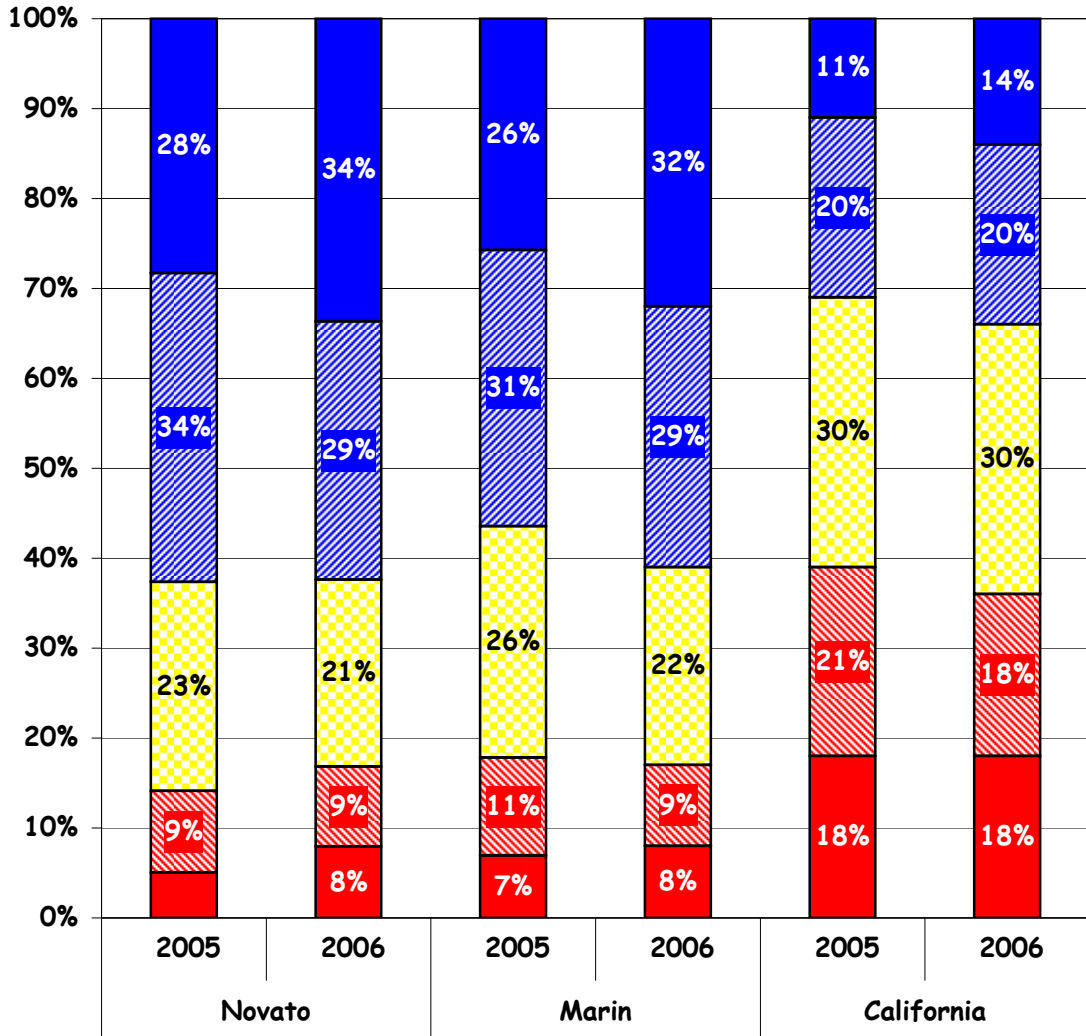


History/Social Science Standards Performance Levels  
Novato/Marin/California

**History/Social Science Grade 8 Cumulative**



Advanced	28%	34%	26%	32%	11%	14%
Proficient	34%	29%	31%	29%	20%	20%
Basic	23%	21%	26%	22%	30%	30%
Below Basic	9%	9%	11%	9%	21%	18%
Far Below Basic	5%	8%	7%	8%	18%	18%

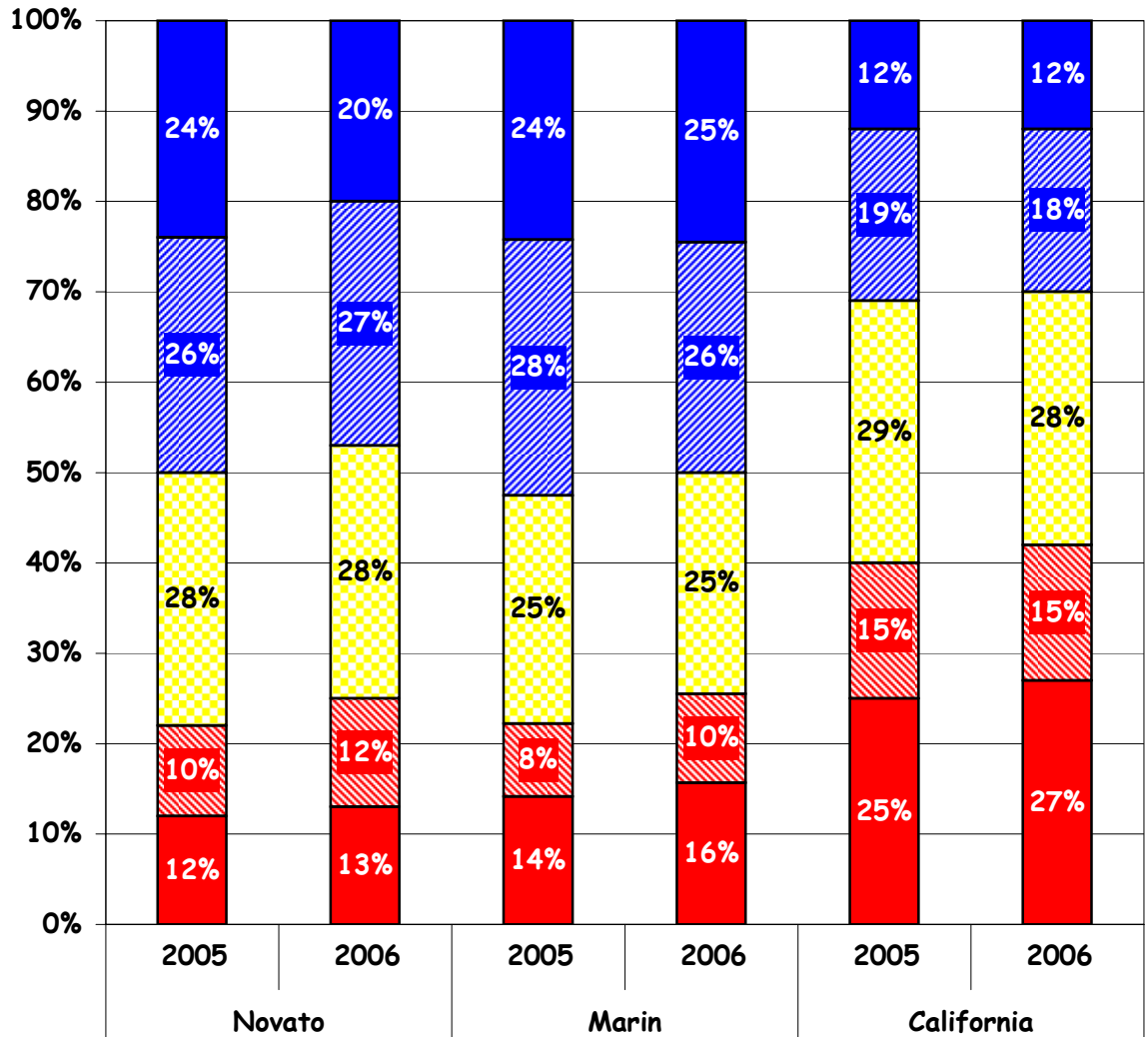
**% Passing (Advanced + Proficient)**

**% Enrollment Tested**

	<u>2005</u>	<u>2006</u>	<u>2005</u>	<u>2006</u>
<b>Novato</b>	<b>62%</b>	<b>63%</b>	<b>99%</b>	<b>99%</b>
<b>Marin</b>	<b>57%</b>	<b>61%</b>	<b>98%</b>	<b>98%</b>
<b>California</b>	<b>31%</b>	<b>34%</b>	<b>98%</b>	<b>98%</b>

History/Social Science Standards Performance Levels  
Novato/Marin/California

**World History - Grade 10**



Advanced	24%	20%	24%	25%	12%	12%
Proficient	26%	27%	28%	26%	19%	18%
Basic	28%	28%	25%	25%	29%	28%
Below Basic	10%	12%	8%	10%	15%	15%
Far Below Basic	12%	13%	14%	16%	25%	27%

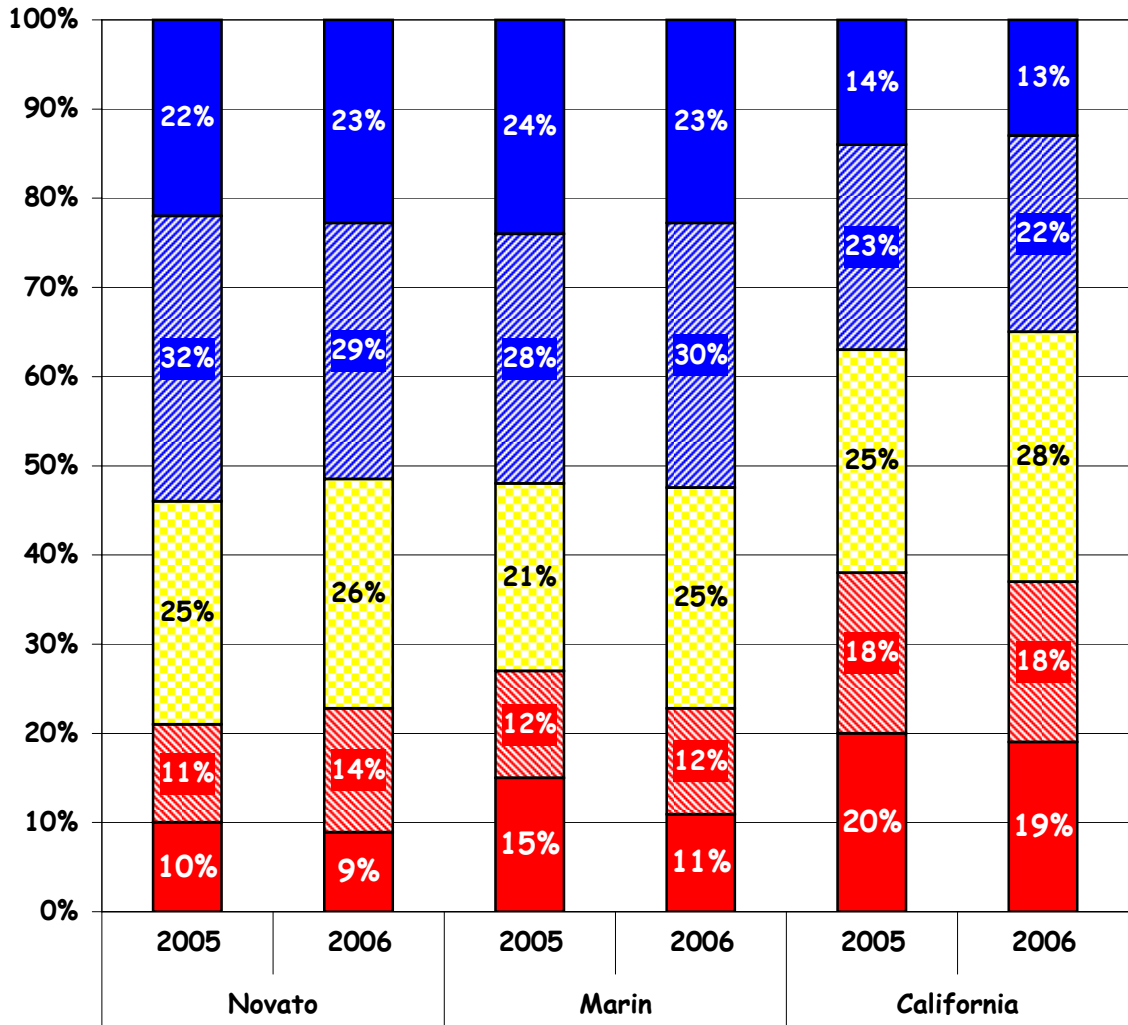
**% Passing (Advanced + Proficient)**

**% Enrollment Tested**

	<u>2005</u>	<u>2006</u>	<u>2005</u>	<u>2006</u>
<b>Novato</b>	<b>50%</b>	<b>47%</b>	<b>96%</b>	<b>97%</b>
<b>Marin</b>	<b>52%</b>	<b>51%</b>	<b>95%</b>	<b>96%</b>
<b>California</b>	<b>31%</b>	<b>30%</b>	<b>94%</b>	<b>95%</b>

History/Social Science Standards Performance Levels  
Novato/Marin/California

**U.S. History - Grade 11**



	2005	2006	2005	2006	2005	2006
Advanced	22%	23%	24%	23%	14%	13%
Proficient	32%	29%	28%	30%	23%	22%
Basic	25%	26%	21%	25%	25%	28%
Below Basic	11%	14%	12%	12%	18%	18%
Far Below Basic	10%	9%	15%	11%	20%	19%

	<u>% Passing (Advanced + Proficient)</u>		<u>% Enrollment Tested</u>	
	2005	2006	2005	2006
Novato	54%	52%	86%	95%
Marin	52%	53%	90%	93%
California	37%	35%	93%	93%