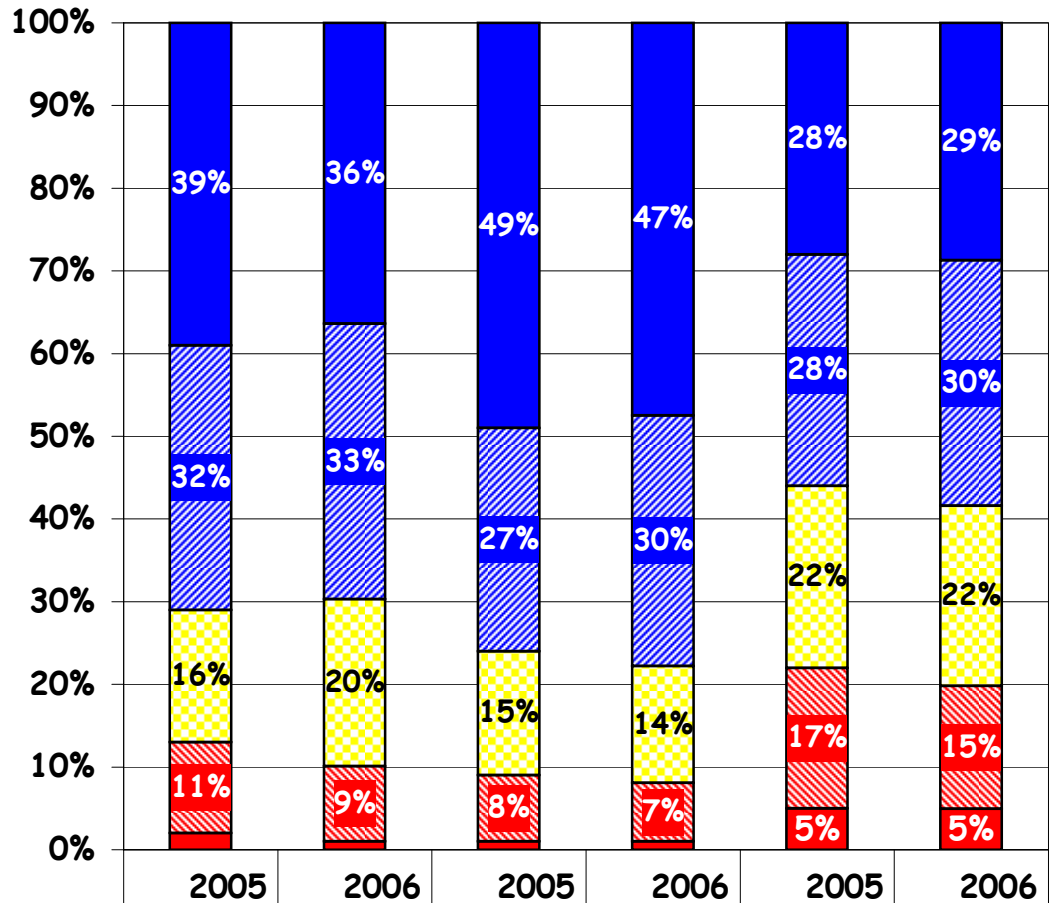


Mathematics Standards Performance Levels
Novato/Marin/California

Grade 2



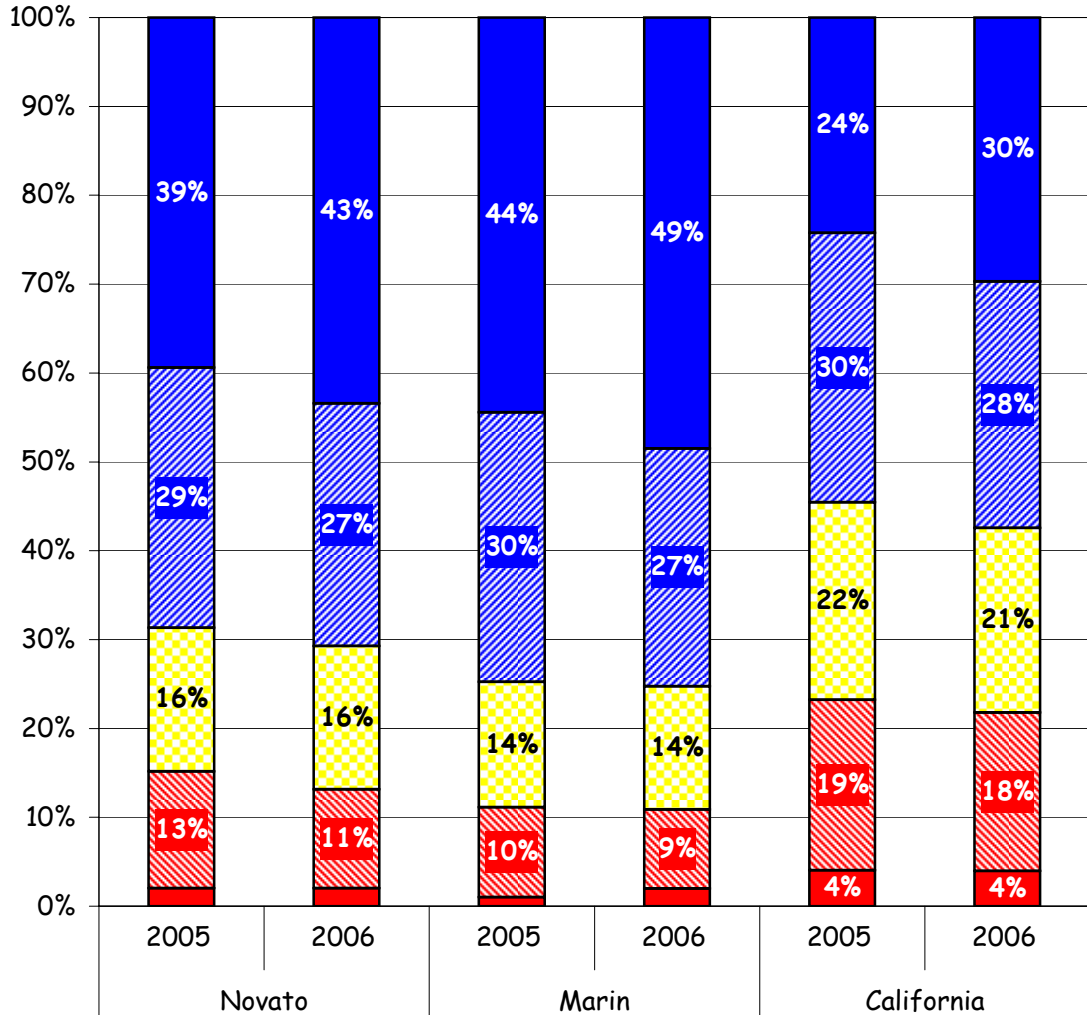
	2005	2006	2005	2006	2005	2006
	Novato		Marin		California	
Advanced	39%	36%	49%	47%	28%	29%
Proficient	32%	33%	27%	30%	28%	30%
Basic	16%	20%	15%	14%	22%	22%
Below Basic	11%	9%	8%	7%	17%	15%
Far Below Basic	2%	1%	1%	1%	5%	5%

% Passing (Advanced + Proficient)

	2005	2006
Novato	71%	69%
Marin	76%	77%
California	56%	59%

**Mathematics Standards Performance Levels
Novato/Marin/California**

Grade 3



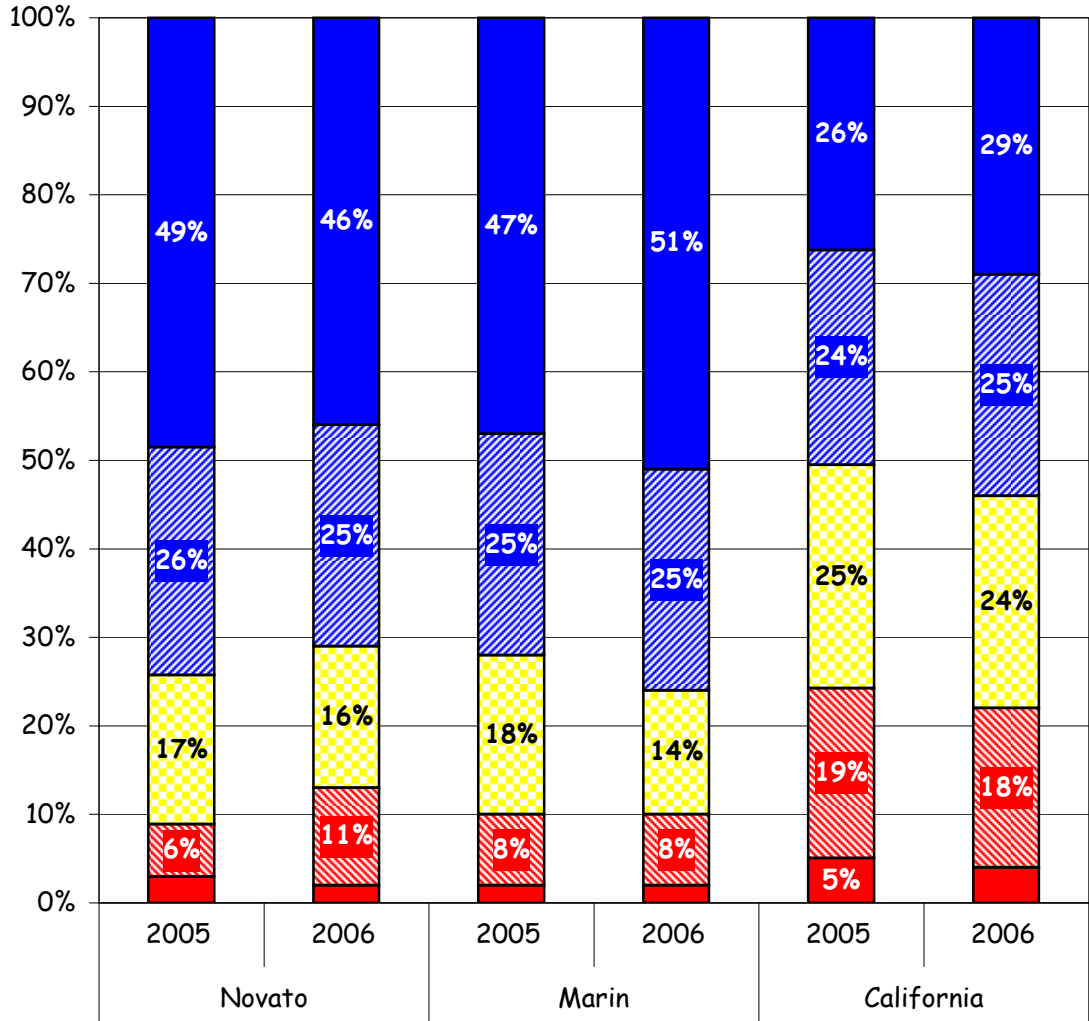
Advanced	39%	43%	44%	49%	24%	30%
Proficient	29%	27%	30%	27%	30%	28%
Basic	16%	16%	14%	14%	22%	21%
Below Basic	13%	11%	10%	9%	19%	18%
Far Below Basic	2%	2%	1%	2%	4%	4%

% Passing (Advanced + Proficient)

	<u>2005</u>	<u>2006</u>
Novato	68%	70%
Marin	74%	76%
California	54%	58%

**Mathematics Standards Performance Levels
Novato/Marin/California**

Grade 4



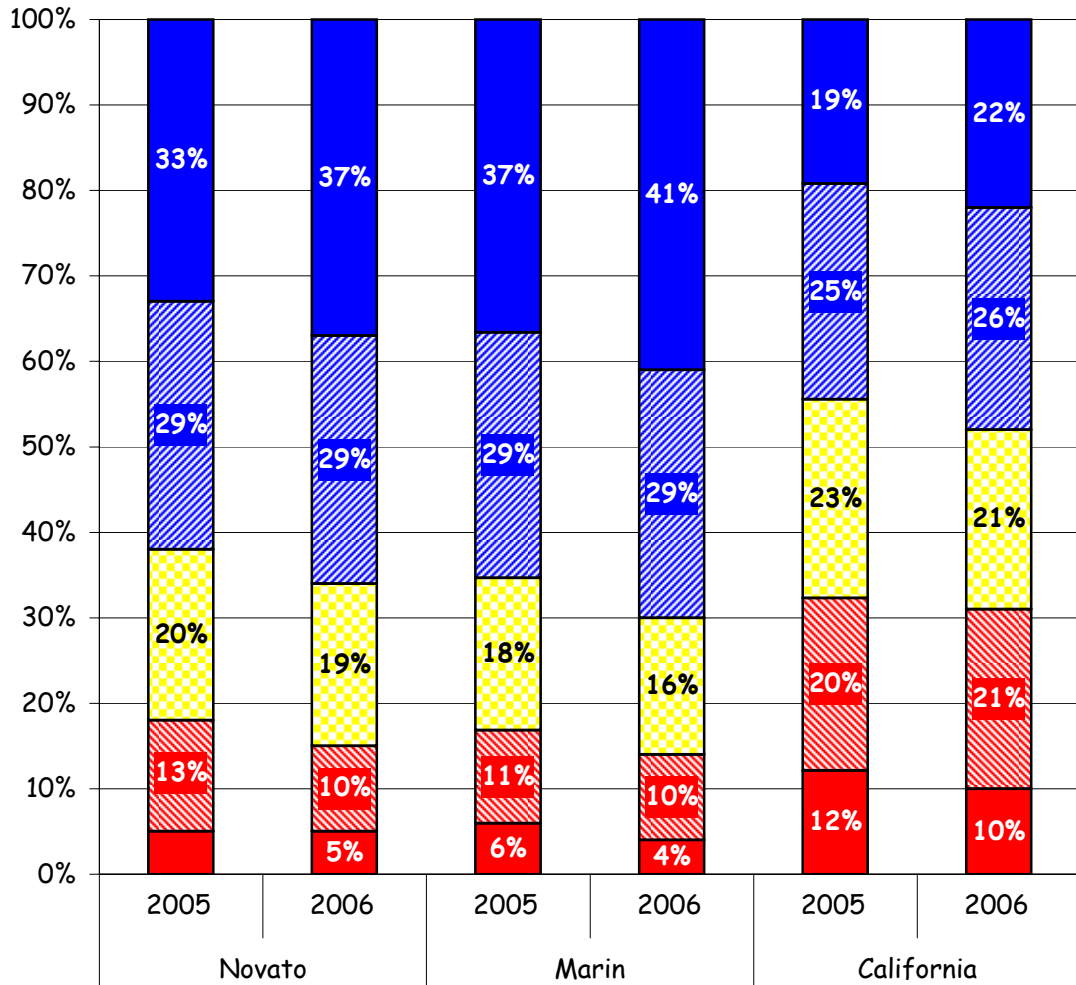
Advanced	49%	46%	47%	51%	26%	29%
Proficient	26%	25%	25%	25%	24%	25%
Basic	17%	16%	18%	14%	25%	24%
Below Basic	6%	11%	8%	8%	19%	18%
Far Below Basic	3%	2%	2%	2%	5%	4%

% Passing (Advanced + Proficient)

	<u>2005</u>	<u>2006</u>
Novato	75%	71%
Marin	72%	76%
California	50%	54%

**Mathematics Standards Performance Levels
Novato/Marin/California**

Grade 5



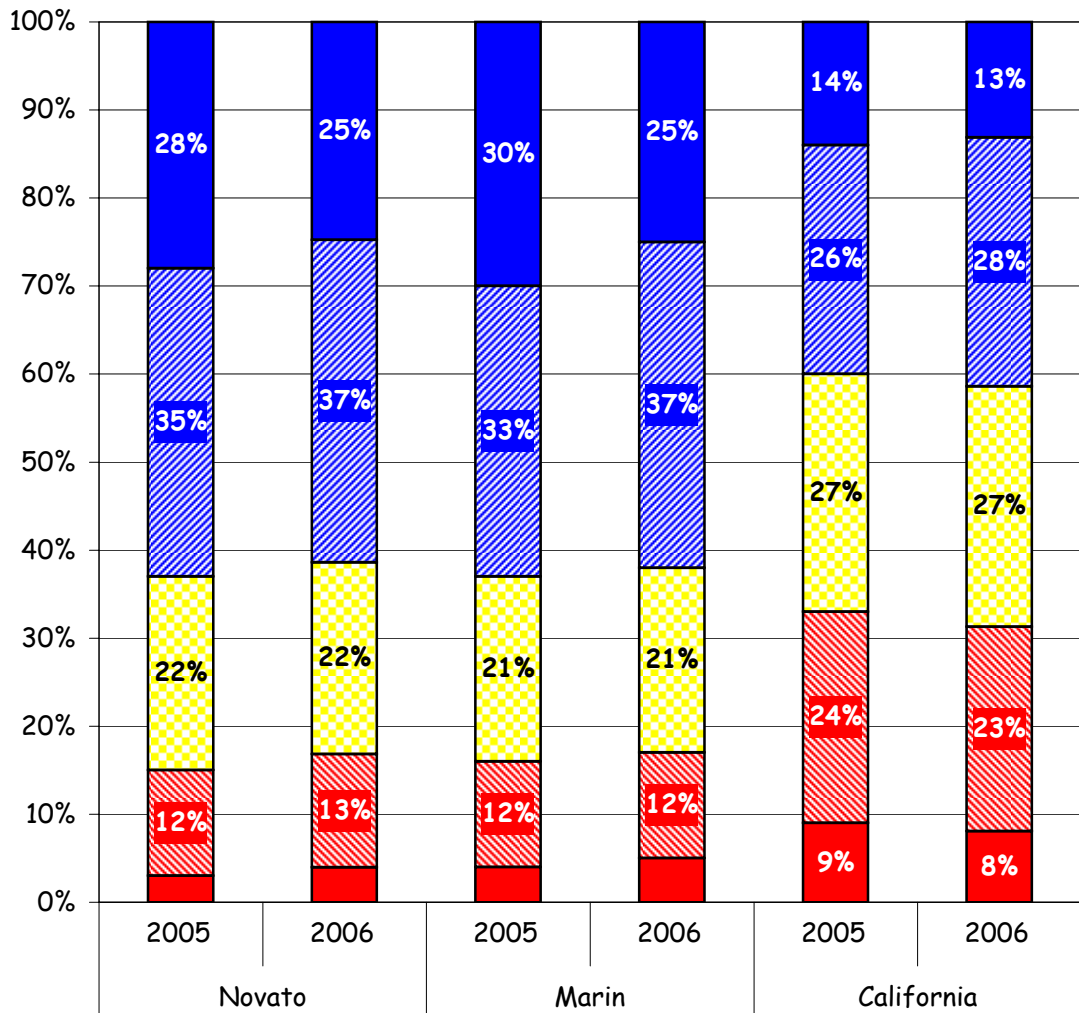
■ Advanced	33%	37%	37%	41%	19%	22%
▨ Proficient	29%	29%	29%	29%	25%	26%
▩ Basic	20%	19%	18%	16%	23%	21%
▨ Below Basic	13%	10%	11%	10%	20%	21%
■ Far Below Basic	5%	5%	6%	4%	12%	10%

% Passing (Advanced + Proficient)

	<u>2005</u>	<u>2006</u>
Novato	62%	66%
Marin	66%	70%
California	44%	48%

**Mathematics Standards Performance Levels
Novato/Marin/California**

Grade 6



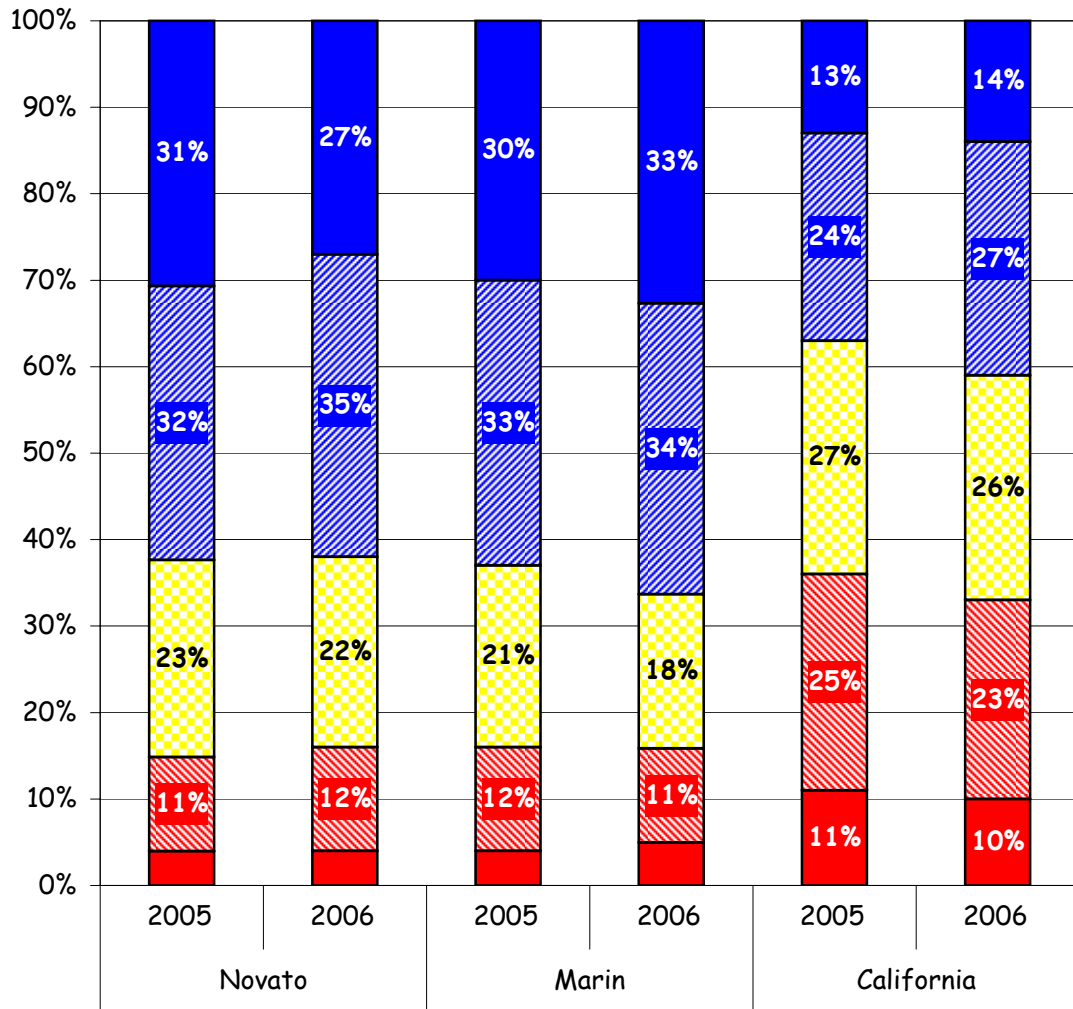
■ Advanced	28%	25%	30%	25%	14%	13%
▨ Proficient	35%	37%	33%	37%	26%	28%
▩ Basic	22%	22%	21%	21%	27%	27%
▨ Below Basic	12%	13%	12%	12%	24%	23%
■ Far Below Basic	3%	4%	4%	5%	9%	8%

% Passing (Advanced + Proficient)

	<u>2005</u>	<u>2006</u>
Novato	63%	62%
Marin	63%	62%
California	40%	41%

**Mathematics Standards Performance Levels
Novato/Marin/California**

Grade 7



Advanced	31%	27%	30%	33%	13%	14%
Proficient	32%	35%	33%	34%	24%	27%
Basic	23%	22%	21%	18%	27%	26%
Below Basic	11%	12%	12%	11%	25%	23%
Far Below Basic	4%	4%	4%	5%	11%	10%

% Passing (Advanced + Proficient)

	<u>2005</u>	<u>2006</u>
Novato	63%	62%
Marin	63%	67%
California	37%	41%