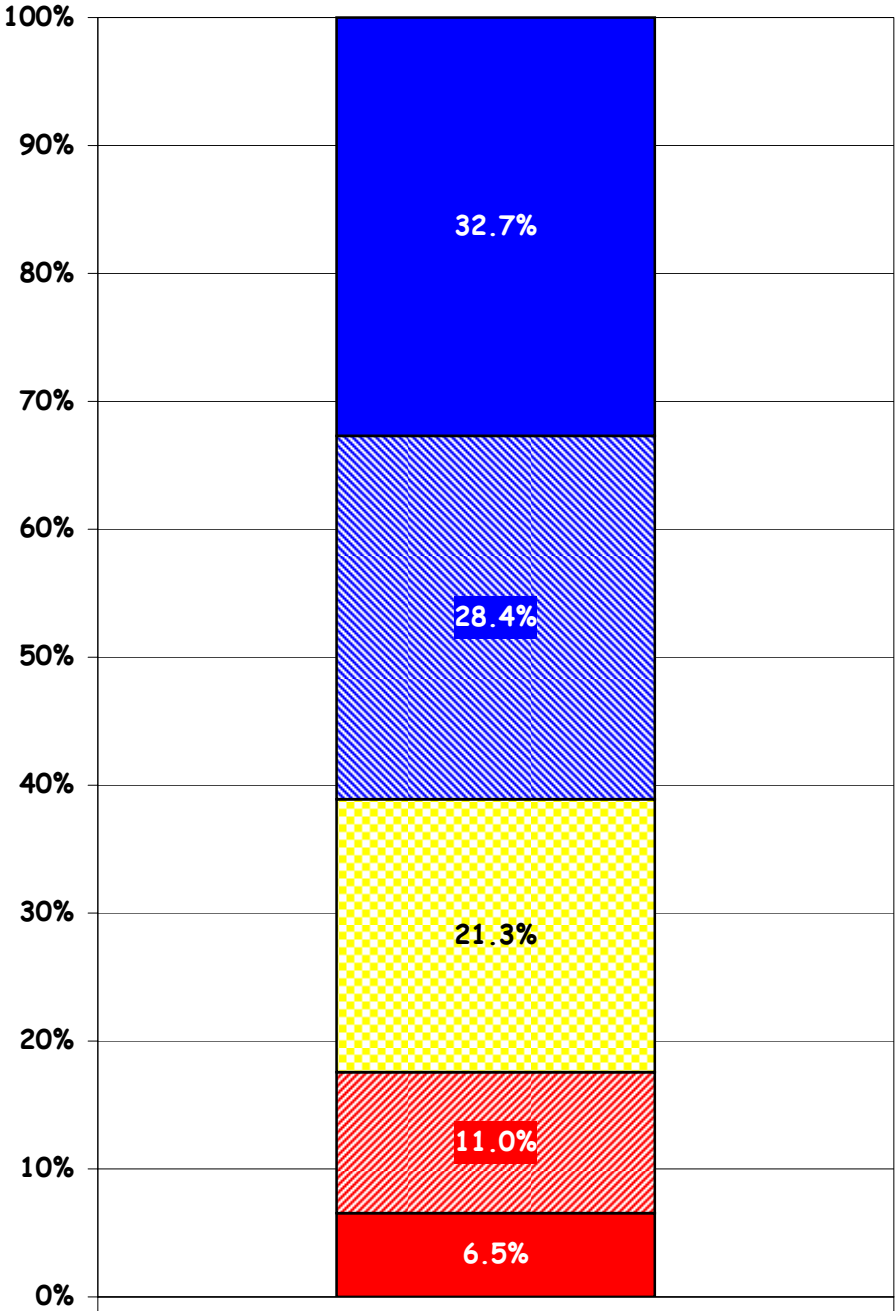


English/Language Arts Performance Standards
Districtwide/Matched Cohorts

Grade 2 - 2005-06



% Passing
Advanced &
Proficient

2006
61%

% Below
Below Basic +
Far Below Basic

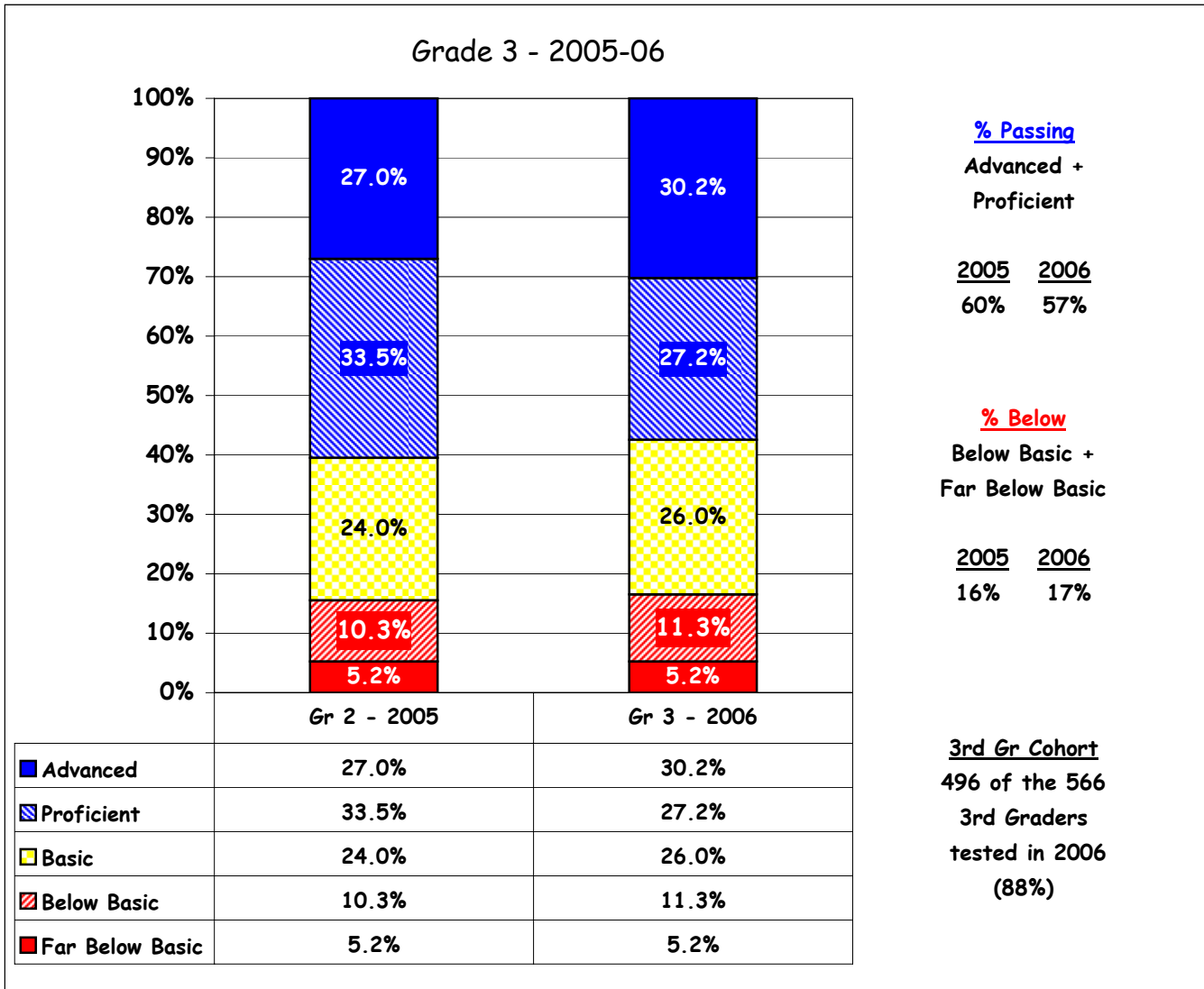
2006
18%

Gr 2 - 2006

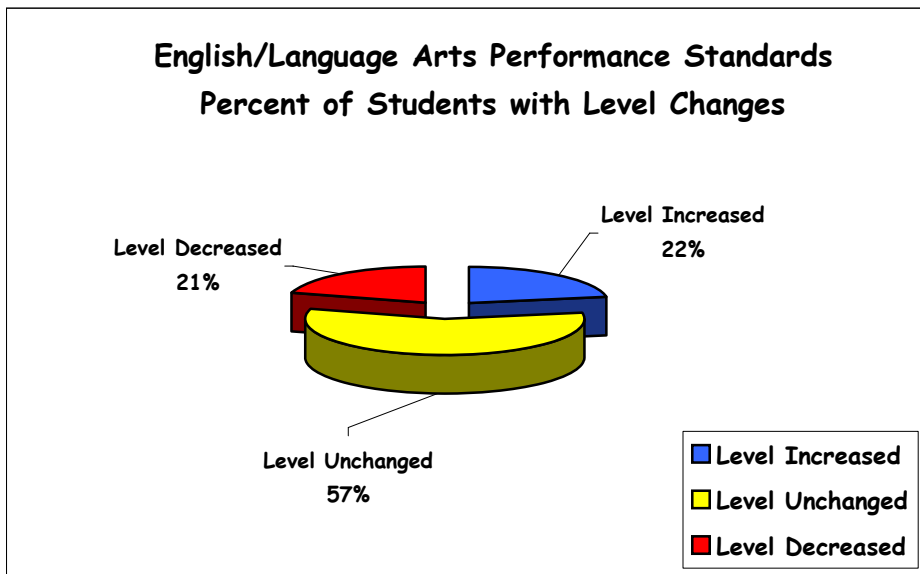
Advanced	32.7%
Proficient	28.4%
Basic	21.3%
Below Basic	11.0%
Far Below Basic	6.5%

2nd Gr
Valid Scores
550

English/Language Arts Performance Standards
Districtwide/Matched Cohorts



Please Note: These graphs do not include students tested with accommodations.

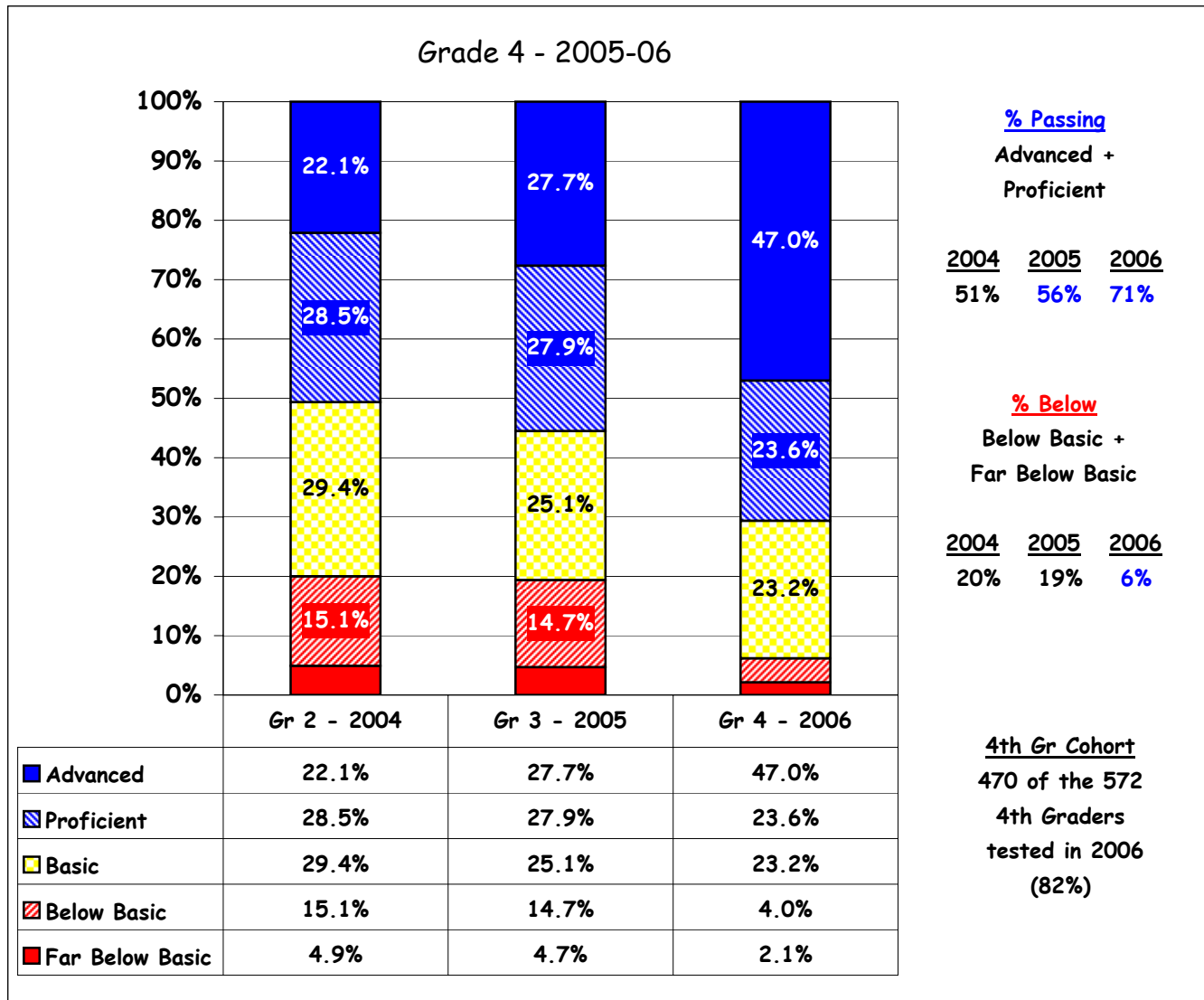


Please Note:

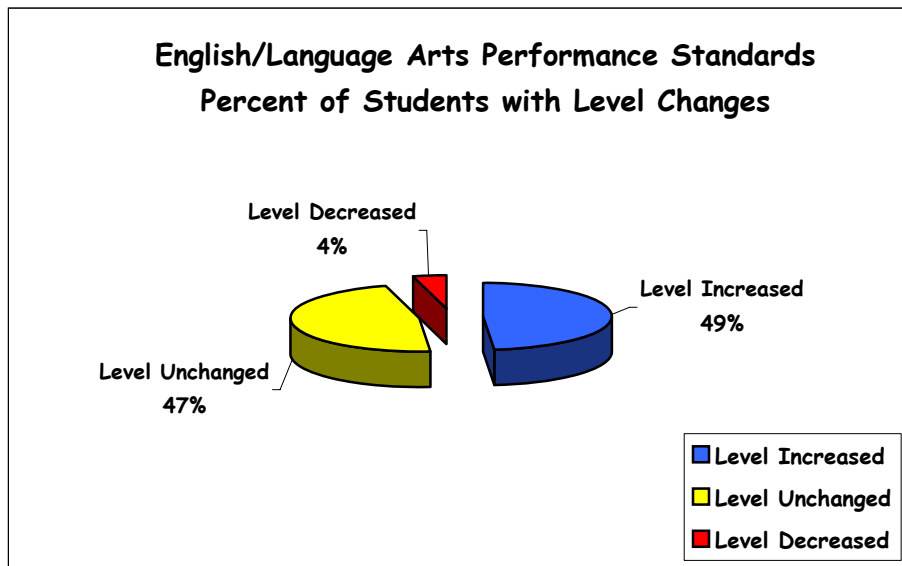
This graph includes only those students in the 3rd grade cohort who had a valid ELA Standards score in both 2005 and 2006.

Students = 496

English/Language Arts Performance Standards Districtwide/Matched Cohorts



Please Note: These graphs do not include students tested with accommodations.

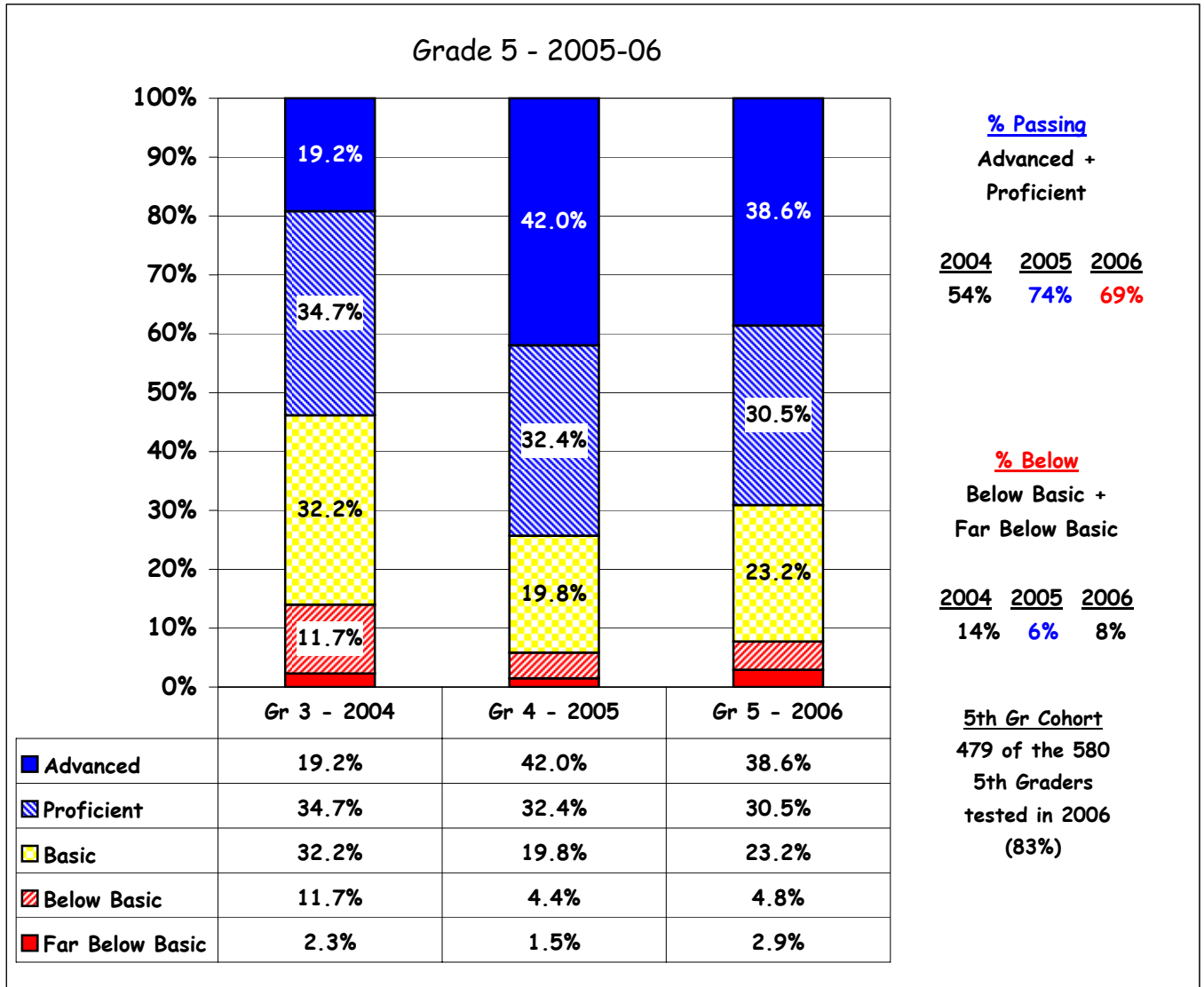


Please Note:

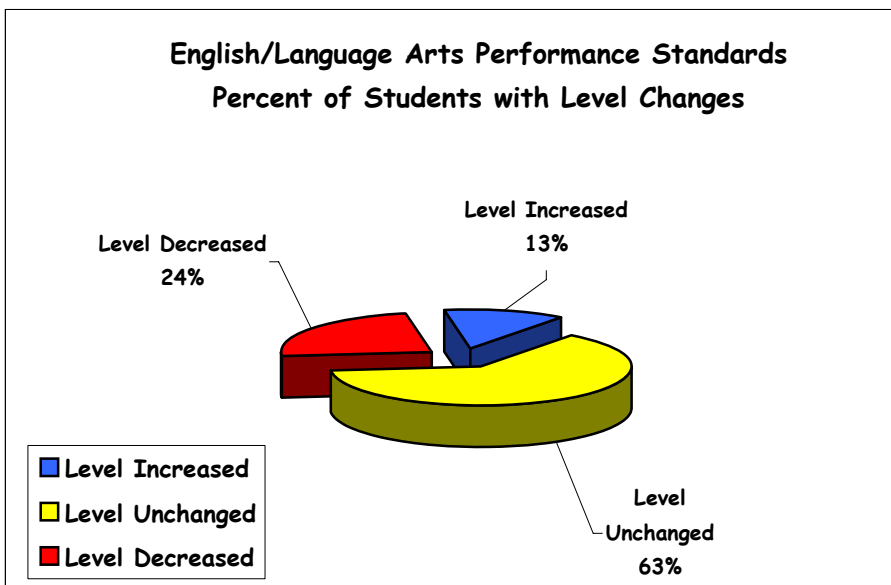
This graph includes only those students in the 4th grade cohort who had a valid ELA Standards score in 2004, 2005 and 2006.

Students = 470

English/Language Arts Performance Standards Districtwide/Matched Cohorts



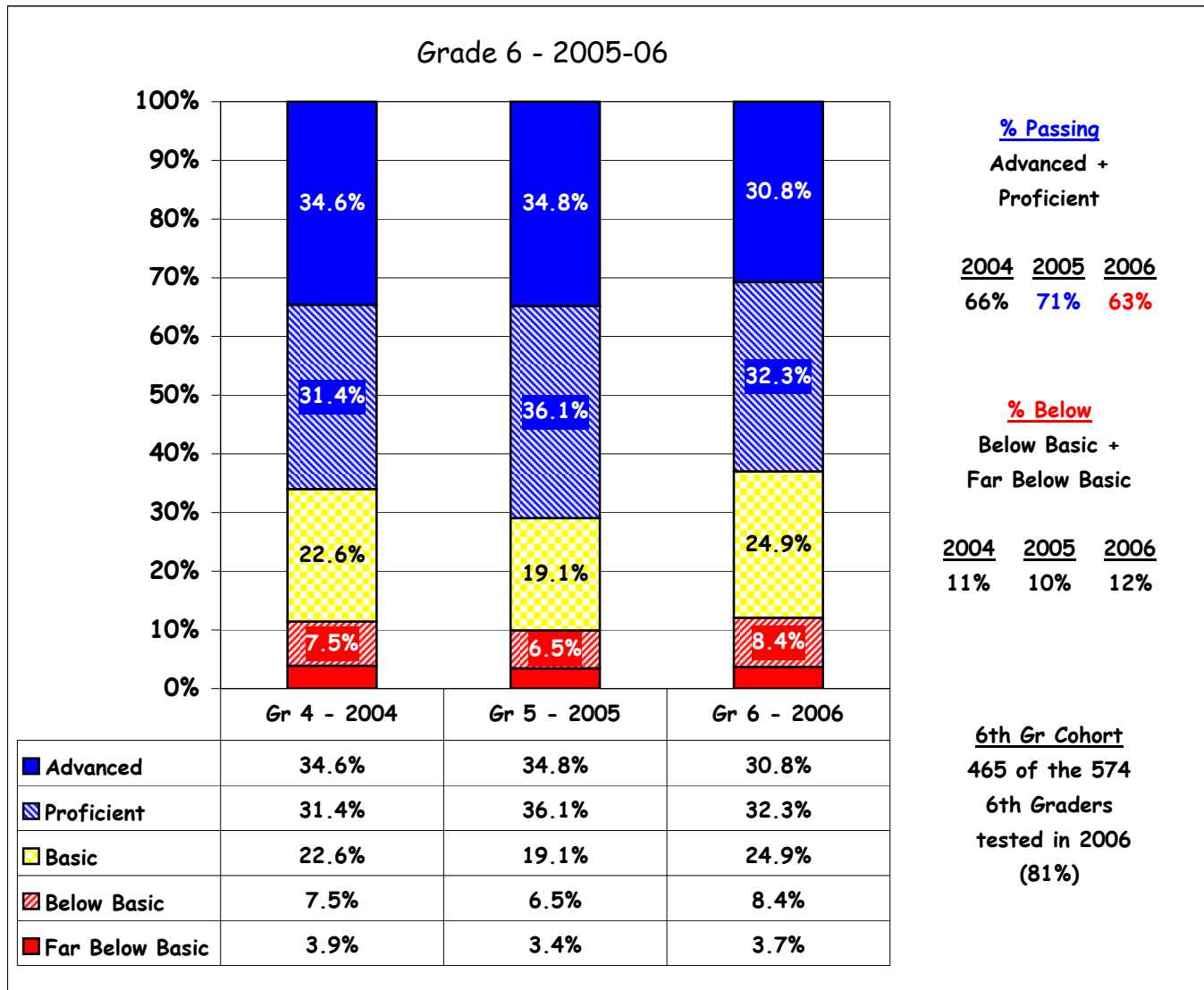
Please Note: These graphs do not include students tested with accommodations.



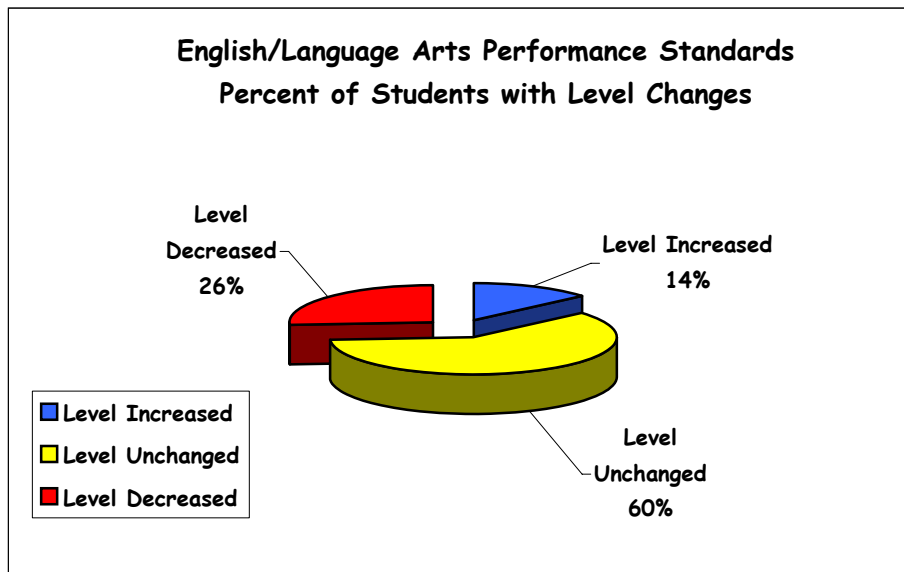
Please Note:

This graph includes only those students in the 5th grade cohort who had a valid ELA Standards score in 2004, 2005 and 2006.
Students = 479

English/Language Arts Performance Standards Districtwide/Matched Cohorts



Please Note: These graphs do not include students tested with accommodations.

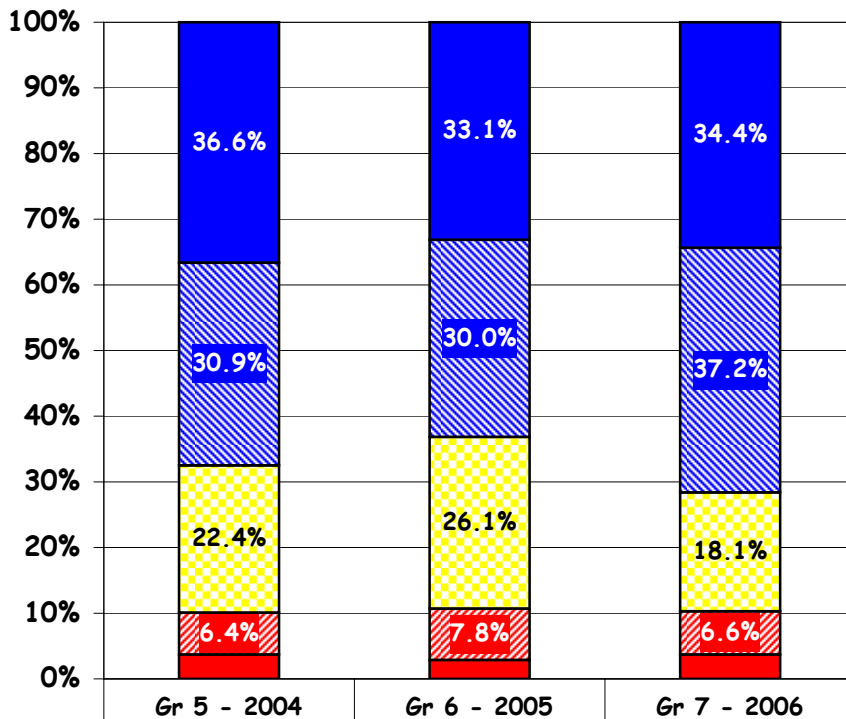


Please Note:

This graph includes only those students in the 6th grade cohort who had a valid ELA Standards score in 2004, 2005, and 2006.
Students = 465

English/Language Arts Performance Standards Districtwide/Matched Cohorts

Grade 7 - 2005-06



% Passing

Advanced +
Proficient

<u>2004</u>	<u>2005</u>	<u>2006</u>
67%	63%	72%

% Below

Below Basic +
Far Below Basic

<u>2004</u>	<u>2005</u>	<u>2006</u>
10%	11%	10%

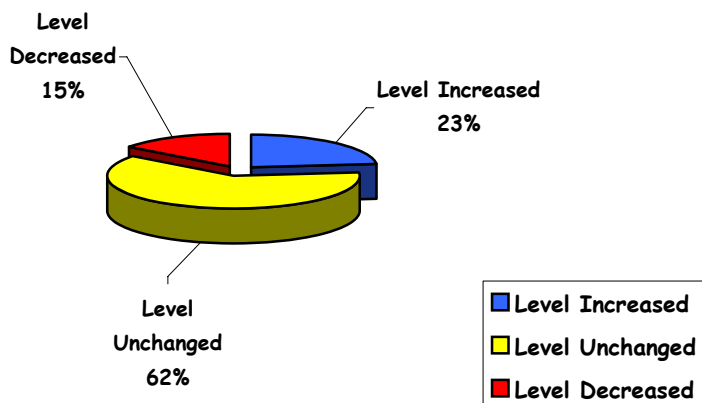
Advanced	36.6%	33.1%	34.4%
Proficient	30.9%	30.0%	37.2%
Basic	22.4%	26.1%	18.1%
Below Basic	6.4%	7.8%	6.6%
Far Below Basic	3.7%	2.9%	3.7%

7th Gr Cohort

486 of the 606
7th Graders
tested in 2006
(80%)

Please Note: These graphs do not include students tested with accommodations.

English/Language Arts Performance Standards Percent of Students with Level Changes



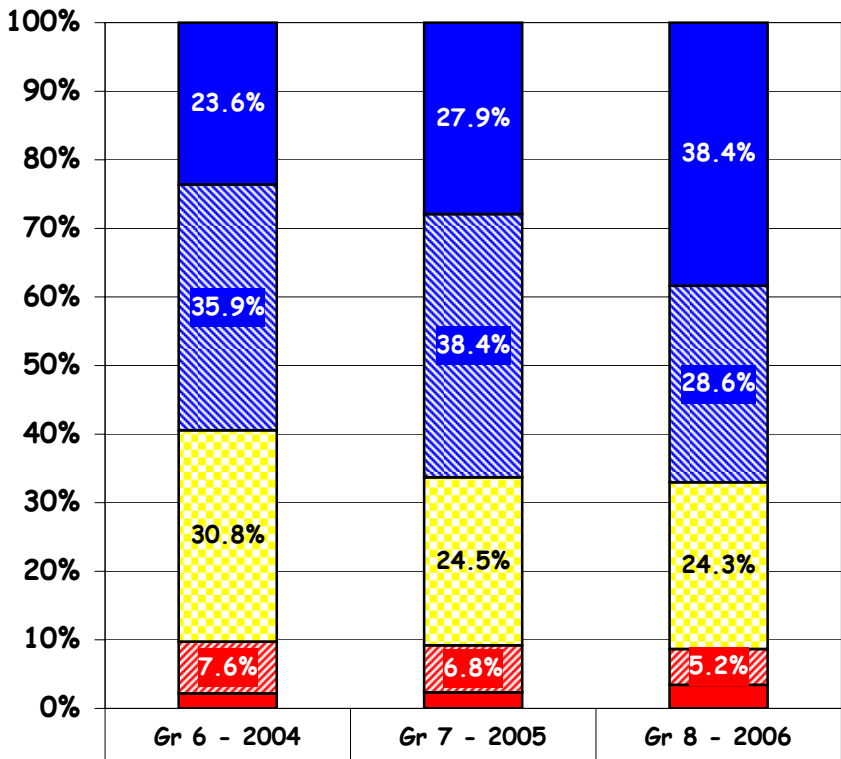
Please Note:

This graph includes only those students in the 7th grade cohort who had a valid ELA Standards score in 2004, 2005, and 2006.

Students = 486

English/Language Arts Performance Standards
Districtwide/Matched Cohorts

Grade 8 - 2005-06



% Passing

Advanced +
Proficient

2004	2005	2006
59%	66%	67%

% Below

Below Basic +
Far Below Basic

2004	2005	2006
10%	9%	9%

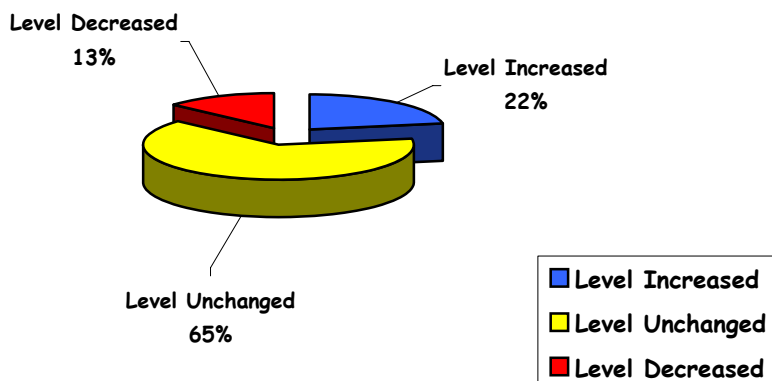
8th Gr Cohort

555 of the 650
8th Graders
tested in 2006
(85%)

■ Advanced	23.6%	27.9%	38.4%
▨ Proficient	35.9%	38.4%	28.6%
■ Basic	30.8%	24.5%	24.3%
▨ Below Basic	7.6%	6.8%	5.2%
■ Far Below Basic	2.2%	2.3%	3.4%

Please Note: These graphs do not include students tested with accommodations.

**English/Language Arts Performance Standards
Percent of Students with Level Changes**

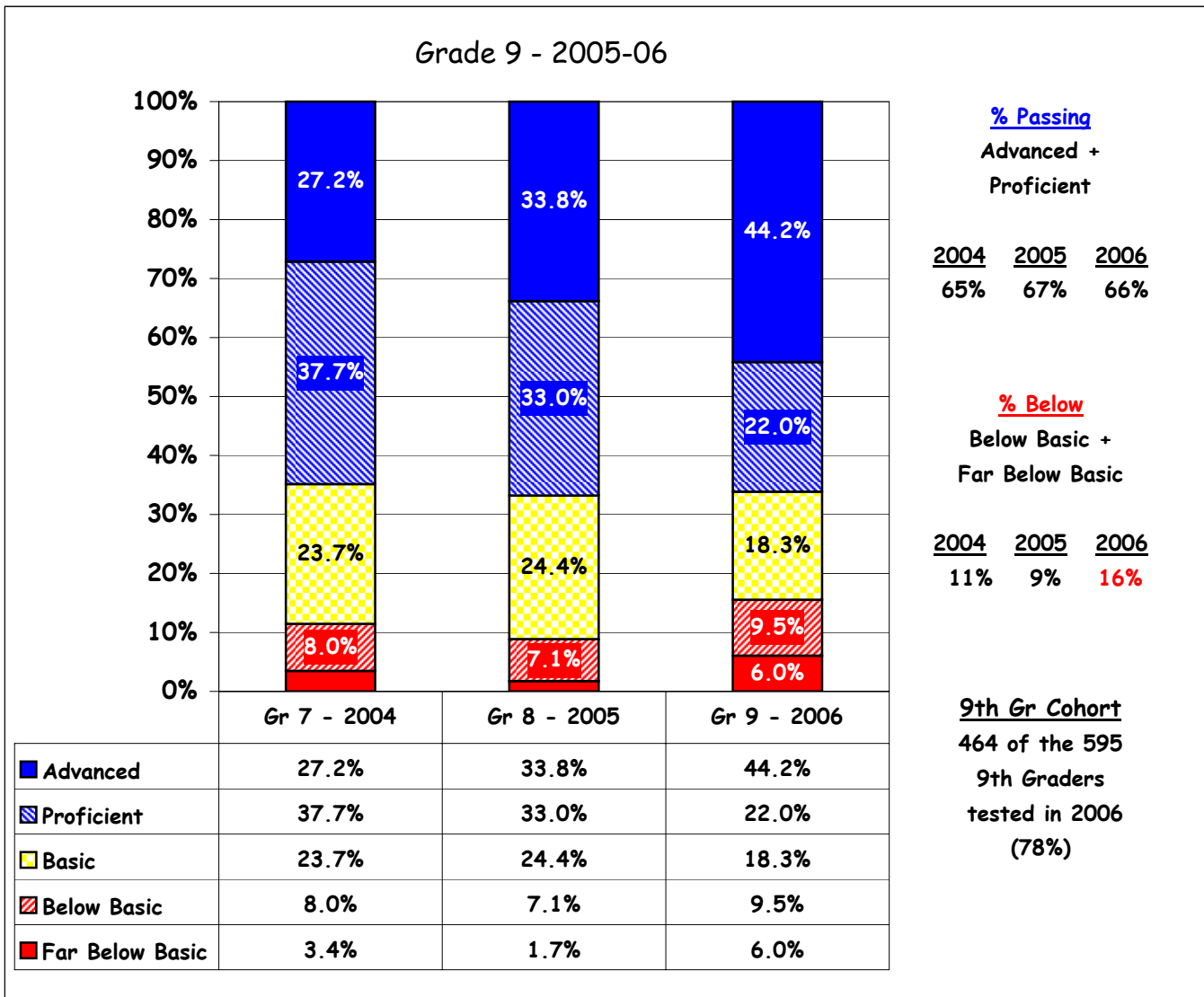


Please Note:

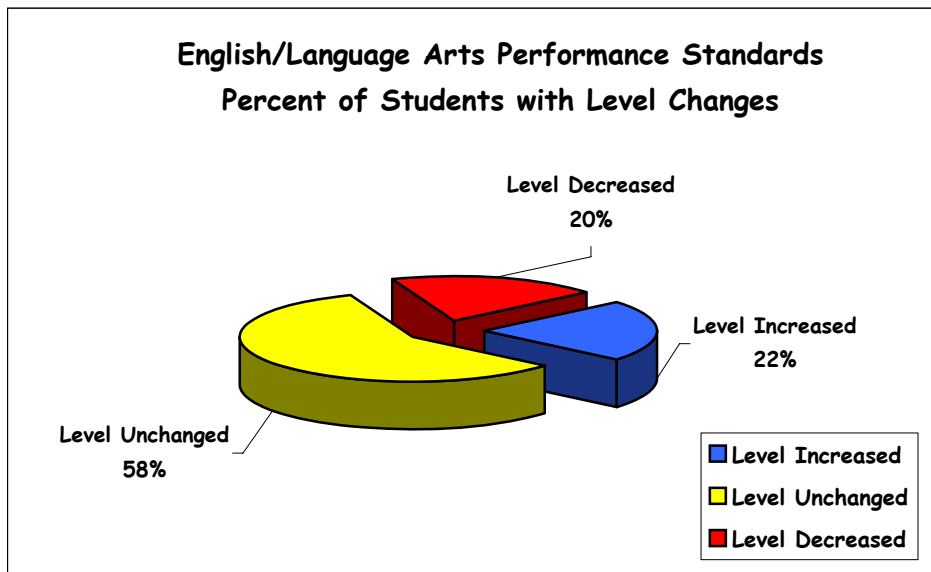
This graph includes only those students in the 8th grade cohort who had a valid ELA Standards score in 2004, 2005 and 2006

Students = 555

English/Language Arts Performance Standards Districtwide/Matched Cohorts



Please Note: These graphs do not include students tested with accommodations.



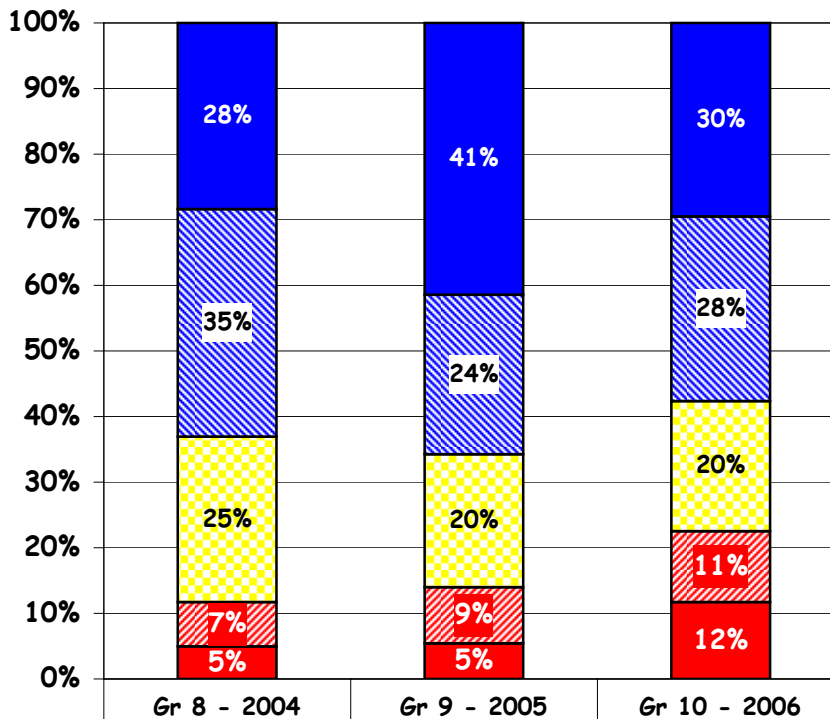
Please Note:

This graph includes only those students in the 9th grade cohort who had a valid ELA Standards score in 2004, 2005, and 2006.

Students = 464

English/Language Arts Performance Standards
Districtwide/Matched Cohorts

Grade 10 - 2005-06



% Passing

Advanced +
Proficient

2004	2005	2006
63%	66%	58%

% Below

Below Basic +
Far Below Basic

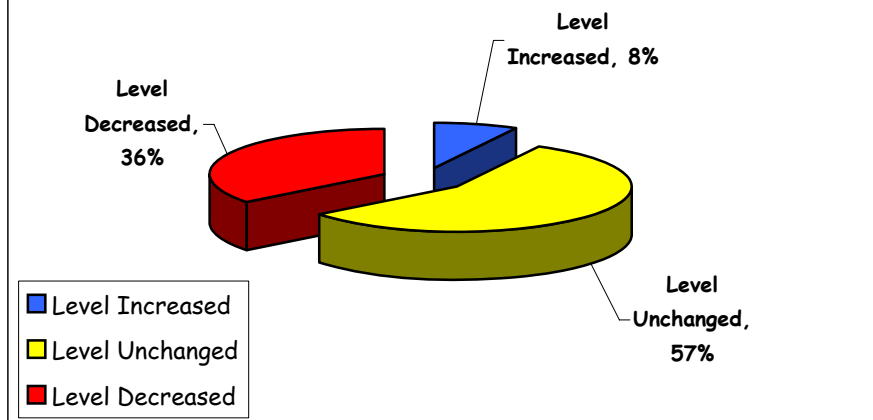
2004	2005	2006
12%	14%	23%

■ Advanced	28%	41%	30%
▨ Proficient	35%	24%	28%
■ Basic	25%	20%	20%
▨ Below Basic	7%	9%	11%
■ Far Below Basic	5%	5%	12%

10th Gr Cohort
444 of the 593
10th Graders
tested in 2006
(75%)

Please Note: These graphs do not include students tested with accommodations.

English/Language Arts Performance Standards
Percent of Students with Level Changes



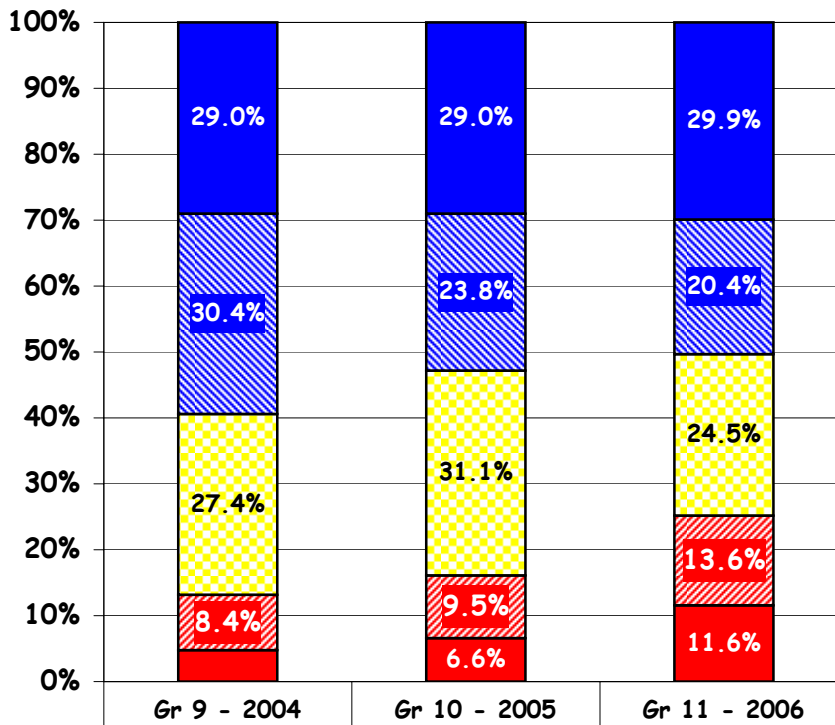
Please Note:

This graph includes only those students in the 10th grade cohort who had a valid ELA Standards score in 2004, 2005, and 2006

Students = 444

English/Language Arts Performance Standards
Districtwide/Matched Cohorts

Grade 11 - 2005-06



% Passing
Advanced +
Proficient

<u>2004</u>	<u>2005</u>	<u>2006</u>
59%	53%	50%

% Below
Below Basic +
Far Below Basic

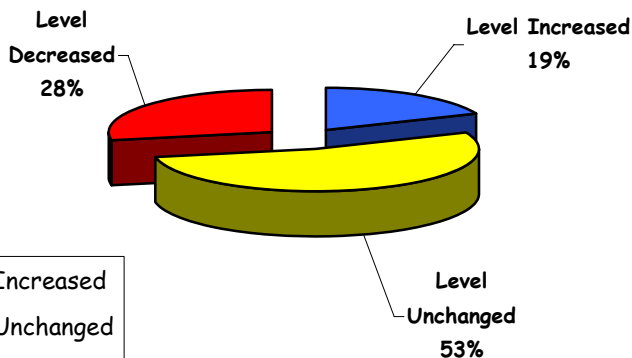
<u>2004</u>	<u>2005</u>	<u>2006</u>
13%	16%	25%

■ Advanced	29.0%	29.0%	29.9%
▨ Proficient	30.4%	23.8%	20.4%
■ Basic	27.4%	31.1%	24.5%
▨ Below Basic	8.4%	9.5%	13.6%
■ Far Below Basic	4.8%	6.6%	11.6%

11th Gr Cohort
441 of the 552
11th Graders
tested in 2006
(80%)

Please Note: These graphs do not include students tested with accommodations.

English/Language Arts Performance Standards
Percent of Students with Level Changes



Please Note:

This graph includes only those students in the 11th grade cohort who had a valid ELA Standards score in 2004, 2005, and 2006.

Students = 441