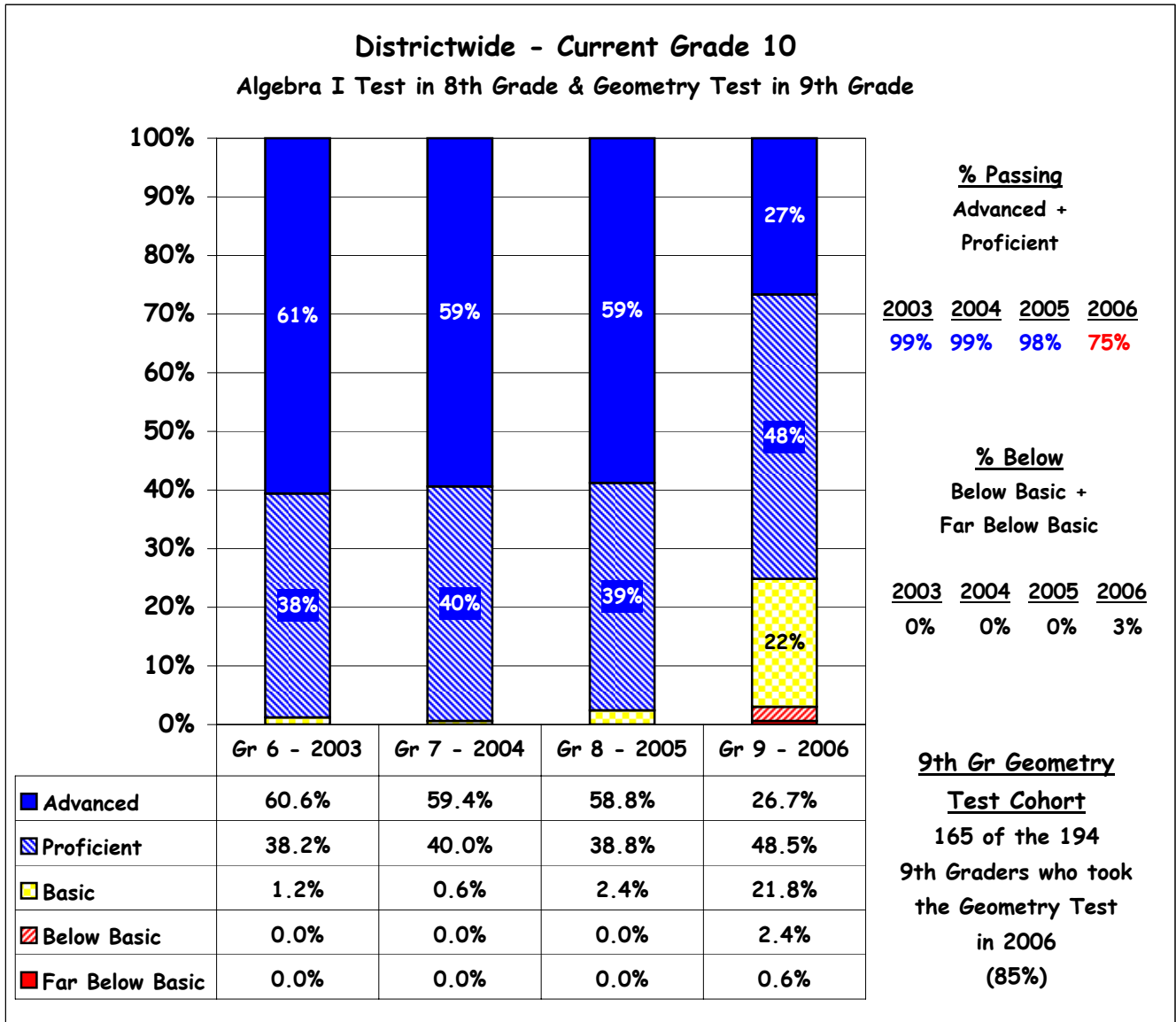
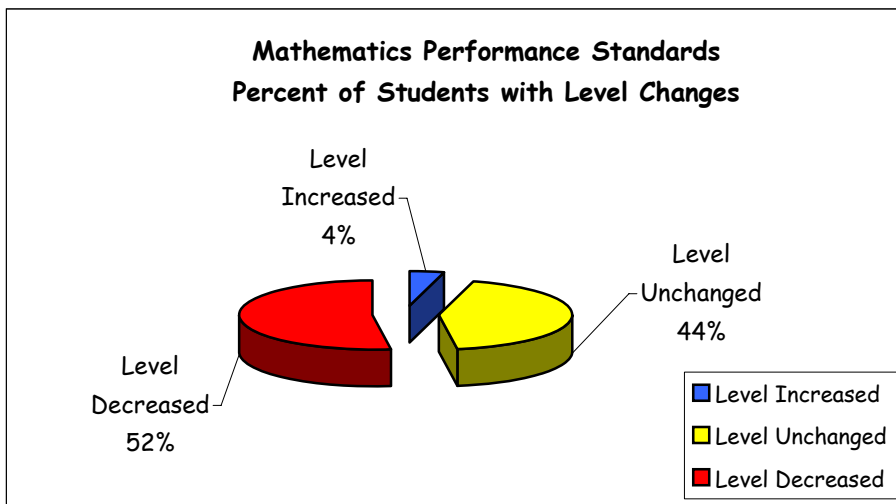


## Mathematics Performance Standards Districtwide/Matched Cohort



Please Note: This graph does not include results for students with testing accommodations.

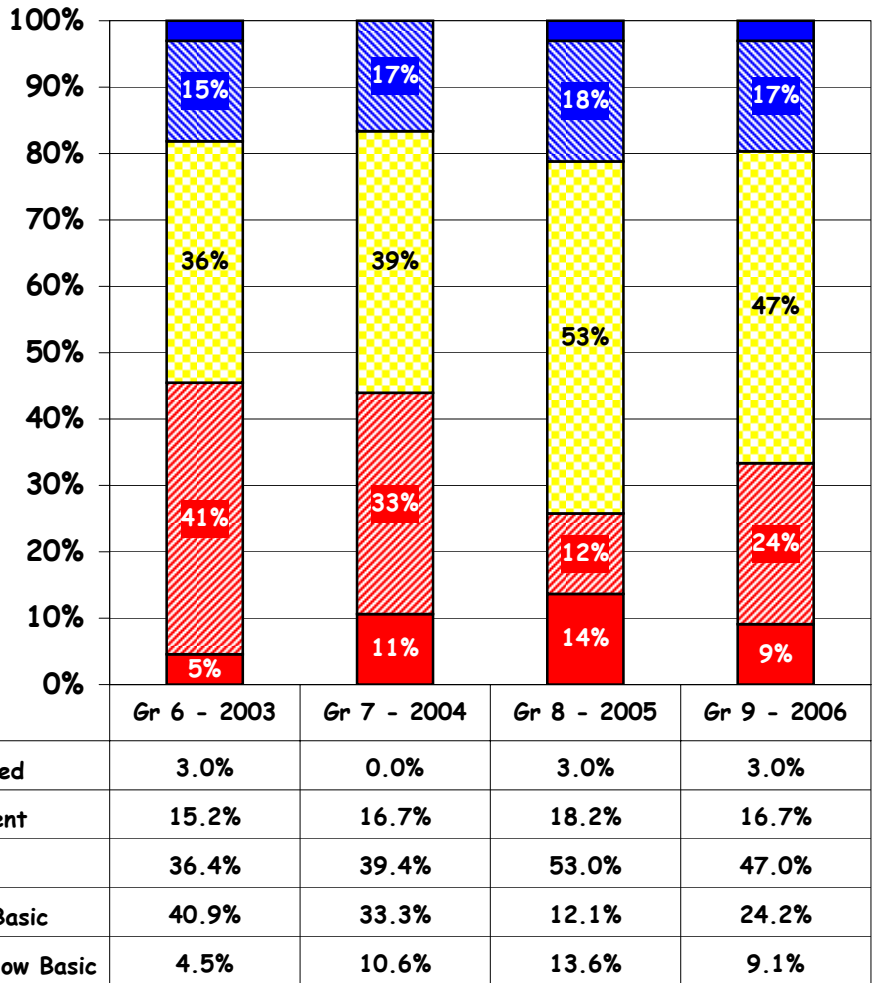


Please Note:

This graph includes only those students in the 9th grade cohort who took the Geometry Test in 2006 and had a valid Math Standards score in 2003, 2004, 2005 and 2006.  
# Students = 165

**Mathematics Performance Standards  
Districtwide/Matched Cohort**

**Districtwide - Current Grade 10  
General Math Test in 8th & 9th Grade - Spring 2006**



**% Passing  
Advanced +  
Proficient**

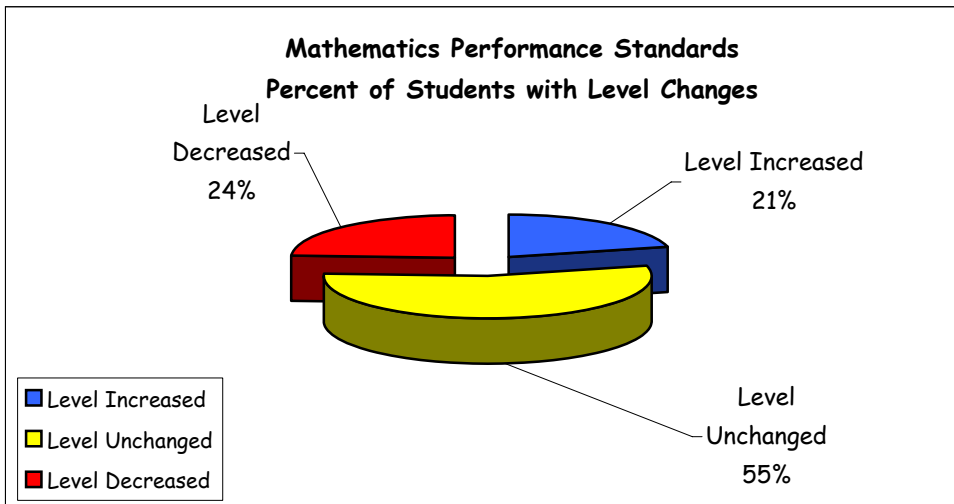
2003	2004	2005	2006
18%	17%	21%	20%

**% Below  
Below Basic +  
Far Below Basic**

2003	2004	2005	2006
45%	44%	26%	33%

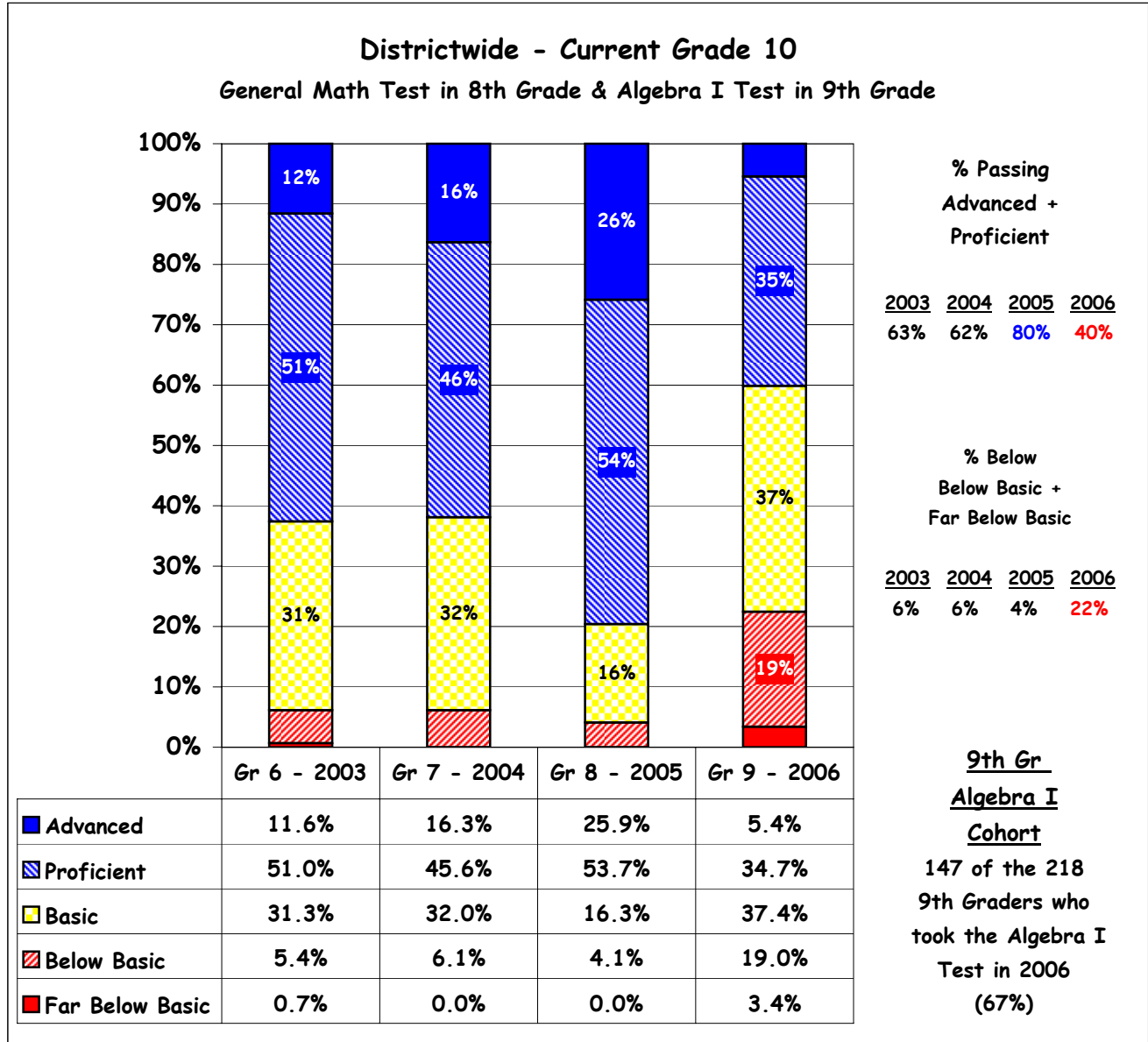
**9th Gr  
General Math  
Cohort**  
66 of the 157  
9th Graders  
who took the  
General Math  
Test in 2006  
(42%)

Please Note: This graph does not include results for students with testing accommodations.

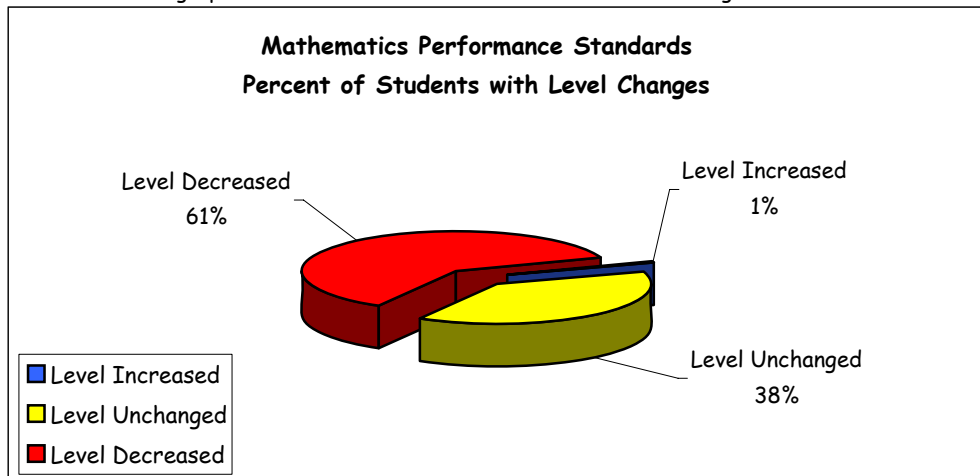


Please Note:  
This graph includes only those students in the 9th grade cohort who took the General Math Test in 2006 and had a valid Math Standards score in 2003, 2004, 2005 and 2006  
# Students = 66

**Mathematics Performance Standards  
Districtwide/Matched Cohort**

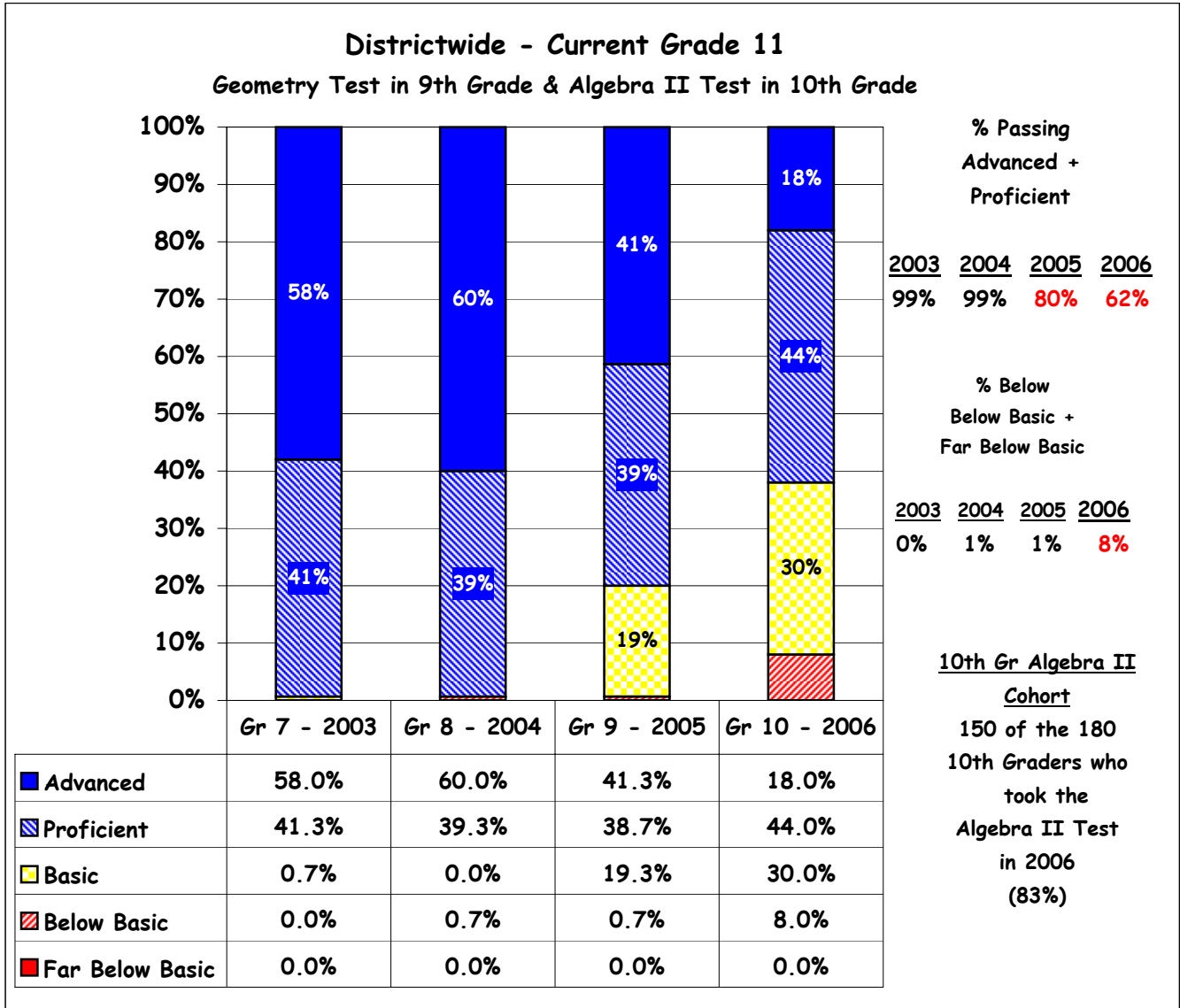


Please Note: This graph does not include results for students with testing accommodations.

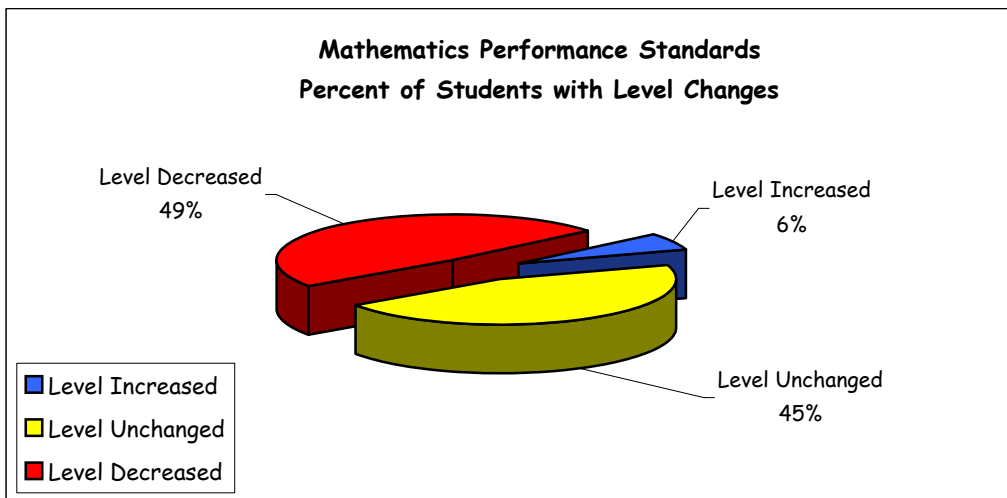


Please Note:  
This graph includes only those students in the 9th grade cohort who took the Algebra I Test in 2006 and had a valid Math Standards score in 2003, 2004, 2005 and 2006.  
# Students = 147

## Mathematics Performance Standards Districtwide/Matched Cohort

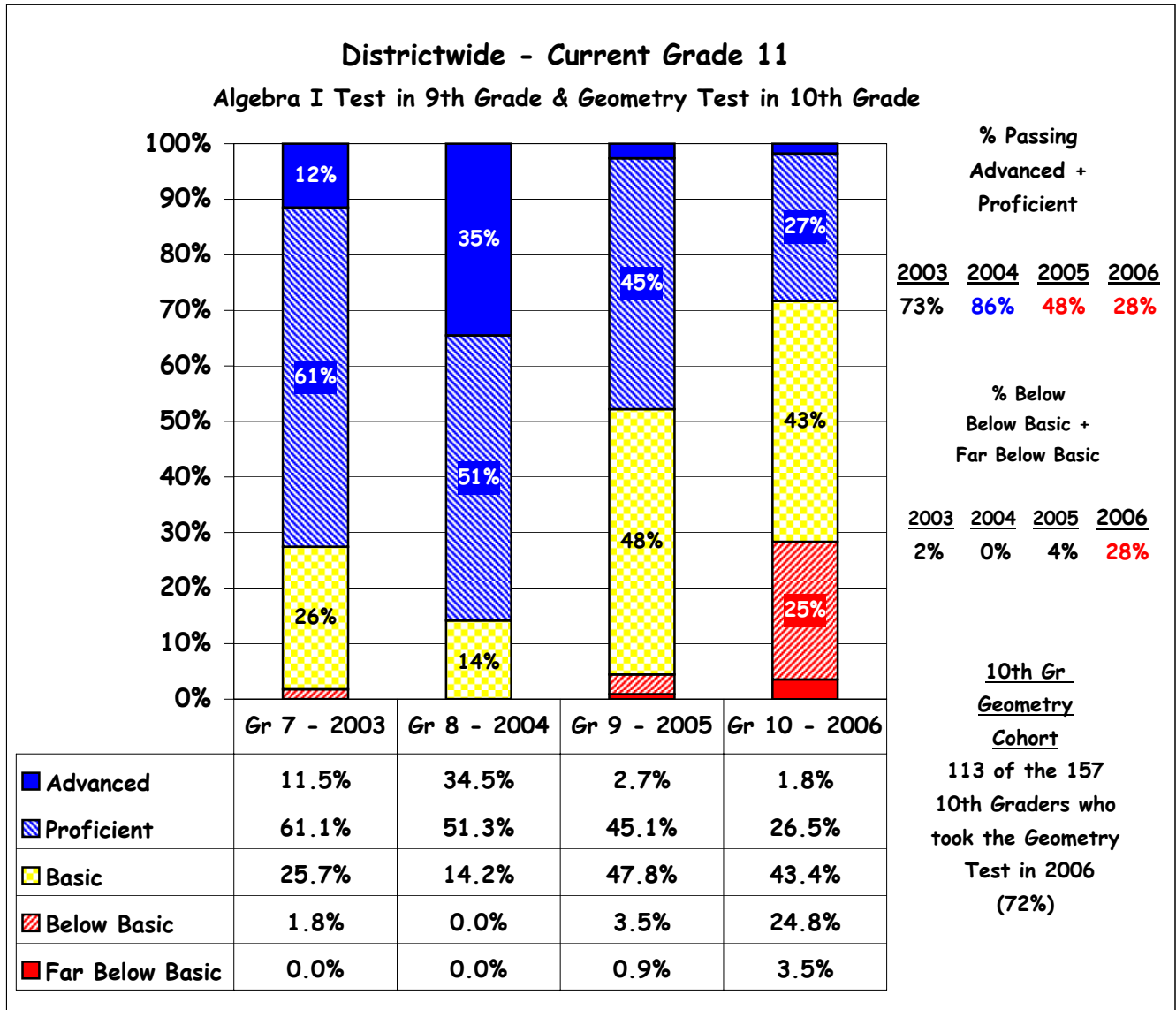


Please Note: This graph does not include results for students with testing accommodations.

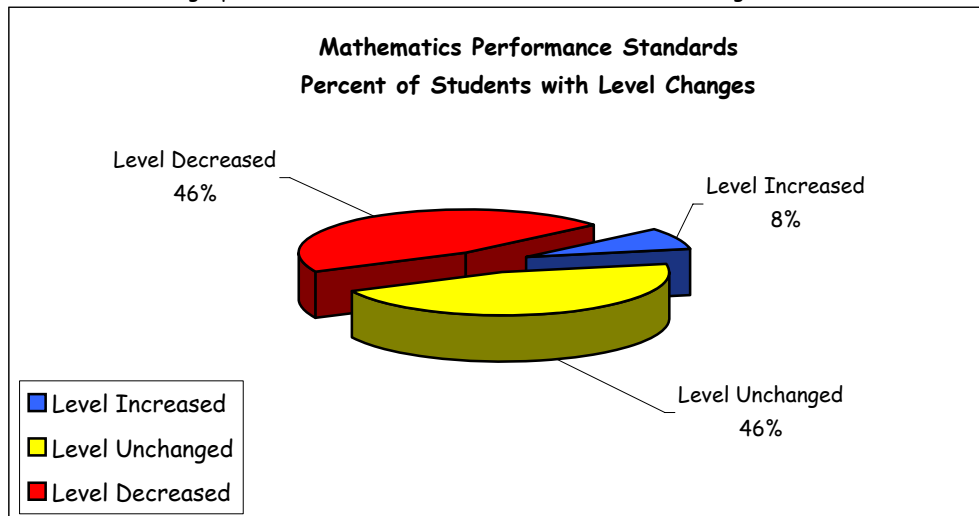


Please Note:  
This graph includes only those students in the 10th grade cohort who took the Algebra II Test in 2006 and had a valid Math Standards score in 2003, 2004, 2005, and 2006.  
# Students = 150

## Mathematics Performance Standards Districtwide/Matched Cohort

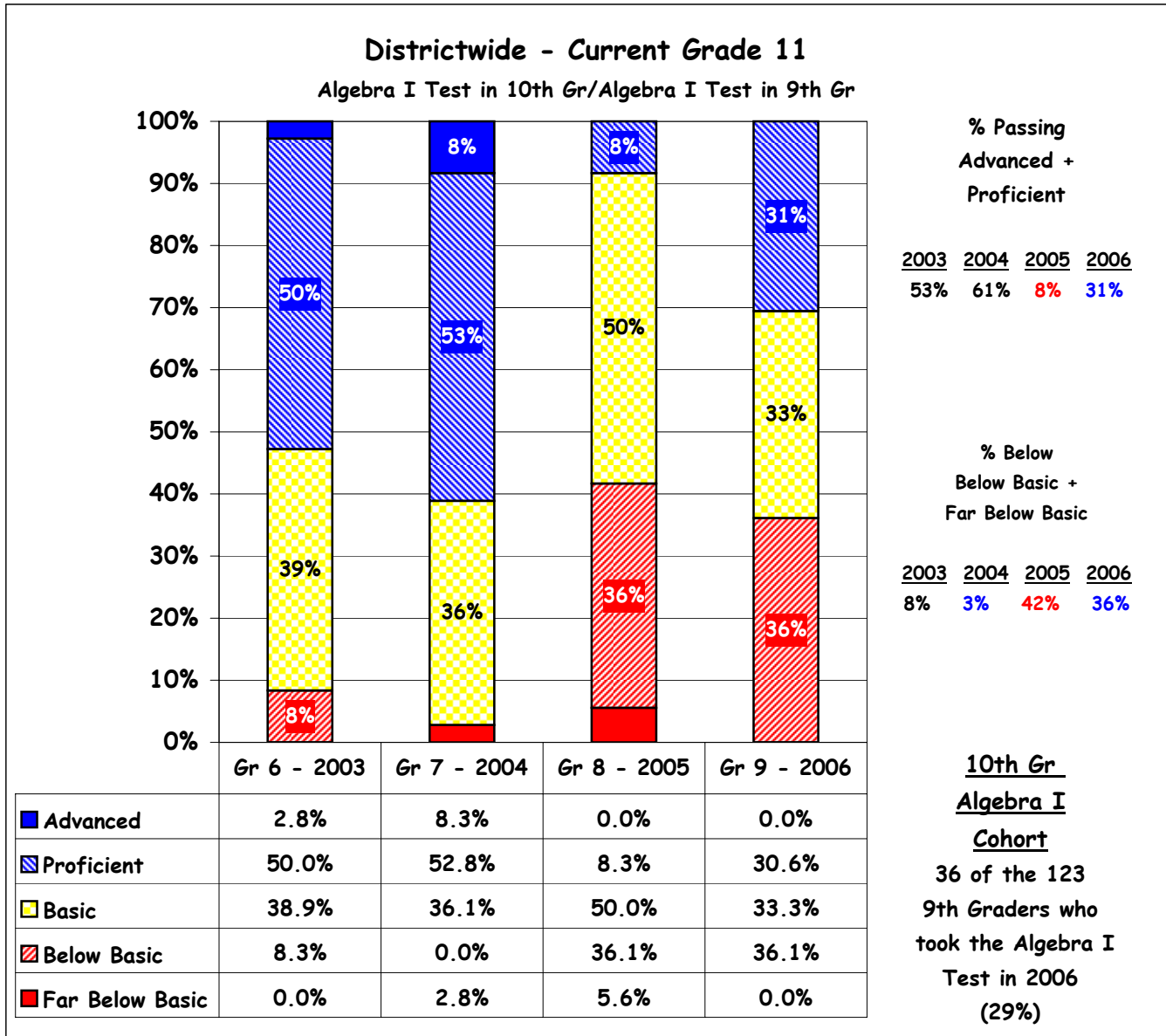


Please Note: This graph does not include results for students with testing accommodations.

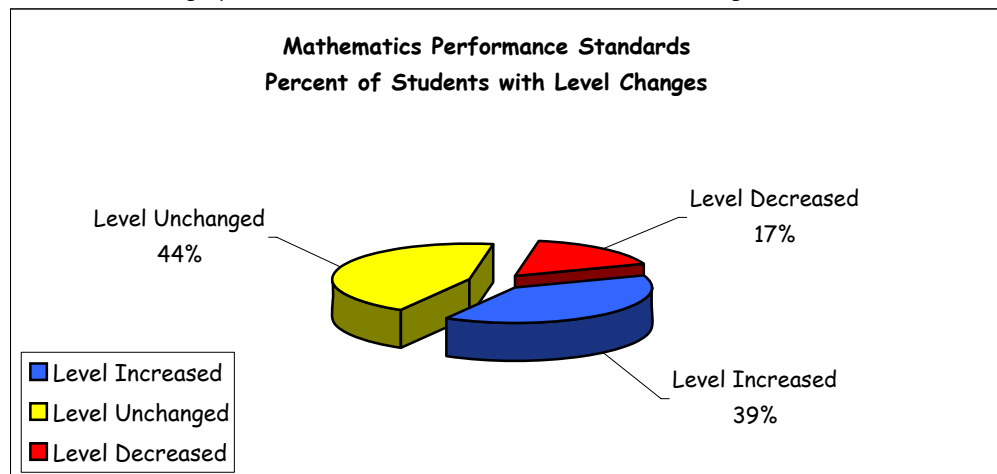


Please Note:  
This graph includes only those students in the 10th grade cohort who took the Geometry Test in 2006 and had a valid Math Standards score in 2003, 2004, 2005, and 2006.  
# Students = 113

## Mathematics Performance Standards Districtwide/Matched Cohort



Please Note: This graph does not include results for students with testing accommodations.



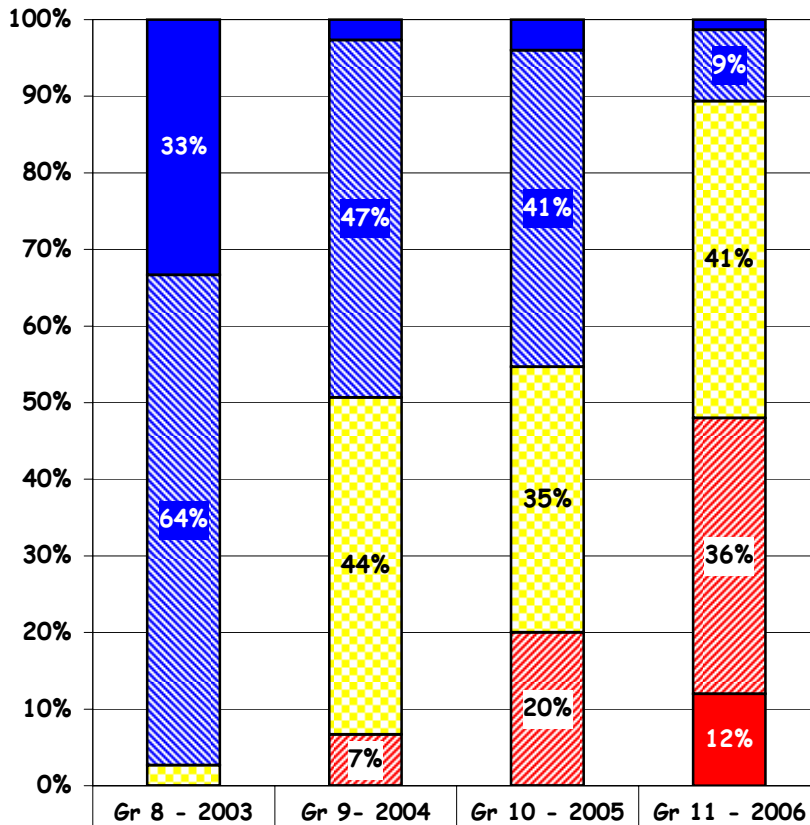
Please Note:

This graph includes only those students in the 10th grade cohort who took the Algebra I Test in 2006 and the Algebra I Test in 2005 and had a valid Math Standards score in 2003, 2004, 2005 and 2006.

# Students = 36

**Mathematics Performance Standards  
Districtwide/Matched Cohort**

**Districtwide - Current Grade 12  
Algebra II Test in 11th Grade - Spring 2006**



**% Passing  
Advanced +  
Proficient**

2003	2004	2005	2006
97%	49%	45%	11%

**% Below  
Below Basic +  
Far Below Basic**

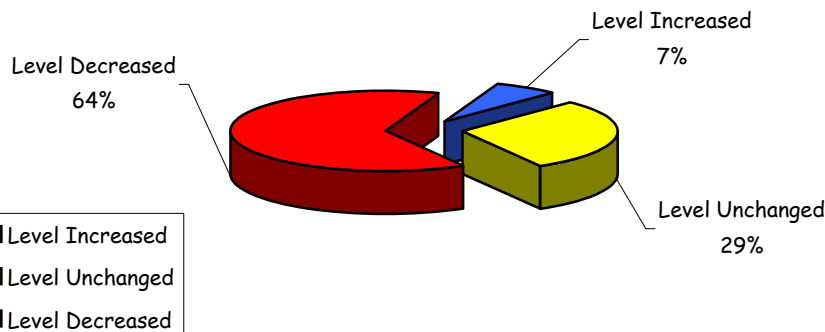
2003	2004	2005	2006
0%	7%	20%	48%

**11th Gr  
Algebra II  
Cohort**  
75 of the 104  
11th Graders  
who took the  
Algebra II Tes  
in 2006  
(72%)

	Gr 8 - 2003	Gr 9 - 2004	Gr 10 - 2005	Gr 11 - 2006
Advanced	33.3%	2.7%	4.0%	1.3%
Proficient	64.0%	46.7%	41.3%	9.3%
Basic	2.7%	44.0%	34.7%	41.3%
Below Basic	0.0%	6.7%	20.0%	36.0%
Far Below Basic	0.0%	0.0%	0.0%	12.0%

Please Note: This graph does not include results for students with testing accommodations.

**Mathematics Performance Standards  
Percent of Students with Level Changes**

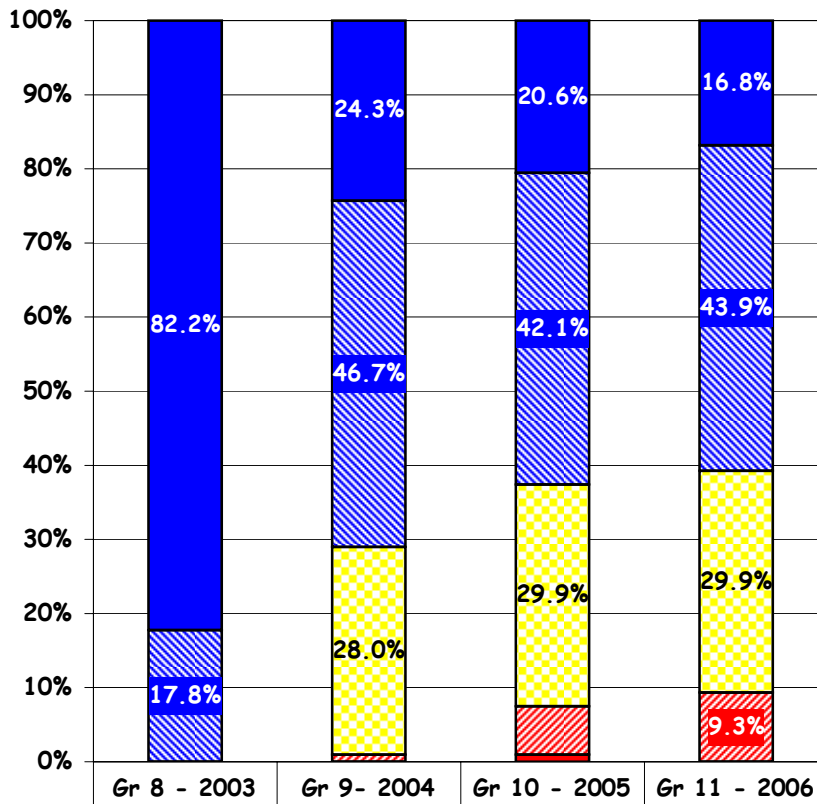


Please Note:

This graph includes only those students in the 11th grade cohort who took the Algebra II Test in 2006 and had a valid Math Standards score in 2003, 2004, 2005 and 2006.  
# Students = 75

**Mathematics Performance Standards  
Districtwide/Matched Cohort**

**Districtwide - Current Grade 12  
High School Summative Math Test in 11th Grade - Spring 2006**



**% Passing  
Advanced +  
Proficient**

2003	2004	2005	2006
100%	71%	63%	61%

**% Below  
Below Basic +  
Far Below Basic**

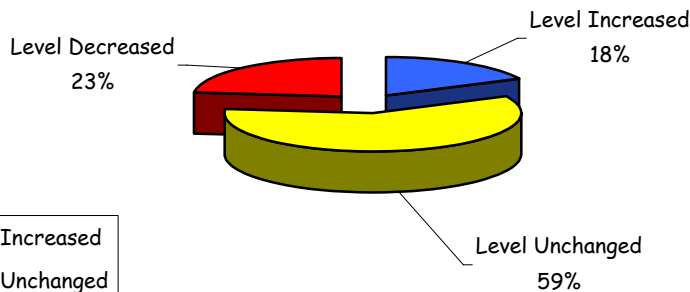
2003	2004	2005	2006
0%	1%	7%	9%

**11th Gr  
Summative Math  
Test Cohort**  
107 of the 134  
11th Graders  
who took the  
HS Summative  
Math Test in 2006  
(80%)

	Gr 8 - 2003	Gr 9 - 2004	Gr 10 - 2005	Gr 11 - 2006
Advanced	82.2%	24.3%	20.6%	16.8%
Proficient	17.8%	46.7%	42.1%	43.9%
Basic	0.0%	28.0%	29.9%	29.9%
Below Basic	0.0%	0.9%	6.5%	9.3%
Far Below Basic	0.0%	0.0%	0.9%	0.0%

Please Note: This graph does not include results for students with testing accommodations.

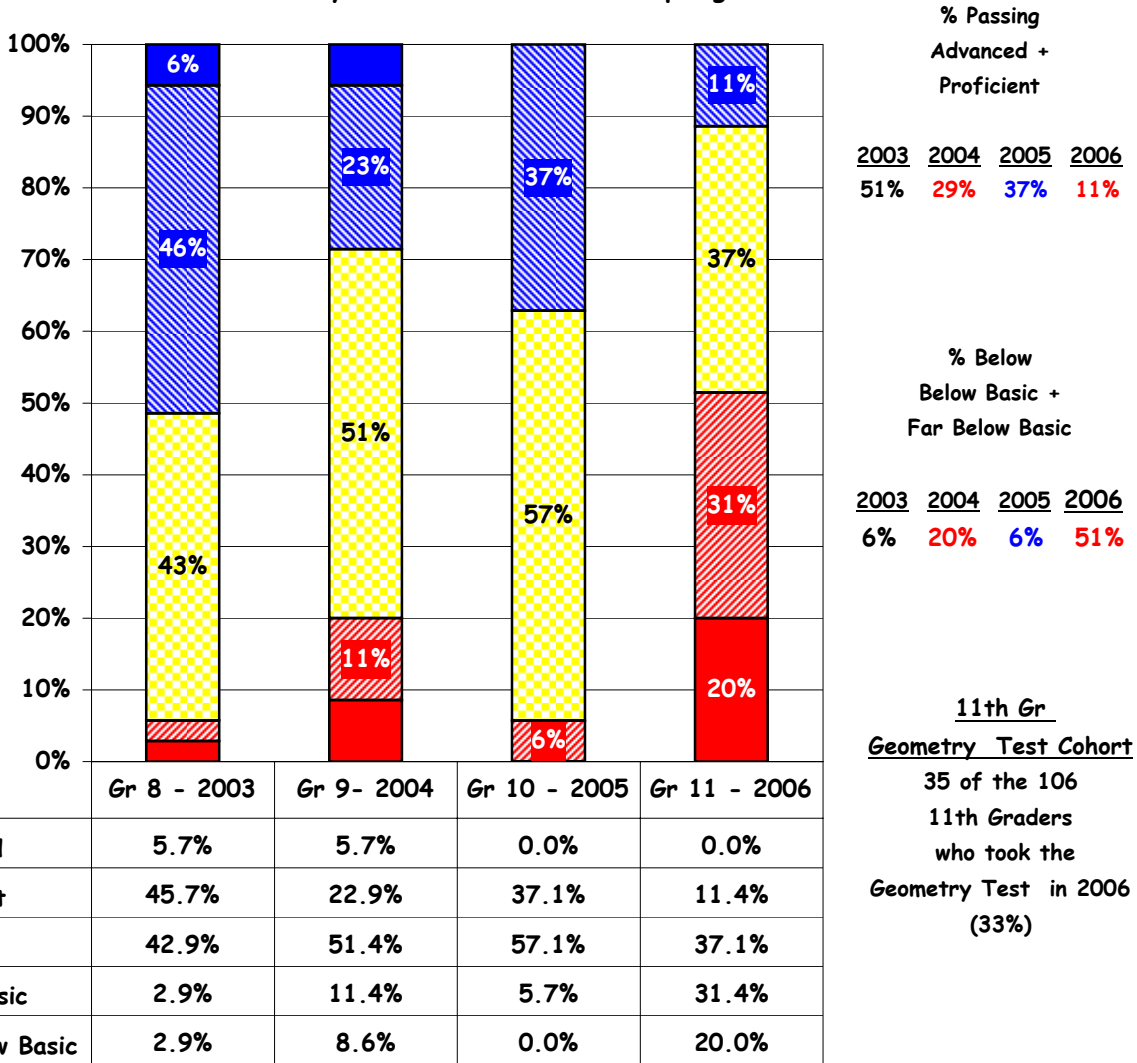
**Mathematics Performance Standards  
Percent of Students with Level Changes**



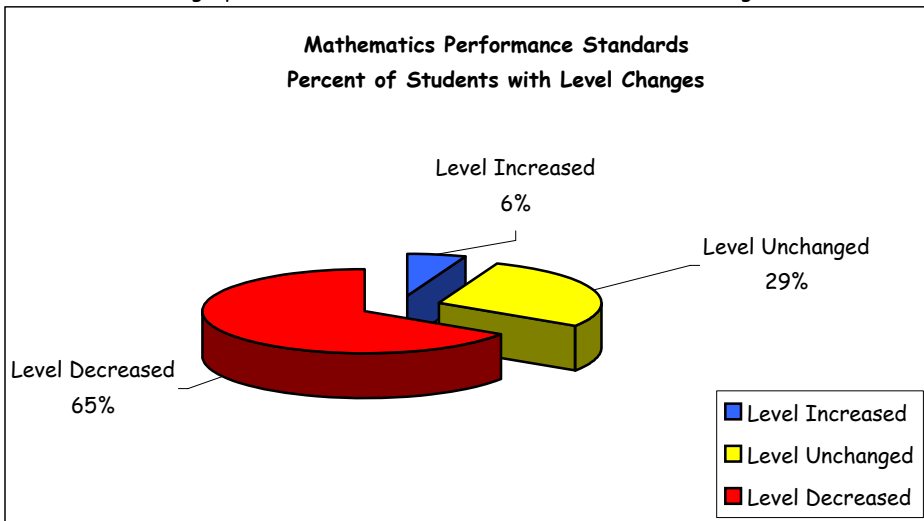
Please Note:  
This graph includes only those students in the 11th grade cohort who took the High School Summative Math Test in 2006 and had a valid Math Standards score in 2003, 2004, 2005 and 2006.  
# Students = 107

**Mathematics Performance Standards  
Districtwide/Matched Cohort**

**Districtwide - Current Grade 12  
Geometry Test in 11th Grade - Spring 2006**



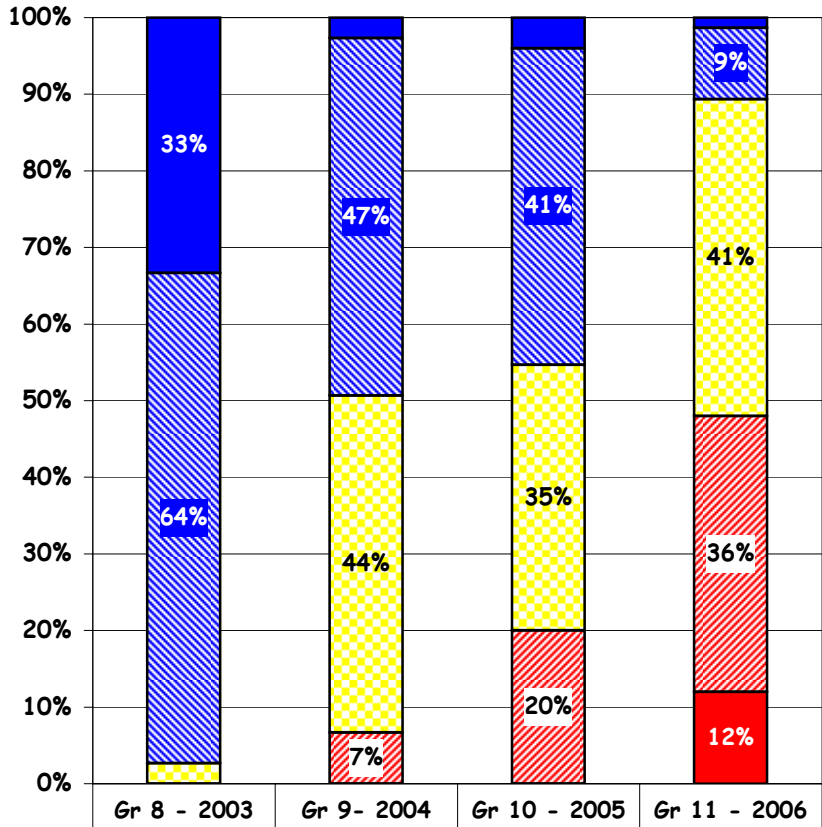
Please Note: This graph does not include results for students with testing accommodations.



Please Note:  
This graph includes only those students in the 11th grade cohort who took the Geometry Test in 2006 and had a valid Math Standards score in 2003, 2004, 2005 and 2006.  
# Students = 35

**Mathematics Performance Standards  
Districtwide/Matched Cohort**

**Districtwide - Current Grade 12  
Algebra II Test in 11th Grade - Spring 2006**



**% Passing  
Advanced +  
Proficient**

2003	2004	2005	2006
97%	49%	45%	11%

**% Below  
Below Basic +  
Far Below Basic**

2003	2004	2005	2006
0%	7%	20%	48%

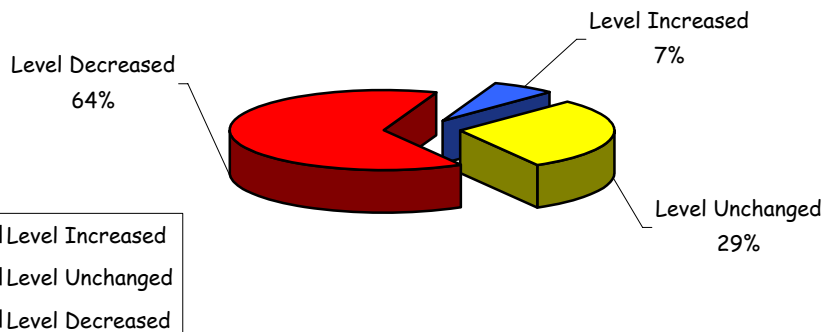
**11th Gr  
Algebra II  
Cohort**

75 of the 104  
11th Graders  
who took the  
Algebra II Tes  
in 2006  
(72%)

	Gr 8 - 2003	Gr 9 - 2004	Gr 10 - 2005	Gr 11 - 2006
Advanced	33.3%	2.7%	4.0%	1.3%
Proficient	64.0%	46.7%	41.3%	9.3%
Basic	2.7%	44.0%	34.7%	41.3%
Below Basic	0.0%	6.7%	20.0%	36.0%
Far Below Basic	0.0%	0.0%	0.0%	12.0%

Please Note: This graph does not include results for students with testing accommodations.

**Mathematics Performance Standards  
Percent of Students with Level Changes**



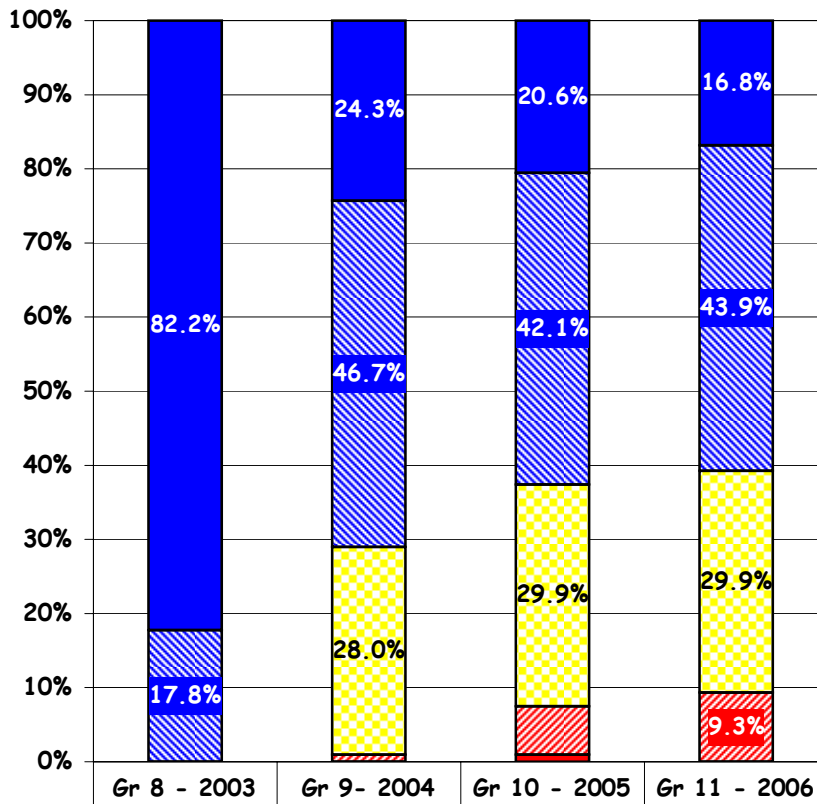
Please Note:

This graph includes only those students in the 11th grade cohort who took the Algebra II Test in 2006 and had a valid Math Standards score in 2003, 2004, 2005 and 2006.

# Students = 75

**Mathematics Performance Standards  
Districtwide/Matched Cohort**

**Districtwide - Current Grade 12  
High School Summative Math Test in 11th Grade - Spring 2006**



**% Passing  
Advanced +  
Proficient**

2003	2004	2005	2006
100%	71%	63%	61%

**% Below  
Below Basic +  
Far Below Basic**

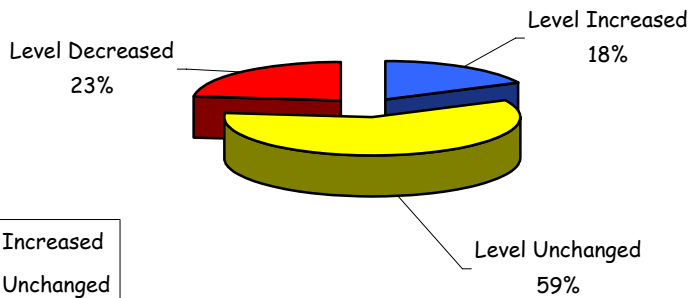
2003	2004	2005	2006
0%	1%	7%	9%

**11th Gr  
Summative Math Test  
Cohort**  
107 of the 134  
11th Graders  
who took the  
HS Summative  
Math Test in 2006  
(80%)

	Gr 8 - 2003	Gr 9 - 2004	Gr 10 - 2005	Gr 11 - 2006
Advanced	82.2%	24.3%	20.6%	16.8%
Proficient	17.8%	46.7%	42.1%	43.9%
Basic	0.0%	28.0%	29.9%	29.9%
Below Basic	0.0%	0.9%	6.5%	9.3%
Far Below Basic	0.0%	0.0%	0.9%	0.0%

Please Note: This graph does not include results for students with testing accommodations.

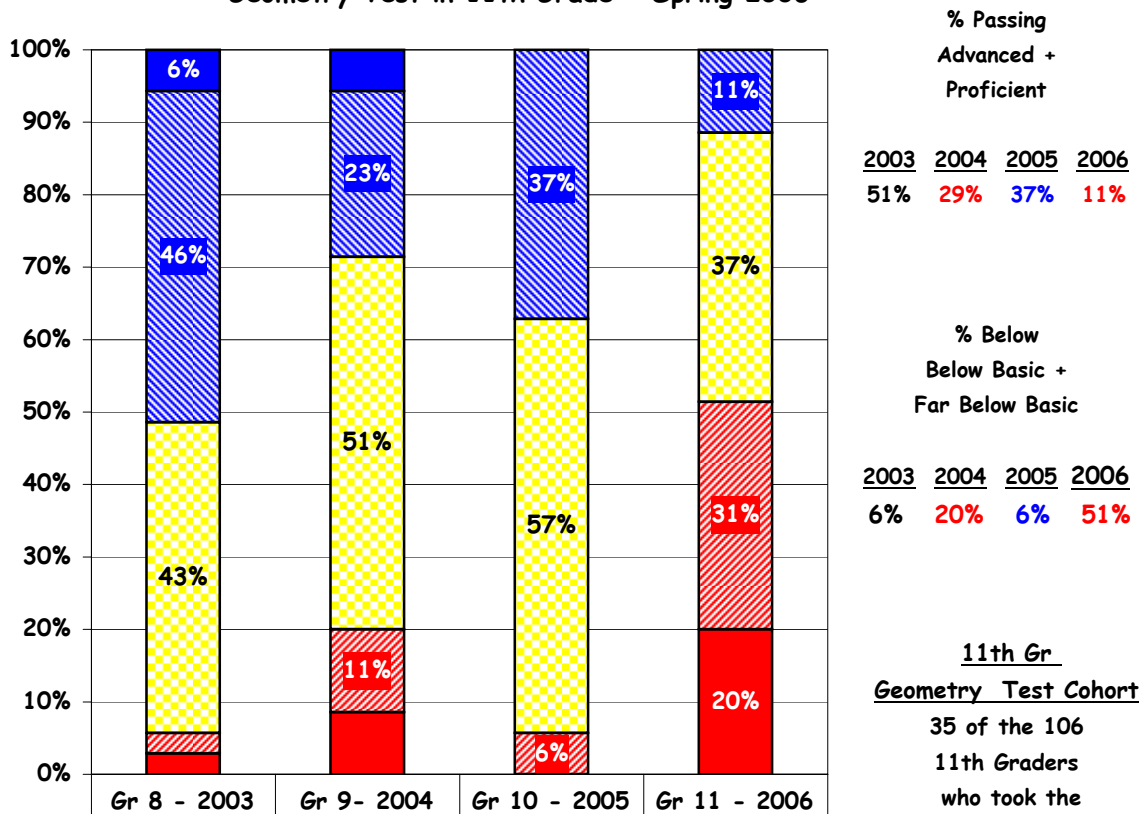
**Mathematics Performance Standards  
Percent of Students with Level Changes**



Please Note:  
This graph includes only  
those students in the 11th  
grade cohort who took the  
High School Summative Math  
Test in 2006 and had a valid  
Math Standards score in  
2003, 2004, 2005 and 2006.  
# Students = 107

**Mathematics Performance Standards  
Districtwide/Matched Cohort**

**Districtwide - Current Grade 12  
Geometry Test in 11th Grade - Spring 2006**



**% Passing  
Advanced +  
Proficient**

2003	2004	2005	2006
51%	29%	37%	11%

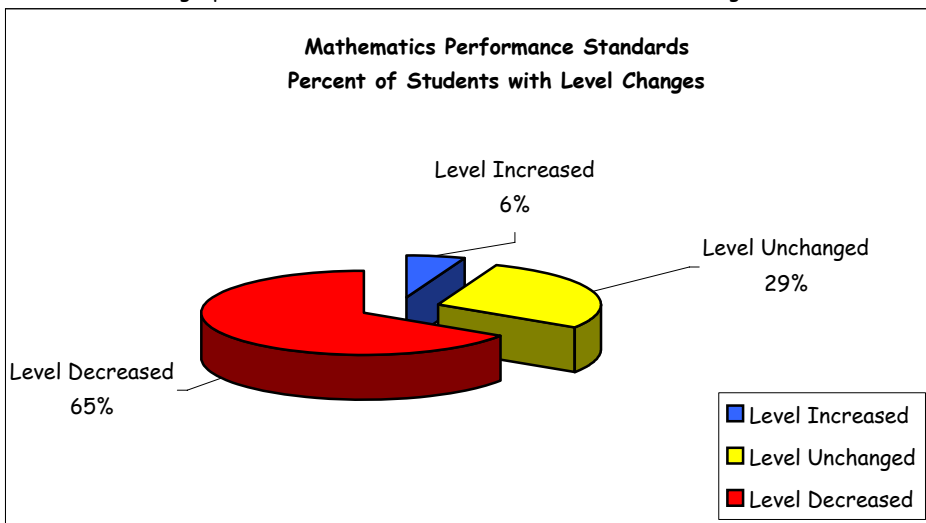
**% Below  
Below Basic +  
Far Below Basic**

2003	2004	2005	2006
6%	20%	6%	51%

**11th Gr  
Geometry Test Cohort**  
35 of the 106  
11th Graders  
who took the  
Geometry Test in 2006  
(33%)

	Gr 8 - 2003	Gr 9 - 2004	Gr 10 - 2005	Gr 11 - 2006
Advanced	5.7%	5.7%	0.0%	0.0%
Proficient	45.7%	22.9%	37.1%	11.4%
Basic	42.9%	51.4%	57.1%	37.1%
Below Basic	2.9%	11.4%	5.7%	31.4%
Far Below Basic	2.9%	8.6%	0.0%	20.0%

Please Note: This graph does not include results for students with testing accommodations.



Please Note:  
This graph includes only those students in the 11th grade cohort who took the Geometry Test in 2006 and had a valid Math Standards score in 2003, 2004, 2005 and 2006.  
# Students = 35