

Appendix E

Noise Assessment, Traffic Noise Model Data Sheets, and Noise Measurement Results



Acoustical & Audiovisual Consultants

**San Marin High School
Athletic Field Upgrade Project
Assessment of Crowd and PA Noise Impact**

Novato, CA

RGD Project #: 16-040

PREPARED FOR:

Rincon Consultants, Inc.
449 15th Street, Suite 303
Oakland, CA 94612

PREPARED BY:

Harold Goldberg, P.E.
Tsz "Anthony" Wong
Alan Rosen

DATE:

Revised 27 March 2017
~~15-December-2016~~

1 Introduction

Novato Unified School District (NUSD or District) is proposing an athletic field upgrade project at San Marin High School in Novato, California. The proposed project would involve installation of athletic field lights and an upgraded public address system. The project would also expand the hours of use for the athletic field by allowing use of the field during non-daylight hours.

This report analyzes the change in noise levels at nearby residential areas due to the project. The analysis includes acoustical measurements of the existing ambient noise environment at adjacent residences when the athletic field was being used as well as times when there was no activity on the field. Project noise sources evaluated in the study include activities on the field, spectators, and PA system. The project generated noise levels are assessed with respect to the California Environmental Quality Act (CEQA) guidelines and the adopted thresholds of significance.

2 Fundamental Concepts of Environmental Noise

Terminology: Noise can be defined as unwanted sound and is commonly measured with an instrument called a sound level meter. The sound level meter “captures” sound with a microphone and converts it into a number called a sound level. Sound levels are expressed in units of decibels (dB).

To correlate the microphone signal to a level that corresponds to the way humans perceive noise, the A-weighting filter is used. A-weighting de-emphasizes low-frequency and very high-frequency sound in a manner similar to human hearing. The use of A-weighting is required by most local agencies as well as other federal and State noise regulations (e.g. Caltrans, EPA, OSHA and HUD). The abbreviation dBA is often used when the A-weighted sound level is reported.

Because of the time-varying nature of environmental sound, there are many descriptors that are used to quantify the sound level. Although one individual descriptor alone does not fully describe a particular noise environment, taken together, they can more accurately represent the noise environment. Descriptors that are commonly used in environmental studies include L_{max} , L_{eq} , L_{90} and L_{dn} and CNEL.

The maximum instantaneous noise level (L_{max}) is often used to identify the loudness of a single event such as a car pass-by or airplane flyover. To express the average noise level, the L_{eq} (equivalent noise level) is used. The L_{eq} can be measured over any length of time but is typically reported for periods of 15 minutes to one hour. The background noise level (or residual noise level) is the sound level during the quietest moments. It is usually generated by steady sources such as distant freeway traffic. It can be quantified with a descriptor called the L_{90} which is the sound level exceeded 90 percent of the time.

Type of Noise or Environment	Decibels
Recording studio	20
Soft whisper; quiet bedroom	30
Busy open-plan office	55
Normal conversation	60-65
Automobile at 20 mph 25 ft. away	65
Vacuum cleaner 10 ft. away	70
Dump truck at 50 mph 50 ft. away	90
Gas leaf blower at 25 ft. away	100
Helicopter 200 ft. away	100
Train horn 100 ft. away	105
Claw hammer; jet takeoff 200 ft. away	120
Shotgun at shooter's ear	140

To quantify the noise level over a 24-hour period, the Day/Night Average Sound Level (L_{dn} or DNL) or Community Noise Equivalent Level (CNEL) is used. These descriptors are averages like the L_{eq} except they include, by definition, a ten dBA “penalty” for noises that occur during nighttime hours (10 p.m. to 7 a.m.) to account for people's sensitivity to intrusive noise during these hours. The CNEL also includes a five dBA “penalty” during evening hours (7 p.m. to 10 p.m. to account for peoples’ increased sensitivity during these hours (American National Standards Institute, ANSI S1.1-1994, *Acoustical Terminology*, 1994).

Community Response to changes in noise levels: The potential for adverse community response tends to increase as an intrusive noise becomes more noticeable above existing background noise levels. For example, if an intrusive noise has an average level that is comparable to existing average ambient noise levels, then the intrusive sound would tend to blend in with the ambient noise. However, if the intrusive sound is significantly greater than the ambient noise then the intrusive sound would be more noticeable and potentially more annoying as it can interfere with rest, working efficiency, social interaction and general tranquility.

In general, human sound perception is such that a change in sound level of 3 dB is just noticeable, a change of 5 dB clearly noticeable and a change of 10 dB is perceived as a doubling (or halving) of loudness (Cowen, *Handbook of Environmental Acoustics*, 1994).

3 Acoustical Criteria

3.1 City of Novato – General Plan

The City of Novato General Plan Safety and Noise Chapter provides noise and land use compatibility standards. Office of Planning and Research provides guidelines for acceptable noise levels. These standards are shown in Figure 1 and are used to determine whether a proposed development or land use is located in an area requiring special noise mitigation measures. Residential land use and schools are considered “normally acceptable” when exposed to a CNEL of 60 dBA or less.

FIGURE 1: City of Novato General Plan – Noise and Land Use Compatibility Standards

LAND USE CATEGORY	EXTERIOR NOISE EXPOSURE L _{dn} OR CNEL, dB					
	55	60	65	70	75	80
Residential, Hotels, and Motels			////////// //////////			XXXXXXX XXXXXXX
Outdoor Sports and Recreation, Neighborhood Parks and Playgrounds				////////// //////////		XXX XXX
Schools, Libraries, Museums, Hospitals, Personal Care, Meeting Halls, Churches			////////// //////////			XXXXXXX XXXXXXX
Office Buildings, Business Commercial, and Professional					////////// //////////	XXX XXX
Auditoriums, Concert Halls, Amphitheaters	////////// //////////					XXXXXXXXXXXX XXXXXXXXXXXX
Industrial, Manufacturing, Utilities, and Agriculture						////////// //////////



NORMALLY ACCEPTABLE

Specified land use is satisfactory, based upon the assumption that any buildings involved are of normal convention construction, without any special insulation requirements.



CONDITIONALLY ACCEPTABLE

Specified land use may be permitted only after detailed analysis of the noise reduction requirements and needed noise insulation features included in the design.



UNACCEPTABLE

New construction or development should generally not be undertaken because mitigation is usually not feasible to comply with noise element policies.

The following General Plan policies and programs are relevant to the potential noise impact of project generated noise on the existing land uses in the study area.

SF Policy 38 Noise Reduction and Mitigation. Mitigate noise exceeding standards and significant noise impacts to the maximum feasible extent.

SF Program 38.1: Require acoustical studies and mitigation measures for new developments and transportation improvements which affect noise sensitive uses such as schools, hospitals, libraries, group care facilities, and convalescent homes.

SF Program 38.5: Investigate mitigation measures for projects that would cause a substantial increase in noise (i.e., cause the L_{dn} to increase above 60 dBA or cause an increase of 5 dBA L_{dn} or more in the noise environment) in adjacent residential areas or in residential areas affected by traffic generated by the proposed project. (Draft EIR, pages 166 and 167, Impact 4.7A) In areas where noise is within standards, some increases are inevitable. This program is to keep those increases to the minimum necessary.

3.2 City of Novato – Noise Ordinance

The City of Novato Municipal Code Zoning Ordinance (Section 19.22.070) includes performance standards for allowable exterior noise levels. According to this section “uses, activities, and processes shall not generate or emit any noise or sound in excess of the levels provided in Table 3-5 beyond the property line of the parcel on which they are located”. The noise standards are shown in Table 1. Construction activities between 7 a.m. and 6 p.m. on weekdays and between 10 a.m. and 5 p.m. on Saturday are exempted from these standards. Routine maintenance activities are also exempted.

**Table 1: City of Novato Municipal Code Allowable Exterior Noise Levels
 [Municipal Code Table 3-5]**

Type of Land Use	Allowable Exterior Noise Levels (1)	
	Time Interval	Maximum Noise Level (2)
Residential (3)	10 p.m. to 6 a.m.	45 dBA
	6 a.m. to 10 p.m.	60 dBA
Commercial (4)	10 p.m. to 6 a.m.	60 dBA
	6 a.m. to 10 p.m.	70 dBA
Industrial or Manufacturing (4)	Anytime	70 dBA

Notes:

- (1) Each of the noise limits specified in Table 3-5 shall be reduced by 5 dBA for impulse or simple tone noises. If the ambient noise exceeds the resulting standard, the ambient shall be the standard.
- (2) Maximum noise levels shall not be exceeded for an aggregate period of more than three minutes within a one-hour time period or by more than 20 dBA at any time.
- (3) Residential standards apply to sensitive receptors such as schools, hospitals, libraries, group care facilities, and convalescent homes. These uses may require special mitigation.
- (4) Commercial standards apply to Mixed Use Districts.

4 Existing Noise Environment

The area around the project site is generally residential. The nearest residences are to the north and west along San Ramon Way and Aspen Drive and to the east along San Marin Drive.

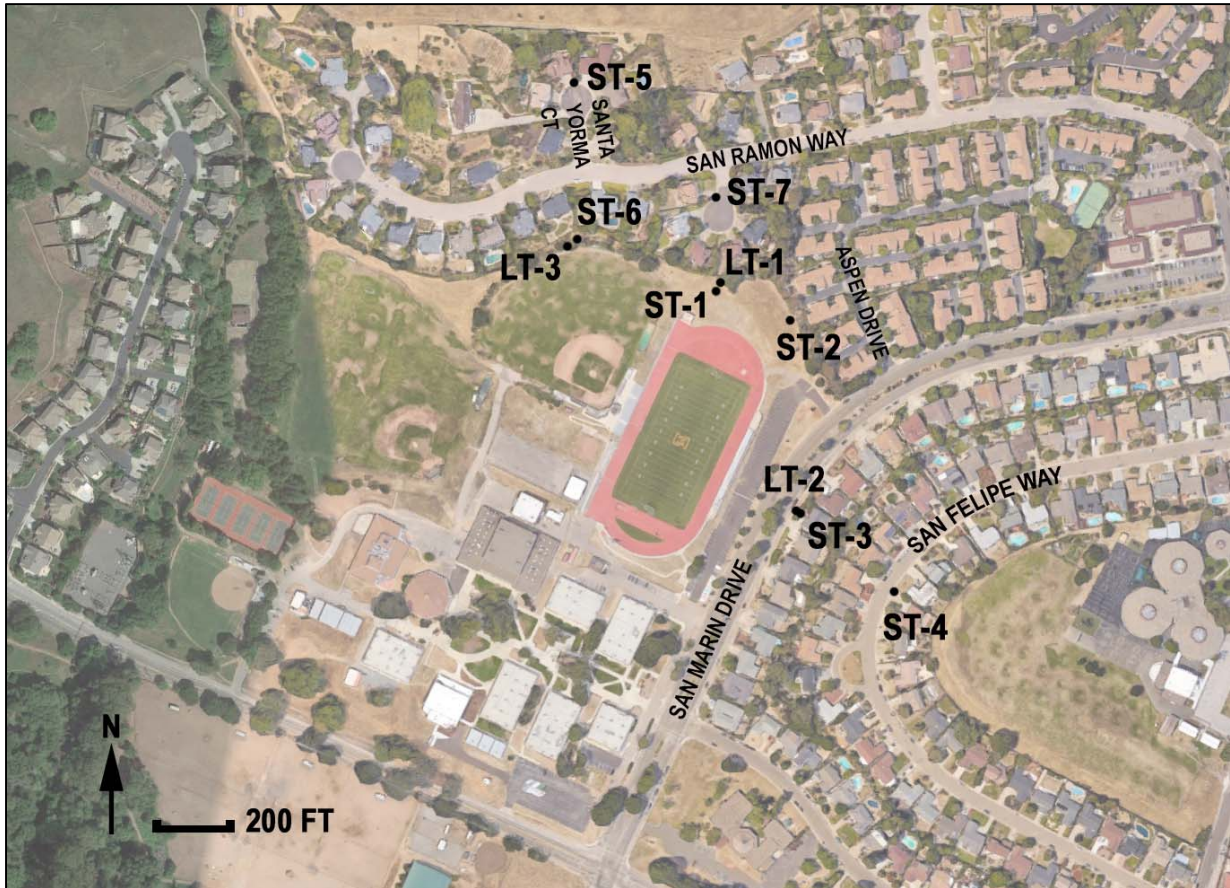
Noise levels around San Marin High School are from school sources as well as other ambient noise sources. Activities at the school stadium consist of sporting events (e.g. football games, soccer games, track meets), sports practices and special events such as graduation. During football games and other events, an existing public address (PA) system is used. The existing PA system consists of five loudspeakers mounted on the pressbox building behind the home bleachers and six smaller loudspeakers along the back row of the visitor bleachers.

There are also practices which generate lower noise levels than games, but tend to occur more frequently. Other ambient noise sources are vehicular traffic on local roads and occasional aircraft.

4.1 Noise Measurements

In order to quantify existing noise levels at adjacent noise sensitive land uses, long-term noise measurements were conducted at three locations and short-term measurements were made at seven locations. The measurement locations were chosen to represent the residential areas near the project site. Figure 2 shows the locations of the measurements.

Figure 2: Noise Measurement Locations



Long-term Measurements:

The noise monitor at location LT-1 was on the chain link fence at the school property line with homes on Santa Gabriella Court. Location LT-2 was on a street light pole in front of homes along San Marin Drive across from the stadium. Location LT-3 was on a tree near the property line between the baseball field and the homes on San Ramon Way. The long-term noise measurement results are shown in Figures 3, 4 and 5.

The first noise monitoring period extended from 4 PM on Thursday, 8/25/16 to the 4 PM on Monday 8/29/16. This monitoring period included typical school day activities, Saturday football games (Varsity, JV and Frosh) as well as Sunday Pop Warner football games. Continuous audio recordings were made at the long-term measurement locations to help identify the various noise sources. A second noise monitoring period extended from 4 PM Friday 11/4/16 to 3 PM Saturday 11/5/16. This period included Saturday home football games and ambient noise prior to the games.

Figure 3: Long-term Hourly Noise Measurement Results at LT-1

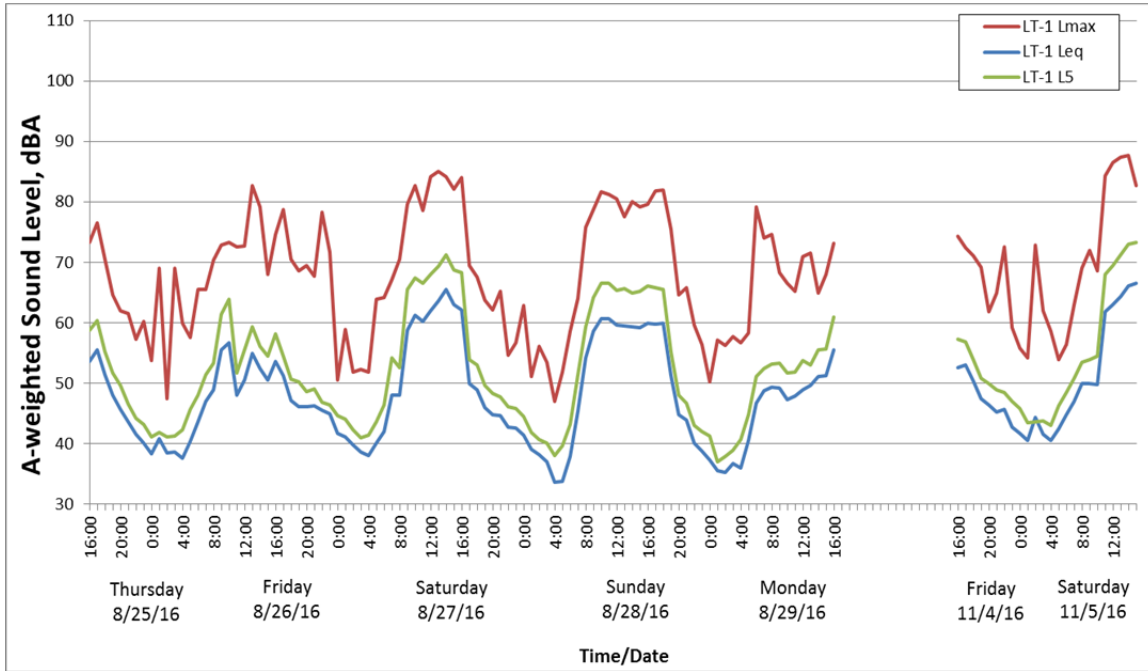


Figure 4: Long-term Hourly Noise Measurement Results at LT-2

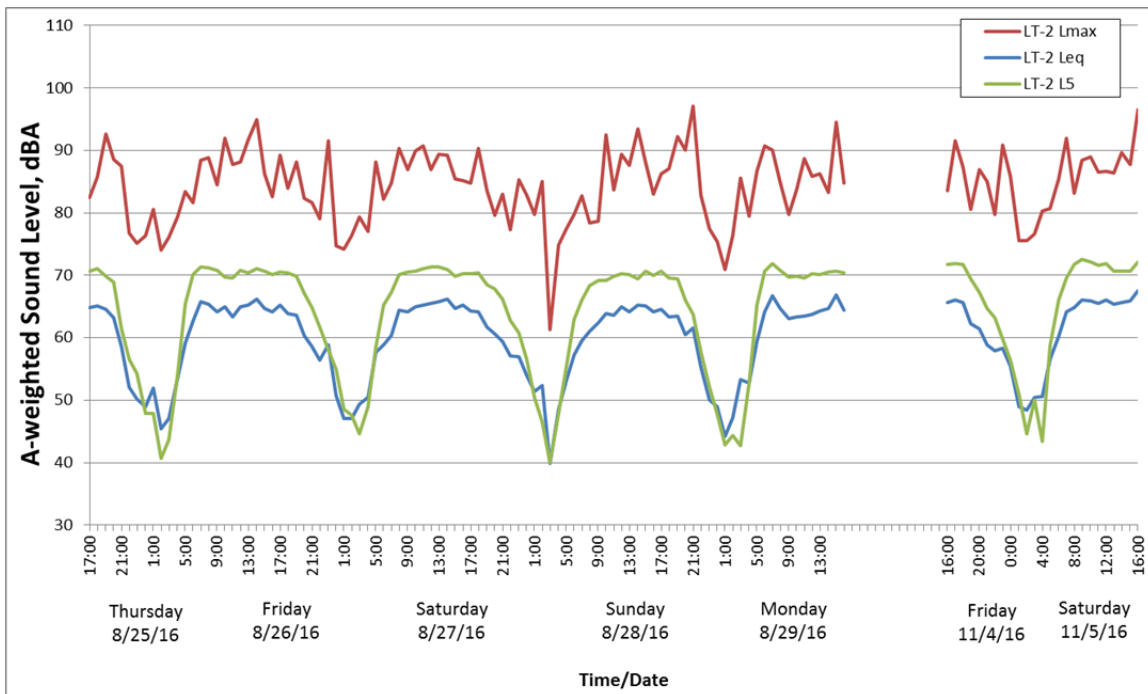
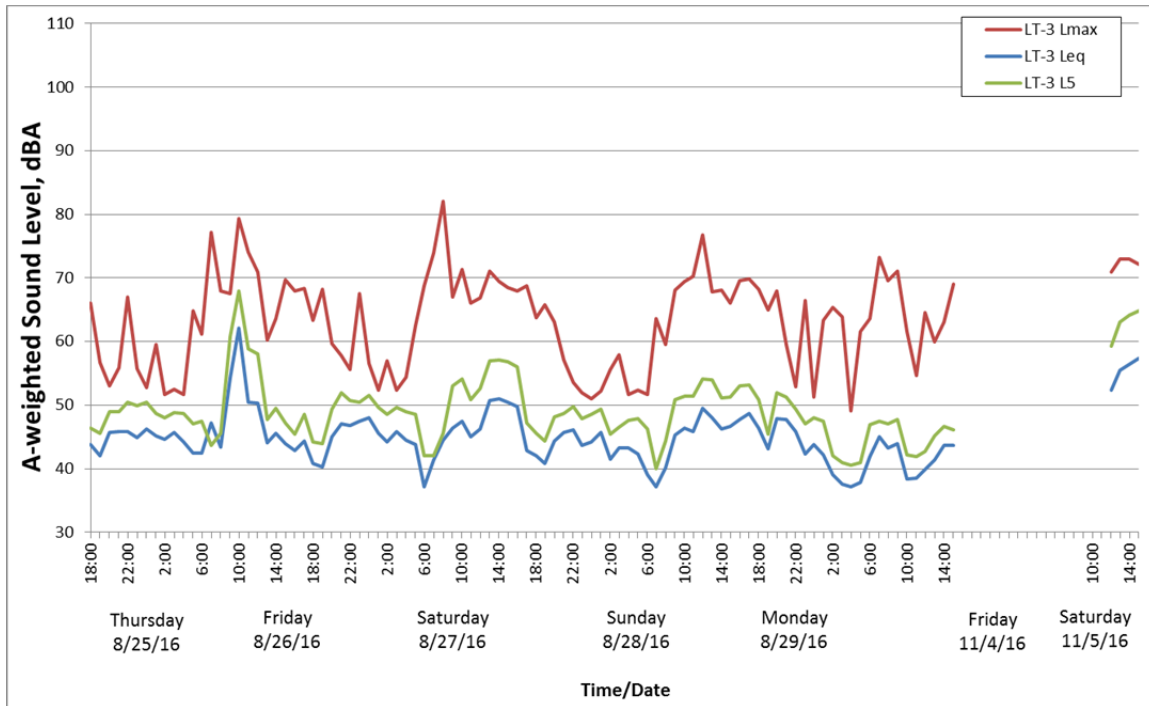


Figure 5: Long-term Hourly Noise Measurement Results at LT-3



Short-term Noise Measurements:

Short-term noise measurements were made during two Saturday varsity football games and, at some locations, on a Monday afternoon to document noise levels without a football game. The short-term measurements were made at locations that represent the residences near the stadium. The short-term measurements allow for direct observation of the existing ambient noise as well as help determine noise levels at other locations in the community. In addition, the short-term locations help quantify noise from the school with less influence from other ambient noise sources. Besides short-term measurement ST-6 being measured at 24 feet above ground, the rest of the short term noise measurements were made at a height of five feet above ground and the noise levels are shown in Table 2 and Table 3.

The varsity football game on August 27th, 2016 was with Kennedy High School. The varsity game had approximately 594 people present, which includes the teams, cheerleaders, coaches, staff & spectators. The game lasted from 2:00 PM to 5:00 PM and the San Marin Mustangs lost by a score of 15-34. The varsity football game on November 5th, 2016 was with Novato High School and had approximately 1,200 people present. The game lasted from 2:00 PM to 4:00 PM and the San Marin Mustangs won by a score of 67-0.

Table 2: Short-Term Noise Measurement Results during Varsity Football Games

Site	Location	Date/Time	L _{eq}	L ₅	L _{max}
ST-1	Top of hill north of stadium, approx. 22 ft from north property line	8/27/16 14:02 – 14:18	62	68	PA: 62 typ. Crowd: 70 typ. Whistles: 72 typ.
		11/5/16 13:58 – 14:18	63	70	PA: 67 – 74 Crowd: 72 typ. Whistles: 54 - 65
ST-2	Top of hill northeast of field, near the multi-family homes along Aspen Drive	8/27/16 14:22 – 14:39	56	61	PA: 57 - 62 Crowd: 57 - 64 Whistles: 61 typ.
		11/5/16 14:21 – 14:42	56	62	PA: 67 typ. Crowd: 54 - 66 Whistles: 58 - 73
ST-3	San Marin Drive	8/27/16 14:59 – 15:14	62	68	PA: 61 typ. Crowd: 65 typ. Whistles: 61 typ. Car: 64 - 71
		11/5/16 14:02 – 14:17	61	66	PA: 57 - 64 Crowd: 60 - 70 Whistles: 64 – 68 Car: 63 – 73

Table 2 (cont.): Short-Term Noise Measurement Results during Varsity Football Games

Site	Location	Date/Time	L _{eq}	L ₅	L _{max}
ST-4	San Felipe Way	8/27/16 14:57 – 15:18	51	55	PA: 49 - 56 Crowd: 47 - 61 Whistles: 45 – 52 Car: 51 – 70 Lawn Mower: 48 - 58
		11/5/16 14:23 – 14:38	50	55	PA: 52 - 62 Crowd: 52 - 62 Whistles: 48 – 54 Car: 69
ST-5	Santa Yorma Court	8/27/16 15:43 – 15:58	47	52	PA: 51 - 60 Crowd: 43 - 49 Whistles: 43 – 49 Car: 50 – 54 Plane: 44
		11/5/16 14:48 – 15:04	50	57	PA: 54 - 62 Crowd: 47 - 52 Whistles: 42 – 50 Car: 49 - 56
ST-6	North of baseball field near property line	8/27/16 16:15 – 16:28	53	58	PA: 55 – 62 Crowd: 48 - 69 Whistles: 55 typ.
		11/5/16 15:24 – 15:39	56	64	PA: 66 typ. Crowd: 65 typ. Whistles: 56 typ.
ST-7	Santa Gabriella Court	8/27/16 15:46 – 16:01	47	52	PA: 49 - 52 Crowd: 47 - 54 Whistles: 45 – 51 Car: 55 - 60
		11/5/16 15:11 – 15:31	49	54	PA: 50 - 55 Crowd: 51 - 58 Whistles: 49 typ. Car: 51 - 57 Jet: 50

Table 3: Short-Term Noise Measurement Results without Football Game

Site	Location	Time	L _{eq}	L ₅	L _{max}
ST-4	San Felipe Way	8/29/16 14:51 – 15:06	56	61	Car: 58 – 76
ST-5	Santa Yorma Court	8/29/16 15:41 – 15:55	42	46	Car: 44 – 55 Bird: 48 - 51 Motorcycle: 46 - 57
ST-7	Santa Gabriella Court	8/29/16 15:17 – 15:32	42	45	Car: 44 – 61 Bird: 38 – 40 Dog: 41

5 Future Noise Environment

The first part of this section describes the new public address (PA) system design concept. The second part of this section discusses the methodology and assumptions used to determine future noise levels from all activities in the stadium.

5.1 Public Address (PA) System

San Marin High School will have a new public address system installed in the stadium as part of the project. Since the new PA system design is not finalized at the time of this report, for the purposes of this report, an analysis of the new system was done based on a PA system design similar to that of Hillsdale High School in San Mateo, California.

The new PA system is assumed to include separate audio output zones for the home bleachers, visitor bleachers and “D-zone” areas on both ends of the field. In the bleacher areas, loudspeakers are located on dedicated poles that are 20 to 25 feet apart at an elevation of 15 feet above the rear row of the bleachers. Calculations of PA sound levels were made using the SoundPLAN (version 7.4) computer model. The model takes into account the various noise sources, attenuation (and acoustical reflections) from terrain and buildings.

5.2 Future Activities in the Stadium

To determine the noise from future activities in the stadium, the measured noise levels during football games and practices were used as a basis for determining future noise levels emanating from the field. In order to account for the increases in attendance for games, the crowd noise was assumed to increase at a standard rate for multiple noise sources of 3 dB per doubling of attendance. The assumptions used for calculating future noise levels for each activity are discussed in the following sections.

5.2.1 Football Games

The dominant noise sources during football games include the crowd cheering, referee whistles, coaches/player voices, and the PA system.

According to the project description attendance at typical varsity football games is currently about 400 spectators. Attendance at playoff games and certain rivalry games (Marin Catholic and Novato High) is 1,500. With the project, typical varsity game attendance¹ is expected to increase to 1,440. Attendance at playoff and rivalry games is not expected to increase with the project. Attendance at junior varsity football and freshman football games is also not expected to increase.

5.2.2 School related non-football games (e.g. soccer, lacrosse)

According to the project description, non-football games such as soccer, lacrosse, and track would have lower attendance than varsity football. Usage of the PA is also limited to certain games and events with the project.

5.2.3 School athletic practices

The noise level from school athletic practices was obtained from the long-term measurements. Practice noise is generally limited to the voices of coaches and players as well as the coaches' whistles. No difference is expected between the noise level of practices occurring during the daytime and those occurring during the evening with the project. The PA system would not be used during practices.

5.2.4 Community Usage

Community leagues (including adults) are not expected to use the fields in the evening for athletic games or practices. Currently, the usage of PA at community events is limited to certain games and events. Future PA usage with the project is not expected to change. The noise from community use of the field would include the voices of players, referee whistles, and in some occasions, PA. Highly attended community games such as the youth soccer event and youth football games are expected to generate more noise than others such as youth lacrosse practices and youth soccer games.

5.2.5 Field Usage Assumptions

In order to evaluate the annual average noise levels from each of the fields with and without the project, assumptions were made regarding the number and

¹ Rincon Consultants Email, 26 September 2016 – Based on trip estimates from 13 July 2016 DKS memo. Corresponds to 60% of bleacher capacity (2,400).

distribution of events with the project. Table 4 summarizes the assumptions for field usage.

Table 4: Field Use Assumptions

Field Usage	Timing	Number of Events Per Year
High School Varsity Football Games	until 9:30 PM	78
High School J.V. Football Games	until 6:30 PM	58
High School Freshman Football Games	until 8:30 PM	56
High School Non-Football Games	until 8:30 PM	33
Powder Puff Game	until 9:50pm	1
High School Practice	varies but ends by 8:30 PM	313
Community Usage	varies but ends by 7:00 PM	148
High School Graduation	until 9:00 PM	1

6 Thresholds of Significance used in this Report

According to Appendix G of the *CEQA Guidelines*, a proposed project could have a significant environmental impact if it would result in:

- a. *exposure of persons to or generation of noise levels in excess of standards established in any applicable plan or noise ordinance, or applicable standards of other agencies;*
- b. *exposure of persons to or generation of excessive ground-borne vibration or ground-borne noise levels;*
- c. *a substantial permanent increase in ambient noise levels in the project vicinity above levels existing without the project;*

- d. a substantial temporary or periodic increase in ambient noise levels in the project above levels existing without the project;
- e. exposure of people residing or working in the project area to excessive noise levels if the project is located within an area covered by an airport land use plan, or where such plan has not been adopted, within two miles of a public airport or public use airport; or
- f. exposure of people residing or working in the project area to excessive noise levels if the project is located in the vicinity of a private airstrip.

CEQA does not provide quantitative noise level limits to use as thresholds of significance for a project. Instead, it points to use of local ordinances, adopted standards of agencies as well as the potential for a project to significantly increase existing noise levels above those that were present without the project. Within this framework, the following thresholds are adopted for this project.

Threshold 1: A significant noise impact would occur if the combined noise from all field sources exceeds an L_5 of 55 dBA or L_{max} of 75 dBA at the adjacent uses.

Discussion: For the purposes of assessing impact from the combined noise of all sources associated with activities at the field (e.g. crowd, PA, players and coaches) an hourly L_5 of 55 dBA and L_{max} of 75 dBA are used as a threshold of significance. These thresholds are based on the Novato Municipal Code which sets a noise level limit for residential areas of 60 dBA when the field would be used (between 6 AM and 10 PM). The L_5 and L_{max} descriptors are used because the code states that the noise limit shall not be exceeded for an aggregate period of more than three minutes within a one-hour time period (i.e. 5% of the time or L_5) or by more than 20 dBA at any time (i.e. L_{max}). The thresholds also include a 5 dBA downward adjustment of the noise limit to account for the impulsive characteristic of the noise source as per the code.

Threshold 2: A significant impact would occur if the CNEL on a football game day:

- increases by more than 5 dBA and the future CNEL is less than 60 dBA, or
- increases by more than 3 dBA and the future CNEL is 60 dBA or greater and less than 65 dBA, or
- increases by more than 1.5 dBA and the future CNEL is 65 dBA or greater

Discussion: For the purposes of assessing impact due to increased noise from the project, this report uses thresholds based on a FAA Draft Policy discussion screening and impact thresholds for increases in aircraft noise. This threshold is generally consistent with the Novato General Plan (SF Program 38-5).

The L_{dn} has an adjustment to account for people's increased sensitivity to noise at night (between 10 pm and 7 am) but does not include an adjustment to account for the increased sensitivity of people to noise during evening hours when the games would occur. There is another metric called CNEL which is similar to the L_{dn} but includes a 5 dBA "penalty" which is added to noise during evening hours (7 pm – 10 pm) to account for peoples' sensitivity to evening noise. This penalty also helps account for the fact that the use of the fields during the evening hours would be more noticeable to the nearby community than its use during the daytime because ambient noise levels are lower during the evening hours.

In order to evaluate the potential impact that would occur as a result of a change from day games to night games, this report considers the increase in the CNEL on a day when a Varsity football game is played at night as compared to the CNEL on a day when a Varsity football game is played during the day. Football games are used since these are generally the loudest events at the high school stadiums.

The CNEL contribution from football games were calculated based on football game measurements at each of the short-term noise measurement locations. The football generated CNEL was then added to the ambient CNEL to determine a total CNEL for both existing and future conditions.

Use of CNEL increase on a Varsity football game day is considered fairly conservative since the Varsity football games would only occur about five times a year. In addition, the other games/activities on the field are quieter and would generate smaller increases.

Threshold 3: A significant impact would occur if the annual average CNEL:

- increases by more than 5 dBA and the future CNEL is less than 60 dBA, or
- increases by more than 3 dBA and the future CNEL is 60 dBA or greater and less than 65 dBA, or
- increases by more than 1.5 dBA and the future CNEL is 65 dBA or greater

Discussion: While the CNEL increase on a Varsity football game day is helpful to understand potential impact on a daily basis, it does not necessarily provide a measure of the impact over time since there will be events happening on the field throughout the year.

In order to evaluate the potential impact of noise from all field related activities during the course of a year, this report considers the increase in the annual average CNEL that would result from allowing soccer, lacrosse, practices and other non-school activities on the field at night.

To determine the increase in the annual average CNEL from all field sources, a similar method was used. In this case, an annual average CNEL from each field noise source was calculated for existing and future conditions based on Table 5. The existing and future annual average field activity CNEL for each field source was then added to the ambient CNEL to determine a total CNEL for existing and future conditions.

7 Impact and Mitigation Measures

The following section describes potential impacts for San Marin High School based on a comparison of project generated noise with adopted thresholds of significance. Where impacts are identified, feasible noise mitigation measures are provided. For ease of identification, any receptor exposed to a significant impact is identified in the following tables with “**bold**” numbers.

Noise from Activities on the Field

Figure 6 shows the L_{max} noise levels that were calculated from the assumed PA design. The future PA noise levels are generally quieter than those of the existing PA system as documented by the football game noise measurements. For example, at the nearest homes to the north (ST-1) the measured PA L_{max} ranged from 62 to 74 dBA and the predicted L_{max} is 60 dBA due to the new PA².

Table 5 summarizes the L_5 and L_{max} noise level results of a varsity football game with the project at the receiver locations. Varsity football game noise with the project would generate L_{max} noise levels that do not exceed the threshold of 75 dBA at the receivers. Varsity football game noise with the project would generate L_5 noise levels that exceed the threshold of 55 dBA at all of the receiver locations except ST-5 which is the farthest from the field (approximately 720 feet). This is considered a significant impact.

To supplement the information in Table 5, we have provided Table 5a which shows the noise levels from other stadium activities for comparison with the Noise Ordinance limits. It is, however, important to note that while many of these activities will exceed the Noise Ordinance limit, they are currently exceeding this limit.

² The design concept of the new PA system includes loudspeakers at the both ends of the field (D-zones) to cover participants in activities that occur in those areas such as track and field events. These D-zone loudspeakers are not expected to be used for football games and are therefore, not included in the noise contours in Figure 6. The noise contribution of D-zone loudspeakers is included in the other noise impact analyses to represent worst case conditions.

Figure 6: Noise Contours from New PA System During Football Game L_{max} , dBA



Table 5: L_5 and L_{max} Due to Varsity Football Game

Receiver		Varsity Football Games	
		Hourly L_5 (dBA)	L_{max} (dBA)
ST-1	Top of hill near homes north of field	71	73
ST-2	Near multi-family homes on Aspen Dr.	65	69
ST-3	San Marin Drive	71	73
ST-4	San Felipe Way	60	67
ST-5	Santa Yorma Court	54	57
ST-6	North of baseball field at property line	62	69
ST-7	Santa Gabriella Court	56	60

Table 5a: L₅ Due to Non-Varsity Football Stadium Uses

Receiver	L ₅ , dBA					
	High School JV and Freshman Football Games	High School Non-Football Games	Practice	Community Games and Practices	Community Special Events	Graduation
ST-1	65	60 - 64	57	56 - 67	68 - 71	71
ST-2	60	54 - 59	50	48 - 61	62 - 65	65
ST-3	66	60 - 65	52	50 - 66	67 - 71	71
ST-4	55	50 - 54	45	44 - 55	56 - 60	60
ST-5	50	43 - 49	45	43 - 51	52 - 54	54
ST-6	57	50 - 56	54	53 - 58	58 - 61	61
ST-7	51	46 - 50	43	42 - 51	52 - 56	56

Table 6 compares the existing and future CNEL on a football game day. Based on the comparison, the CNEL increase at most of the receivers would experience an increase less which is less than the threshold of 3 to 5 dBA. This is less than significant. However, the residences to the north of the school (ST-1 and ST-2) would experience an increase of up to 5.8 dBA which is greater than the threshold for a significant increase of 5 dBA. This is considered a significant impact.

Table 6: Increase in CNEL on a Varsity Game Day

Receiver		Game Day CNEL (dBA)			
		Noise Source	Existing	Future	Increase
ST-1	Top of hill near homes north of field	Ambient	51.7	51.7	
		Football Games	52.6	60.5	
		Total	55.2	61.0	5.8
ST-2	Near multi-family homes on Aspen Dr.	Ambient	47.6	47.6	
		Football Games	46.4	54.6	
		Total	50.0	55.4	5.3
ST-3	San Marin Drive	Ambient	64.1	64.1	
		Football Games	52.1	60.5	
		Total	64.4	65.7	1.3
ST-4	San Felipe Way	Ambient	56.1	56.1	
		Football Games	41.8	49.6	
		Total	56.3	57.0	0.7
ST-5	Santa Yorma Court	Ambient	47.5	47.5	
		Football Games	39.4	44.1	
		Total	48.1	49.1	1.0
ST-6	North of baseball field near property line	Ambient	47.9	47.9	
		Football Games	44.2	51.2	
		Total	49.5	52.9	3.4
ST-7	Santa Gabriella Court	Ambient	43.1	43.1	
		Football Games	38.8	45.6	
		Total	44.5	45.6	3.1

Table 7 shows the change in the annual average CNEL as a result of the project. The increase in noise accounts for the field use during evening hours which is subject to the 5 dBA penalty of the CNEL descriptor. The annual average CNEL would increase by 0.4 dBA or less and this is less than the threshold of 3 to 5 dBA. Therefore, this is considered a less than significant noise increase.

Table 7: Increase in Annual Average CNEL from All Field Activities

Receiver		Annual Average CNEL (dBA)		
		Existing	Future	Increase
ST-1	Top of hill near homes north of field	53.8	54.2	0.4
ST-2	Near multi-family homes on Aspen Dr.	48.9	49.2	0.3
ST-3	San Marin Drive	64.2	64.2	< 0.1
ST-4	San Felipe Way	56.2	56.2	< 0.1
ST-5	Santa Yorma Court	50.7	50.7	< 0.1
ST-6	North of baseball field near property line	51.7	52.0	0.3
ST-7	Santa Gabriella Court	43.8	43.9	0.1

Mitigation Measure NO-1:

Construct a barrier of practical height (i.e. 8 to 12 foot tall) along the northern property line adjacent to the homes on San Gabriella Court and Aspen Drive. The barrier would reduce noise from the crowd and field activities by approximately 5 dBA at first floor (ground level) elevation. This would be a noticeable reduction in crowd and field noise but noise levels would still exceed an L₅ of 55 dBA at some locations. Rooms on the second story of two-story homes would not benefit from the installation of a sound wall 8 to 12 feet in height. A barrier is not recommended at the property line adjacent to homes on San Ramon Way (near ST-6) since those homes are elevated above the property line and a barrier would not be effective.

A barrier is not reasonably feasible at the front yards of homes across San Marin Drive due to required openings for driveways. However, a barrier could be constructed along the eastern edge of the field and behind the visitor bleachers. The noise reduction provided by this barrier would be limited since the existing bleachers and the edge of the field already provide some noise reduction for homes across San Marin Drive.

Although noise barriers would provide some noise reduction, the resulting noise levels would exceed the adopted thresholds and remain significant after mitigation.

Mitigation Measure NO-2:

Design and operate the new PA system to not exceed an L_5 sound level of 55 dBA at the surrounding residences to the extent possible. This would require distributing highly directional and carefully aimed loudspeakers around the bleachers and field. The distance between the loud speakers and the coverage area should be minimized to reduce the spill to the community. Although the assumed new PA design used in this noise analysis includes these attributes, the project PA design will need to be optimized for the San Marin High School site (stadium and neighbors). In addition, the system output volume should be regulated by an audio processor with the ability to limit the audio output levels (e.g. compressor/limiter).

Noticeable reductions in PA sounds would be expected at distant residences with the new PA system, however, even with a state of the art equipment and design; it is possible that an L_5 sound level of 55 dBA at the nearest residences would not be achievable. Furthermore, at locations where the PA noise can be reasonably limited to 55 dBA, noise from the crowd would still exceed 55 dBA. Therefore, the resulting noise levels would exceed the adopted thresholds and remain significant after mitigation.

*

*

*

RESULTS: SOUND LEVELS

Novator San Marin HS

<Organization?>	2 December 2016
<Analysis By?>	TNM 2.5
	Calculated with TNM 2.5

RESULTS: SOUND LEVELS

PROJECT/CONTRACT:	Novator San Marin HS	
RUN:	Existing Run	
BARRIER DESIGN:	INPUT HEIGHTS	Average pavement type shall be used unless a State highway agency substantiates the use of a different type with approval of FHWA.
ATMOSPHERICS:	20 deg C, 50% RH	

Receiver Name	No.	#DUs	Existing		No Barrier		Increase over existing		With Barrier				
			LAeq1h	LAeq1h	LAeq1h	Crit'n	Calculated	Crit'n	Type Impact	Calculated LAeq1h	Noise Reduction Calculated	Goal	Calculated minus Goal
			dB	dB	dB	dB	dB		dB	dB	dB	dB	dB
ST-1	1	1	0.0	57.4	66	57.4	10	----	57.4	0.0	8	-8.0	
ST-2	3	1	0.0	60.0	66	60.0	10	----	60.0	0.0	8	-8.0	
ST-3	5	1	0.0	68.1	66	68.1	10	Snd Lvl	68.1	0.0	8	-8.0	
SR-24	7	1	0.0	73.2	66	73.2	10	Snd Lvl	73.2	0.0	8	-8.0	
SR-23	9	1	0.0	72.8	66	72.8	10	Snd Lvl	72.8	0.0	8	-8.0	
SR-22	11	1	0.0	65.6	66	65.6	10	----	65.6	0.0	8	-8.0	
SR-21	13	1	0.0	71.5	66	71.5	10	Snd Lvl	71.5	0.0	8	-8.0	
SR-20	15	1	0.0	69.3	66	69.3	10	Snd Lvl	69.3	0.0	8	-8.0	
SR-19	17	1	0.0	71.9	66	71.9	10	Snd Lvl	71.9	0.0	8	-8.0	
SR-18	19	1	0.0	72.3	66	72.3	10	Snd Lvl	72.3	0.0	8	-8.0	
SR-17	21	1	0.0	73.1	66	73.1	10	Snd Lvl	73.1	0.0	8	-8.0	
SR-16	23	1	0.0	68.5	66	68.5	10	Snd Lvl	68.5	0.0	8	-8.0	
SR-15	25	1	0.0	65.1	66	65.1	10	----	65.1	0.0	8	-8.0	
SR-14	27	1	0.0	67.6	66	67.6	10	Snd Lvl	67.6	0.0	8	-8.0	
SR-13	29	1	0.0	65.7	66	65.7	10	----	65.7	0.0	8	-8.0	
SR-12	31	1	0.0	59.3	66	59.3	10	----	59.3	0.0	8	-8.0	
SR-11	33	1	0.0	59.0	66	59.0	10	----	59.0	0.0	8	-8.0	
SR-10	35	1	0.0	67.5	66	67.5	10	Snd Lvl	67.5	0.0	8	-8.0	
SR-9	37	1	0.0	72.2	66	72.2	10	Snd Lvl	72.2	0.0	8	-8.0	
SR-8	39	1	0.0	71.6	66	71.6	10	Snd Lvl	71.6	0.0	8	-8.0	
SR-7	41	1	0.0	63.5	66	63.5	10	----	63.5	0.0	8	-8.0	
SR-6	43	1	0.0	65.4	66	65.4	10	----	65.4	0.0	8	-8.0	
SR-5	45	1	0.0	60.6	66	60.6	10	----	60.6	0.0	8	-8.0	
SR-4	47	1	0.0	69.8	66	69.8	10	Snd Lvl	69.8	0.0	8	-8.0	

RESULTS: SOUND LEVELS

Novator San Marin HS

SR-3	49	1	0.0	67.2	66	67.2	10	Snd Lvl	67.2	0.0	8	-8.0
SR-2	51	1	0.0	66.9	66	66.9	10	Snd Lvl	66.9	0.0	8	-8.0
SR-1	53	1	0.0	66.8	66	66.8	10	Snd Lvl	66.8	0.0	8	-8.0
Dwelling Units		# DUs	Noise Reduction									
			Min	Avg	Max							
			dB	dB	dB							
All Selected		27	0.0	0.0	0.0							
All Impacted		17	0.0	0.0	0.0							
All that meet NR Goal		0	0.0	0.0	0.0							

RESULTS: SOUND LEVELS

Novato San Marin HS

<Organization?>														2 December 2016
<Analysis By?>														TNM 2.5
														Calculated with TNM 2.5

RESULTS: SOUND LEVELS

PROJECT/CONTRACT:	Novato San Marin HS													
RUN:	Existing Plus Project													
BARRIER DESIGN:	INPUT HEIGHTS													
ATMOSPHERICS:	20 deg C, 50% RH													
														Average pavement type shall be used unless a State highway agency substantiates the use of a different type with approval of FHWA.

Receiver													
Name	No.	#DUs	Existing	No Barrier			With Barrier						
			LAeq1h	LAeq1h	Crit'n	Increase over existing	Type	Calculated	Noise Reduction				
				Calculated	Crit'n	Calculated	Crit'n	Impact	LAeq1h	Calculated	Goal	Calculated	Goal
			dBA	dBA	dBA	dB	dB		dBA	dB	dB	minus	Goal
								Sub'l Inc					
ST-1	1	1	0.0	58.9	66	58.9	10	----	58.9	0.0	8	-8.0	-8.0
ST-2	3	1	0.0	61.6	66	61.6	10	----	61.6	0.0	8	-8.0	-8.0
ST-3	5	1	0.0	69.3	66	69.3	10	Snd Lvl	69.3	0.0	8	-8.0	-8.0
SR-24	7	1	0.0	73.5	66	73.5	10	Snd Lvl	73.5	0.0	8	-8.0	-8.0
SR-23	9	1	0.0	73.1	66	73.1	10	Snd Lvl	73.1	0.0	8	-8.0	-8.0
SR-22	11	1	0.0	66.0	66	66.0	10	Snd Lvl	66.0	0.0	8	-8.0	-8.0
SR-21	13	1	0.0	71.9	66	71.9	10	Snd Lvl	71.9	0.0	8	-8.0	-8.0
SR-20	15	1	0.0	69.8	66	69.8	10	Snd Lvl	69.8	0.0	8	-8.0	-8.0
SR-19	17	1	0.0	72.3	66	72.3	10	Snd Lvl	72.3	0.0	8	-8.0	-8.0
SR-18	19	1	0.0	72.9	66	72.9	10	Snd Lvl	72.9	0.0	8	-8.0	-8.0
SR-17	21	1	0.0	73.8	66	73.8	10	Snd Lvl	73.8	0.0	8	-8.0	-8.0
SR-16	23	1	0.0	69.6	66	69.6	10	Snd Lvl	69.6	0.0	8	-8.0	-8.0
SR-15	25	1	0.0	65.5	66	65.5	10	----	65.5	0.0	8	-8.0	-8.0
SR-14	27	1	0.0	69.2	66	69.2	10	Snd Lvl	69.2	0.0	8	-8.0	-8.0
SR-13	29	1	0.0	66.6	66	66.6	10	Snd Lvl	66.6	0.0	8	-8.0	-8.0
SR-12	31	1	0.0	59.9	66	59.9	10	----	59.9	0.0	8	-8.0	-8.0
SR-11	33	1	0.0	60.2	66	60.2	10	----	60.2	0.0	8	-8.0	-8.0
SR-10	35	1	0.0	68.0	66	68.0	10	Snd Lvl	68.0	0.0	8	-8.0	-8.0
SR-9	37	1	0.0	72.6	66	72.6	10	Snd Lvl	72.6	0.0	8	-8.0	-8.0
SR-8	39	1	0.0	72.0	66	72.0	10	Snd Lvl	72.0	0.0	8	-8.0	-8.0
SR-7	41	1	0.0	64.0	66	64.0	10	----	64.0	0.0	8	-8.0	-8.0
SR-6	43	1	0.0	65.6	66	65.6	10	----	65.6	0.0	8	-8.0	-8.0
SR-5	45	1	0.0	61.9	66	61.9	10	----	61.9	0.0	8	-8.0	-8.0
SR-4	47	1	0.0	71.0	66	71.0	10	Snd Lvl	71.0	0.0	8	-8.0	-8.0

RESULTS: SOUND LEVELS

Novato San Marin HS

SR-3	49	1	0.0	68.4	66	68.4	10	Snd Lvl	68.4	0.0	8	-8.0
SR-2	51	1	0.0	68.6	66	68.6	10	Snd Lvl	68.6	0.0	8	-8.0
SR-1	53	1	0.0	68.1	66	68.1	10	Snd Lvl	68.1	0.0	8	-8.0
Dwelling Units		# DUs	Noise Reduction									
			Min	Avg	Max							
			dB	dB	dB							
All Selected		27	0.0	0.0	0.0							
All Impacted		19	0.0	0.0	0.0							
All that meet NR Goal		0	0.0	0.0	0.0							

RESULTS: SOUND LEVELS

Novato San Marin HS

<Organization?>															2 December 2016
<Analysis By?>															TNM 2.5
															Calculated with TNM 2.5
RESULTS: SOUND LEVELS															
PROJECT/CONTRACT:	Novato San Marin HS														
RUN:	Future Run														
BARRIER DESIGN:	INPUT HEIGHTS														
ATMOSPHERICS:	20 deg C, 50% RH														
	Average pavement type shall be used unless a State highway agency substantiates the use of a different type with approval of FHWA.														

Receiver												
Name	No.	#DUs	Existing	No Barrier				With Barrier				
			L _{Aeq1h}	L _{Aeq1h}	Crit'n	Increase over existing		Type Impact	Calculated L _{Aeq1h}	Noise Reduction		
				Calculated		Calculated	Crit'n			Calculated	Goal	Calculated minus Goal
			dBA	dBA		dBA	dB			dB	dB	dB
ST-1	1	1	0.0	57.4	66	57.4	10	----	57.4	0.0	8	-8.0
ST-2	3	1	0.0	60.0	66	60.0	10	----	60.0	0.0	8	-8.0
ST-3	5	1	0.0	68.1	66	68.1	10	Snd Lvl	68.1	0.0	8	-8.0
SR-24	7	1	0.0	73.4	66	73.4	10	Snd Lvl	73.4	0.0	8	-8.0
SR-23	9	1	0.0	73.0	66	73.0	10	Snd Lvl	73.0	0.0	8	-8.0
SR-22	11	1	0.0	65.8	66	65.8	10	----	65.8	0.0	8	-8.0
SR-21	13	1	0.0	71.7	66	71.7	10	Snd Lvl	71.7	0.0	8	-8.0
SR-20	15	1	0.0	69.5	66	69.5	10	Snd Lvl	69.5	0.0	8	-8.0
SR-19	17	1	0.0	72.1	66	72.1	10	Snd Lvl	72.1	0.0	8	-8.0
SR-18	19	1	0.0	72.5	66	72.5	10	Snd Lvl	72.5	0.0	8	-8.0
SR-17	21	1	0.0	73.3	66	73.3	10	Snd Lvl	73.3	0.0	8	-8.0
SR-16	23	1	0.0	67.7	66	67.7	10	Snd Lvl	67.7	0.0	8	-8.0
SR-15	25	1	0.0	65.2	66	65.2	10	----	65.2	0.0	8	-8.0
SR-14	27	1	0.0	67.8	66	67.8	10	Snd Lvl	67.8	0.0	8	-8.0
SR-13	29	1	0.0	65.7	66	65.7	10	----	65.7	0.0	8	-8.0
SR-12	31	1	0.0	59.0	66	59.0	10	----	59.0	0.0	8	-8.0
SR-11	33	1	0.0	59.0	66	59.0	10	----	59.0	0.0	8	-8.0
SR-10	35	1	0.0	67.5	66	67.5	10	Snd Lvl	67.5	0.0	8	-8.0
SR-9	37	1	0.0	72.2	66	72.2	10	Snd Lvl	72.2	0.0	8	-8.0
SR-8	39	1	0.0	71.6	66	71.6	10	Snd Lvl	71.6	0.0	8	-8.0
SR-7	41	1	0.0	63.5	66	63.5	10	----	63.5	0.0	8	-8.0
SR-6	43	1	0.0	65.4	66	65.4	10	----	65.4	0.0	8	-8.0
SR-5	45	1	0.0	60.6	66	60.6	10	----	60.6	0.0	8	-8.0
SR-4	47	1	0.0	69.8	66	69.8	10	Snd Lvl	69.8	0.0	8	-8.0

RESULTS: SOUND LEVELS

Novato San Marin HS

SR-3	49	1	0.0	67.2	66	67.2	10	Snd Lvl	67.2	0.0	8	-8.0
SR-2	51	1	0.0	66.9	66	66.9	10	Snd Lvl	66.9	0.0	8	-8.0
SR-1	53	1	0.0	66.8	66	66.8	10	Snd Lvl	66.8	0.0	8	-8.0
Dwelling Units		# DUs	Noise Reduction									
			Min	Avg	Max							
			dB	dB	dB							
All Selected		27	0.0	0.0	0.0							
All Impacted		17	0.0	0.0	0.0							
All that meet NR Goal		0	0.0	0.0	0.0							

RESULTS: SOUND LEVELS

Novato San Marin HS

<Organization?>																			2 December 2016
<Analysis By?>																			TNM 2.5
																			Calculated with TNM 2.5
RESULTS: SOUND LEVELS																			
PROJECT/CONTRACT:				Novato San Marin HS															
RUN:				Future Plus Project Run															
BARRIER DESIGN:				INPUT HEIGHTS												Average pavement type shall be used unless a State highway agency substantiates the use of a different type with approval of FHWA.			
ATMOSPHERICS:				20 deg C, 50% RH															

Receiver													
Name	No.	#DUs	Existing LAeq1h	No Barrier			Increase over existing			With Barrier			
				Calculated	Crit'n		Calculated	Crit'n		Type Impact	Calculated LAeq1h	Noise Reduction Calculated	Goal
			dB	dB	dB	dB	dB			dB	dB	dB	dB
ST-1	1	1	0.0	59.0	66	59.0	10	----	59.0	0.0	8	-8.0	
ST-2	3	1	0.0	61.6	66	61.6	10	----	61.6	0.0	8	-8.0	
ST-3	5	1	0.0	69.3	66	69.3	10	Snd Lvl	69.3	0.0	8	-8.0	
SR-24	7	1	0.0	73.6	66	73.6	10	Snd Lvl	73.6	0.0	8	-8.0	
SR-23	9	1	0.0	73.3	66	73.3	10	Snd Lvl	73.3	0.0	8	-8.0	
SR-22	11	1	0.0	66.1	66	66.1	10	Snd Lvl	66.1	0.0	8	-8.0	
SR-21	13	1	0.0	72.1	66	72.1	10	Snd Lvl	72.1	0.0	8	-8.0	
SR-20	15	1	0.0	70.0	66	70.0	10	Snd Lvl	70.0	0.0	8	-8.0	
SR-19	17	1	0.0	72.5	66	72.5	10	Snd Lvl	72.5	0.0	8	-8.0	
SR-18	19	1	0.0	73.1	66	73.1	10	Snd Lvl	73.1	0.0	8	-8.0	
SR-17	21	1	0.0	73.9	66	73.9	10	Snd Lvl	73.9	0.0	8	-8.0	
SR-16	23	1	0.0	69.7	66	69.7	10	Snd Lvl	69.7	0.0	8	-8.0	
SR-15	25	1	0.0	65.7	66	65.7	10	----	65.7	0.0	8	-8.0	
SR-14	27	1	0.0	69.3	66	69.3	10	Snd Lvl	69.3	0.0	8	-8.0	
SR-13	29	1	0.0	66.7	66	66.7	10	Snd Lvl	66.7	0.0	8	-8.0	
SR-12	31	1	0.0	60.1	66	60.1	10	----	60.1	0.0	8	-8.0	
SR-11	33	1	0.0	62.1	66	62.1	10	----	62.1	0.0	8	-8.0	
SR-10	35	1	0.0	68.0	66	68.0	10	Snd Lvl	68.0	0.0	8	-8.0	
SR-9	37	1	0.0	72.6	66	72.6	10	Snd Lvl	72.6	0.0	8	-8.0	
SR-8	39	1	0.0	72.0	66	72.0	10	Snd Lvl	72.0	0.0	8	-8.0	
SR-7	41	1	0.0	64.0	66	64.0	10	----	64.0	0.0	8	-8.0	
SR-6	43	1	0.0	65.6	66	65.6	10	----	65.6	0.0	8	-8.0	
SR-5	45	1	0.0	61.9	66	61.9	10	----	61.9	0.0	8	-8.0	
SR-4	47	1	0.0	71.0	66	71.0	10	Snd Lvl	71.0	0.0	8	-8.0	

RESULTS: SOUND LEVELS

Novato San Marin HS

SR-3	49	1	0.0	68.4	66	68.4	10	Snd Lvl	68.4	0.0	8	-8.0
SR-2	51	1	0.0	68.6	66	68.6	10	Snd Lvl	68.6	0.0	8	-8.0
SR-1	53	1	0.0	68.1	66	68.1	10	Snd Lvl	68.1	0.0	8	-8.0
Dwelling Units		# DUs	Noise Reduction									
			Min	Avg	Max							
			dB	dB	dB							
All Selected		27	0.0	0.0	0.0							
All Impacted		19	0.0	0.0	0.0							
All that meet NR Goal		0	0.0	0.0	0.0							

Freq Weight : A
Time Weight : FAST
Level Range : 40-100
Max dB : 79.3 - 2016/09/23 19:02:03
Level Range : 40-100
SEL : 93.2
Leq : 63.7

No. s	Date Time	(dB)
1	2016/09/23 18:58:37	55.2
2	2016/09/23 18:58:38	56.2
3	2016/09/23 18:58:39	58.4
4	2016/09/23 18:58:40	64.1
5	2016/09/23 18:58:41	69.9
6	2016/09/23 18:58:42	68.7
7	2016/09/23 18:58:43	61.0
8	2016/09/23 18:58:44	54.3
9	2016/09/23 18:58:45	49.3
10	2016/09/23 18:58:46	47.9
11	2016/09/23 18:58:47	46.8
12	2016/09/23 18:58:48	44.7
13	2016/09/23 18:58:49	43.0
14	2016/09/23 18:58:50	43.3
15	2016/09/23 18:58:51	43.1
16	2016/09/23 18:58:52	44.8
17	2016/09/23 18:58:53	45.6
18	2016/09/23 18:58:54	47.2
19	2016/09/23 18:58:55	51.9
20	2016/09/23 18:58:56	59.6
21	2016/09/23 18:58:57	65.7
22	2016/09/23 18:58:58	69.4
23	2016/09/23 18:58:59	65.3
24	2016/09/23 18:59:00	58.4
25	2016/09/23 18:59:01	56.7
26	2016/09/23 18:59:02	61.3
27	2016/09/23 18:59:03	66.7
28	2016/09/23 18:59:04	69.1
29	2016/09/23 18:59:05	65.8
30	2016/09/23 18:59:06	58.1
31	2016/09/23 18:59:07	57.3
32	2016/09/23 18:59:08	63.1
33	2016/09/23 18:59:09	66.0
34	2016/09/23 18:59:10	65.7
35	2016/09/23 18:59:11	62.0
36	2016/09/23 18:59:12	58.1
37	2016/09/23 18:59:13	59.5
38	2016/09/23 18:59:14	59.0
39	2016/09/23 18:59:15	64.4
40	2016/09/23 18:59:16	68.5
41	2016/09/23 18:59:17	68.4
42	2016/09/23 18:59:18	64.2
43	2016/09/23 18:59:19	60.1
44	2016/09/23 18:59:20	58.6
45	2016/09/23 18:59:21	55.7
46	2016/09/23 18:59:22	54.7
47	2016/09/23 18:59:23	54.4
48	2016/09/23 18:59:24	51.5
49	2016/09/23 18:59:25	50.4
50	2016/09/23 18:59:26	49.4
51	2016/09/23 18:59:27	44.8
52	2016/09/23 18:59:28	44.3
53	2016/09/23 18:59:29	42.6
54	2016/09/23 18:59:30	42.1
55	2016/09/23 18:59:31	42.8
56	2016/09/23 18:59:32	44.2
57	2016/09/23 18:59:33	46.5
58	2016/09/23 18:59:34	47.5
59	2016/09/23 18:59:35	46.7
60	2016/09/23 18:59:36	46.0
61	2016/09/23 18:59:37	45.5
62	2016/09/23 18:59:38	47.2
63	2016/09/23 18:59:39	47.7
64	2016/09/23 18:59:40	48.1
65	2016/09/23 18:59:41	52.2
66	2016/09/23 18:59:42	50.9
67	2016/09/23 18:59:43	54.4
68	2016/09/23 18:59:44	60.5
69	2016/09/23 18:59:45	66.0
70	2016/09/23 18:59:46	68.1
71	2016/09/23 18:59:47	67.5
72	2016/09/23 18:59:48	64.3
73	2016/09/23 18:59:49	65.5
74	2016/09/23 18:59:50	69.4
75	2016/09/23 18:59:51	67.8
76	2016/09/23 18:59:52	61.0
77	2016/09/23 18:59:53	62.5
78	2016/09/23 18:59:54	65.5
79	2016/09/23 18:59:55	63.5
80	2016/09/23 18:59:56	63.5
81	2016/09/23 18:59:57	67.6
82	2016/09/23 18:59:58	67.7
83	2016/09/23 18:59:59	67.4
84	2016/09/23 19:00:00	63.2
85	2016/09/23 19:00:01	69.9

86	2016/09/23	19:00:02	74.4
87	2016/09/23	19:00:03	68.5
88	2016/09/23	19:00:04	58.1
89	2016/09/23	19:00:05	53.5
90	2016/09/23	19:00:06	51.1
91	2016/09/23	19:00:07	49.2
92	2016/09/23	19:00:08	48.7
93	2016/09/23	19:00:09	48.0
94	2016/09/23	19:00:10	48.4
95	2016/09/23	19:00:11	52.6
96	2016/09/23	19:00:12	56.3
97	2016/09/23	19:00:13	62.4
98	2016/09/23	19:00:14	68.0
99	2016/09/23	19:00:15	66.8
100	2016/09/23	19:00:16	58.8
101	2016/09/23	19:00:17	53.0
102	2016/09/23	19:00:18	51.1
103	2016/09/23	19:00:19	51.1
104	2016/09/23	19:00:20	49.3
105	2016/09/23	19:00:21	51.0
106	2016/09/23	19:00:22	53.4
107	2016/09/23	19:00:23	59.1
108	2016/09/23	19:00:24	65.2
109	2016/09/23	19:00:25	67.5
110	2016/09/23	19:00:26	65.7
111	2016/09/23	19:00:27	57.6
112	2016/09/23	19:00:28	53.2
113	2016/09/23	19:00:29	57.7
114	2016/09/23	19:00:30	53.5
115	2016/09/23	19:00:31	56.0
116	2016/09/23	19:00:32	55.5
117	2016/09/23	19:00:33	50.4
118	2016/09/23	19:00:34	49.5
119	2016/09/23	19:00:35	50.5
120	2016/09/23	19:00:36	49.1
121	2016/09/23	19:00:37	46.7
122	2016/09/23	19:00:38	46.4
123	2016/09/23	19:00:39	47.2
124	2016/09/23	19:00:40	50.9
125	2016/09/23	19:00:41	53.5
126	2016/09/23	19:00:42	57.3
127	2016/09/23	19:00:43	63.3
128	2016/09/23	19:00:44	67.7
129	2016/09/23	19:00:45	65.8
130	2016/09/23	19:00:46	68.6
131	2016/09/23	19:00:47	64.4
132	2016/09/23	19:00:48	57.2
133	2016/09/23	19:00:49	54.6
134	2016/09/23	19:00:50	55.2
135	2016/09/23	19:00:51	56.0
136	2016/09/23	19:00:52	59.0
137	2016/09/23	19:00:53	62.5
138	2016/09/23	19:00:54	66.2
139	2016/09/23	19:00:55	68.5
140	2016/09/23	19:00:56	67.5
141	2016/09/23	19:00:57	66.9
142	2016/09/23	19:00:58	61.8
143	2016/09/23	19:00:59	60.1
144	2016/09/23	19:01:00	58.4
145	2016/09/23	19:01:01	59.9
146	2016/09/23	19:01:02	66.3
147	2016/09/23	19:01:03	67.6
148	2016/09/23	19:01:04	66.7
149	2016/09/23	19:01:05	62.6
150	2016/09/23	19:01:06	60.7
151	2016/09/23	19:01:07	58.6
152	2016/09/23	19:01:08	57.1
153	2016/09/23	19:01:09	56.2
154	2016/09/23	19:01:10	54.7
155	2016/09/23	19:01:11	53.4
156	2016/09/23	19:01:12	52.4
157	2016/09/23	19:01:13	57.4
158	2016/09/23	19:01:14	51.8
159	2016/09/23	19:01:15	47.0
160	2016/09/23	19:01:16	44.2
161	2016/09/23	19:01:17	42.6
162	2016/09/23	19:01:18	52.9
163	2016/09/23	19:01:19	40.6
164	2016/09/23	19:01:20	40.9
165	2016/09/23	19:01:21	41.7
166	2016/09/23	19:01:22	41.4
167	2016/09/23	19:01:23	43.2
168	2016/09/23	19:01:24	43.5
169	2016/09/23	19:01:25	43.8
170	2016/09/23	19:01:26	42.7
171	2016/09/23	19:01:27	42.0
172	2016/09/23	19:01:28	42.1
173	2016/09/23	19:01:29	42.2
174	2016/09/23	19:01:30	42.6
175	2016/09/23	19:01:31	42.4
176	2016/09/23	19:01:32	43.1
177	2016/09/23	19:01:33	44.8
178	2016/09/23	19:01:34	45.6
179	2016/09/23	19:01:35	46.4
180	2016/09/23	19:01:36	49.7
181	2016/09/23	19:01:37	56.8
182	2016/09/23	19:01:38	61.7
183	2016/09/23	19:01:39	65.8
184	2016/09/23	19:01:40	64.4

185	2016/09/23	19:01:41	55.5
186	2016/09/23	19:01:42	50.4
187	2016/09/23	19:01:43	46.2
188	2016/09/23	19:01:44	44.6
189	2016/09/23	19:01:45	44.9
190	2016/09/23	19:01:46	45.6
191	2016/09/23	19:01:47	45.2
192	2016/09/23	19:01:48	45.6
193	2016/09/23	19:01:49	44.0
194	2016/09/23	19:01:50	41.6
195	2016/09/23	19:01:51	41.0
196	2016/09/23	19:01:52	41.5
197	2016/09/23	19:01:53	43.2
198	2016/09/23	19:01:54	41.5
199	2016/09/23	19:01:55	42.7
200	2016/09/23	19:01:56	44.6
201	2016/09/23	19:01:57	46.1
202	2016/09/23	19:01:58	48.6
203	2016/09/23	19:01:59	54.4
204	2016/09/23	19:02:00	63.6
205	2016/09/23	19:02:01	72.1
206	2016/09/23	19:02:02	79.0
207	2016/09/23	19:02:03	70.1
208	2016/09/23	19:02:04	66.9
209	2016/09/23	19:02:05	69.3
210	2016/09/23	19:02:06	68.3
211	2016/09/23	19:02:07	70.8
212	2016/09/23	19:02:08	73.5
213	2016/09/23	19:02:09	69.8
214	2016/09/23	19:02:10	63.1
215	2016/09/23	19:02:11	59.4
216	2016/09/23	19:02:12	56.5
217	2016/09/23	19:02:13	56.5
218	2016/09/23	19:02:14	58.4
219	2016/09/23	19:02:15	63.0
220	2016/09/23	19:02:16	68.0
221	2016/09/23	19:02:17	67.0
222	2016/09/23	19:02:18	65.0
223	2016/09/23	19:02:19	58.5
224	2016/09/23	19:02:20	54.1
225	2016/09/23	19:02:21	52.7
226	2016/09/23	19:02:22	50.5
227	2016/09/23	19:02:23	49.6
228	2016/09/23	19:02:24	49.6
229	2016/09/23	19:02:25	50.2
230	2016/09/23	19:02:26	49.8
231	2016/09/23	19:02:27	53.0
232	2016/09/23	19:02:28	50.9
233	2016/09/23	19:02:29	51.6
234	2016/09/23	19:02:30	53.4
235	2016/09/23	19:02:31	58.0
236	2016/09/23	19:02:32	64.6
237	2016/09/23	19:02:33	67.9
238	2016/09/23	19:02:34	64.4
239	2016/09/23	19:02:35	56.3
240	2016/09/23	19:02:36	51.1
241	2016/09/23	19:02:37	52.5
242	2016/09/23	19:02:38	57.9
243	2016/09/23	19:02:39	63.3
244	2016/09/23	19:02:40	67.3
245	2016/09/23	19:02:41	67.3
246	2016/09/23	19:02:42	65.4
247	2016/09/23	19:02:43	64.4
248	2016/09/23	19:02:44	63.4
249	2016/09/23	19:02:45	60.9
250	2016/09/23	19:02:46	56.9
251	2016/09/23	19:02:47	57.6
252	2016/09/23	19:02:48	57.0
253	2016/09/23	19:02:49	56.0
254	2016/09/23	19:02:50	54.7
255	2016/09/23	19:02:51	53.0
256	2016/09/23	19:02:52	54.1
257	2016/09/23	19:02:53	56.2
258	2016/09/23	19:02:54	54.9
259	2016/09/23	19:02:55	55.0
260	2016/09/23	19:02:56	60.4
261	2016/09/23	19:02:57	63.4
262	2016/09/23	19:02:58	66.4
263	2016/09/23	19:02:59	65.4
264	2016/09/23	19:03:00	60.3
265	2016/09/23	19:03:01	56.2
266	2016/09/23	19:03:02	55.0
267	2016/09/23	19:03:03	56.5
268	2016/09/23	19:03:04	55.5
269	2016/09/23	19:03:05	53.5
270	2016/09/23	19:03:06	51.4
271	2016/09/23	19:03:07	50.3
272	2016/09/23	19:03:08	52.3
273	2016/09/23	19:03:09	54.1
274	2016/09/23	19:03:10	51.0
275	2016/09/23	19:03:11	49.5
276	2016/09/23	19:03:12	48.8
277	2016/09/23	19:03:13	50.6
278	2016/09/23	19:03:14	54.8
279	2016/09/23	19:03:15	59.7
280	2016/09/23	19:03:16	65.3
281	2016/09/23	19:03:17	66.5
282	2016/09/23	19:03:18	62.3
283	2016/09/23	19:03:19	56.1

284	2016/09/23	19:03:20	56.0
285	2016/09/23	19:03:21	58.1
286	2016/09/23	19:03:22	53.0
287	2016/09/23	19:03:23	51.7
288	2016/09/23	19:03:24	51.1
289	2016/09/23	19:03:25	52.0
290	2016/09/23	19:03:26	49.7
291	2016/09/23	19:03:27	52.1
292	2016/09/23	19:03:28	46.5
293	2016/09/23	19:03:29	46.7
294	2016/09/23	19:03:30	43.4
295	2016/09/23	19:03:31	43.9
296	2016/09/23	19:03:32	43.6
297	2016/09/23	19:03:33	42.5
298	2016/09/23	19:03:34	43.1
299	2016/09/23	19:03:35	44.8
300	2016/09/23	19:03:36	47.0
301	2016/09/23	19:03:37	45.4
302	2016/09/23	19:03:38	46.2
303	2016/09/23	19:03:39	45.8
304	2016/09/23	19:03:40	46.4
305	2016/09/23	19:03:41	46.2
306	2016/09/23	19:03:42	47.4
307	2016/09/23	19:03:43	48.5
308	2016/09/23	19:03:44	50.5
309	2016/09/23	19:03:45	52.9
310	2016/09/23	19:03:46	53.5
311	2016/09/23	19:03:47	57.0
312	2016/09/23	19:03:48	59.2
313	2016/09/23	19:03:49	64.2
314	2016/09/23	19:03:50	67.2
315	2016/09/23	19:03:51	69.5
316	2016/09/23	19:03:52	71.4
317	2016/09/23	19:03:53	71.2
318	2016/09/23	19:03:54	71.0
319	2016/09/23	19:03:55	73.2
320	2016/09/23	19:03:56	71.1
321	2016/09/23	19:03:57	70.3
322	2016/09/23	19:03:58	68.0
323	2016/09/23	19:03:59	62.4
324	2016/09/23	19:04:00	58.5
325	2016/09/23	19:04:01	62.3
326	2016/09/23	19:04:02	66.1
327	2016/09/23	19:04:03	69.2
328	2016/09/23	19:04:04	68.4
329	2016/09/23	19:04:05	66.8
330	2016/09/23	19:04:06	65.4
331	2016/09/23	19:04:07	68.5
332	2016/09/23	19:04:08	67.6
333	2016/09/23	19:04:09	66.2
334	2016/09/23	19:04:10	61.3
335	2016/09/23	19:04:11	60.3
336	2016/09/23	19:04:12	66.9
337	2016/09/23	19:04:13	66.6
338	2016/09/23	19:04:14	61.4
339	2016/09/23	19:04:15	53.8
340	2016/09/23	19:04:16	49.6
341	2016/09/23	19:04:17	48.6
342	2016/09/23	19:04:18	46.2
343	2016/09/23	19:04:19	45.1
344	2016/09/23	19:04:20	44.5
345	2016/09/23	19:04:21	42.4
346	2016/09/23	19:04:22	45.7
347	2016/09/23	19:04:23	39.6
348	2016/09/23	19:04:24	40.6
349	2016/09/23	19:04:25	39.3
350	2016/09/23	19:04:26	39.6
351	2016/09/23	19:04:27	40.2
352	2016/09/23	19:04:28	41.4
353	2016/09/23	19:04:29	43.0
354	2016/09/23	19:04:30	41.3
355	2016/09/23	19:04:31	42.3
356	2016/09/23	19:04:32	41.1
357	2016/09/23	19:04:33	41.4
358	2016/09/23	19:04:34	42.3
359	2016/09/23	19:04:35	42.7
360	2016/09/23	19:04:36	44.3
361	2016/09/23	19:04:37	47.1
362	2016/09/23	19:04:38	47.1
363	2016/09/23	19:04:39	48.9
364	2016/09/23	19:04:40	53.2
365	2016/09/23	19:04:41	57.8
366	2016/09/23	19:04:42	63.0
367	2016/09/23	19:04:43	68.6
368	2016/09/23	19:04:44	67.4
369	2016/09/23	19:04:45	66.4
370	2016/09/23	19:04:46	61.9
371	2016/09/23	19:04:47	55.5
372	2016/09/23	19:04:48	54.7
373	2016/09/23	19:04:49	52.0
374	2016/09/23	19:04:50	51.0
375	2016/09/23	19:04:51	49.9
376	2016/09/23	19:04:52	51.1
377	2016/09/23	19:04:53	52.2
378	2016/09/23	19:04:54	57.0
379	2016/09/23	19:04:55	62.5
380	2016/09/23	19:04:56	66.0
381	2016/09/23	19:04:57	67.0
382	2016/09/23	19:04:58	67.2

383	2016/09/23	19:04:59	67.3
384	2016/09/23	19:05:00	65.2
385	2016/09/23	19:05:01	63.2
386	2016/09/23	19:05:02	58.8
387	2016/09/23	19:05:03	57.5
388	2016/09/23	19:05:04	55.0
389	2016/09/23	19:05:05	56.0
390	2016/09/23	19:05:06	60.3
391	2016/09/23	19:05:07	67.9
392	2016/09/23	19:05:08	69.0
393	2016/09/23	19:05:09	63.7
394	2016/09/23	19:05:10	59.0
395	2016/09/23	19:05:11	58.6
396	2016/09/23	19:05:12	56.6
397	2016/09/23	19:05:13	54.4
398	2016/09/23	19:05:14	53.1
399	2016/09/23	19:05:15	50.3
400	2016/09/23	19:05:16	50.9
401	2016/09/23	19:05:17	56.1
402	2016/09/23	19:05:18	50.7
403	2016/09/23	19:05:19	49.1
404	2016/09/23	19:05:20	47.8
405	2016/09/23	19:05:21	48.9
406	2016/09/23	19:05:22	52.0
407	2016/09/23	19:05:23	55.7
408	2016/09/23	19:05:24	61.5
409	2016/09/23	19:05:25	63.5
410	2016/09/23	19:05:26	65.6
411	2016/09/23	19:05:27	63.8
412	2016/09/23	19:05:28	59.7
413	2016/09/23	19:05:29	56.3
414	2016/09/23	19:05:30	55.3
415	2016/09/23	19:05:31	57.2
416	2016/09/23	19:05:32	58.3
417	2016/09/23	19:05:33	59.1
418	2016/09/23	19:05:34	64.3
419	2016/09/23	19:05:35	65.9
420	2016/09/23	19:05:36	66.8
421	2016/09/23	19:05:37	73.6
422	2016/09/23	19:05:38	75.3
423	2016/09/23	19:05:39	74.1
424	2016/09/23	19:05:40	74.8
425	2016/09/23	19:05:41	68.6
426	2016/09/23	19:05:42	68.6
427	2016/09/23	19:05:43	70.4
428	2016/09/23	19:05:44	69.7
429	2016/09/23	19:05:45	67.0
430	2016/09/23	19:05:46	63.6
431	2016/09/23	19:05:47	65.8
432	2016/09/23	19:05:48	67.4
433	2016/09/23	19:05:49	65.1
434	2016/09/23	19:05:50	62.3
435	2016/09/23	19:05:51	62.0
436	2016/09/23	19:05:52	64.6
437	2016/09/23	19:05:53	62.7
438	2016/09/23	19:05:54	59.1
439	2016/09/23	19:05:55	56.5
440	2016/09/23	19:05:56	55.4
441	2016/09/23	19:05:57	55.0
442	2016/09/23	19:05:58	55.7
443	2016/09/23	19:05:59	55.9
444	2016/09/23	19:06:00	59.8
445	2016/09/23	19:06:01	65.5
446	2016/09/23	19:06:02	64.6
447	2016/09/23	19:06:03	61.9
448	2016/09/23	19:06:04	54.9
449	2016/09/23	19:06:05	50.7
450	2016/09/23	19:06:06	48.4
451	2016/09/23	19:06:07	48.4
452	2016/09/23	19:06:08	50.3
453	2016/09/23	19:06:09	47.2
454	2016/09/23	19:06:10	49.8
455	2016/09/23	19:06:11	45.8
456	2016/09/23	19:06:12	47.2
457	2016/09/23	19:06:13	47.9
458	2016/09/23	19:06:14	48.0
459	2016/09/23	19:06:15	47.1
460	2016/09/23	19:06:16	47.5
461	2016/09/23	19:06:17	48.8
462	2016/09/23	19:06:18	49.3
463	2016/09/23	19:06:19	50.1
464	2016/09/23	19:06:20	55.4
465	2016/09/23	19:06:21	56.5
466	2016/09/23	19:06:22	62.5
467	2016/09/23	19:06:23	68.0
468	2016/09/23	19:06:24	69.6
469	2016/09/23	19:06:25	69.5
470	2016/09/23	19:06:26	65.7
471	2016/09/23	19:06:27	56.6
472	2016/09/23	19:06:28	52.3
473	2016/09/23	19:06:29	50.0
474	2016/09/23	19:06:30	47.8
475	2016/09/23	19:06:31	46.8
476	2016/09/23	19:06:32	45.8
477	2016/09/23	19:06:33	44.6
478	2016/09/23	19:06:34	46.4
479	2016/09/23	19:06:35	46.8
480	2016/09/23	19:06:36	50.2
481	2016/09/23	19:06:37	55.5

482	2016/09/23	19:06:38	59.4
483	2016/09/23	19:06:39	64.2
484	2016/09/23	19:06:40	66.7
485	2016/09/23	19:06:41	64.0
486	2016/09/23	19:06:42	66.5
487	2016/09/23	19:06:43	65.0
488	2016/09/23	19:06:44	60.6
489	2016/09/23	19:06:45	56.6
490	2016/09/23	19:06:46	53.7
491	2016/09/23	19:06:47	53.6
492	2016/09/23	19:06:48	54.3
493	2016/09/23	19:06:49	56.2
494	2016/09/23	19:06:50	58.7
495	2016/09/23	19:06:51	64.6
496	2016/09/23	19:06:52	65.6
497	2016/09/23	19:06:53	65.8
498	2016/09/23	19:06:54	63.3
499	2016/09/23	19:06:55	59.1
500	2016/09/23	19:06:56	58.0
501	2016/09/23	19:06:57	60.1
502	2016/09/23	19:06:58	61.6
503	2016/09/23	19:06:59	65.5
504	2016/09/23	19:07:00	66.5
505	2016/09/23	19:07:01	64.1
506	2016/09/23	19:07:02	60.1
507	2016/09/23	19:07:03	59.4
508	2016/09/23	19:07:04	57.1
509	2016/09/23	19:07:05	56.1
510	2016/09/23	19:07:06	53.9
511	2016/09/23	19:07:07	53.4
512	2016/09/23	19:07:08	54.7
513	2016/09/23	19:07:09	53.4
514	2016/09/23	19:07:10	53.1
515	2016/09/23	19:07:11	54.1
516	2016/09/23	19:07:12	56.7
517	2016/09/23	19:07:13	61.8
518	2016/09/23	19:07:14	71.2
519	2016/09/23	19:07:15	71.4
520	2016/09/23	19:07:16	63.6
521	2016/09/23	19:07:17	58.8
522	2016/09/23	19:07:18	59.6
523	2016/09/23	19:07:19	56.0
524	2016/09/23	19:07:20	54.1
525	2016/09/23	19:07:21	59.2
526	2016/09/23	19:07:22	62.6
527	2016/09/23	19:07:23	64.6
528	2016/09/23	19:07:24	65.1
529	2016/09/23	19:07:25	64.1
530	2016/09/23	19:07:26	67.6
531	2016/09/23	19:07:27	70.9
532	2016/09/23	19:07:28	73.1
533	2016/09/23	19:07:29	78.9
534	2016/09/23	19:07:30	73.9
535	2016/09/23	19:07:31	66.2
536	2016/09/23	19:07:32	60.1
537	2016/09/23	19:07:33	54.9
538	2016/09/23	19:07:34	51.5
539	2016/09/23	19:07:35	52.2
540	2016/09/23	19:07:36	51.6
541	2016/09/23	19:07:37	49.9
542	2016/09/23	19:07:38	50.6
543	2016/09/23	19:07:39	52.6
544	2016/09/23	19:07:40	52.4
545	2016/09/23	19:07:41	55.8
546	2016/09/23	19:07:42	58.2
547	2016/09/23	19:07:43	60.0
548	2016/09/23	19:07:44	64.0
549	2016/09/23	19:07:45	68.6
550	2016/09/23	19:07:46	68.7
551	2016/09/23	19:07:47	66.2
552	2016/09/23	19:07:48	69.6
553	2016/09/23	19:07:49	76.8
554	2016/09/23	19:07:50	74.6
555	2016/09/23	19:07:51	70.1
556	2016/09/23	19:07:52	66.2
557	2016/09/23	19:07:53	66.0
558	2016/09/23	19:07:54	62.4
559	2016/09/23	19:07:55	64.5
560	2016/09/23	19:07:56	61.6
561	2016/09/23	19:07:57	61.7
562	2016/09/23	19:07:58	64.5
563	2016/09/23	19:07:59	68.6
564	2016/09/23	19:08:00	72.2
565	2016/09/23	19:08:01	66.9
566	2016/09/23	19:08:02	57.1
567	2016/09/23	19:08:03	53.5
568	2016/09/23	19:08:04	52.3
569	2016/09/23	19:08:05	51.1
570	2016/09/23	19:08:06	55.7
571	2016/09/23	19:08:07	59.8
572	2016/09/23	19:08:08	64.4
573	2016/09/23	19:08:09	66.2
574	2016/09/23	19:08:10	63.4
575	2016/09/23	19:08:11	57.2
576	2016/09/23	19:08:12	59.3
577	2016/09/23	19:08:13	67.1
578	2016/09/23	19:08:14	69.1
579	2016/09/23	19:08:15	65.3
580	2016/09/23	19:08:16	57.0

581	2016/09/23	19:08:17	51.4
582	2016/09/23	19:08:18	50.1
583	2016/09/23	19:08:19	49.4
584	2016/09/23	19:08:20	49.5
585	2016/09/23	19:08:21	54.5
586	2016/09/23	19:08:22	55.6
587	2016/09/23	19:08:23	52.6
588	2016/09/23	19:08:24	56.8
589	2016/09/23	19:08:25	61.8
590	2016/09/23	19:08:26	67.5
591	2016/09/23	19:08:27	66.3
592	2016/09/23	19:08:28	63.8
593	2016/09/23	19:08:29	60.0
594	2016/09/23	19:08:30	58.5
595	2016/09/23	19:08:31	56.8
596	2016/09/23	19:08:32	55.9
597	2016/09/23	19:08:33	57.4
598	2016/09/23	19:08:34	56.8
599	2016/09/23	19:08:35	53.9
600	2016/09/23	19:08:36	53.2
601	2016/09/23	19:08:37	51.4
602	2016/09/23	19:08:38	52.3
603	2016/09/23	19:08:39	54.3
604	2016/09/23	19:08:40	61.5
605	2016/09/23	19:08:41	64.5
606	2016/09/23	19:08:42	65.2
607	2016/09/23	19:08:43	65.8
608	2016/09/23	19:08:44	61.3
609	2016/09/23	19:08:45	59.9
610	2016/09/23	19:08:46	58.8
611	2016/09/23	19:08:47	56.3
612	2016/09/23	19:08:48	59.2
613	2016/09/23	19:08:49	63.9
614	2016/09/23	19:08:50	67.3
615	2016/09/23	19:08:51	66.1
616	2016/09/23	19:08:52	65.0
617	2016/09/23	19:08:53	67.0
618	2016/09/23	19:08:54	68.5
619	2016/09/23	19:08:55	67.4
620	2016/09/23	19:08:56	59.1
621	2016/09/23	19:08:57	56.7
622	2016/09/23	19:08:58	53.6
623	2016/09/23	19:08:59	55.6
624	2016/09/23	19:09:00	55.5
625	2016/09/23	19:09:01	53.4
626	2016/09/23	19:09:02	55.5
627	2016/09/23	19:09:03	59.0
628	2016/09/23	19:09:04	64.1
629	2016/09/23	19:09:05	66.6
630	2016/09/23	19:09:06	65.4
631	2016/09/23	19:09:07	58.9
632	2016/09/23	19:09:08	53.4
633	2016/09/23	19:09:09	50.5
634	2016/09/23	19:09:10	50.8
635	2016/09/23	19:09:11	47.7
636	2016/09/23	19:09:12	48.8
637	2016/09/23	19:09:13	50.6
638	2016/09/23	19:09:14	52.5
639	2016/09/23	19:09:15	56.7
640	2016/09/23	19:09:16	57.7
641	2016/09/23	19:09:17	64.1
642	2016/09/23	19:09:18	66.4
643	2016/09/23	19:09:19	68.5
644	2016/09/23	19:09:20	68.2
645	2016/09/23	19:09:21	63.0
646	2016/09/23	19:09:22	55.7
647	2016/09/23	19:09:23	52.9
648	2016/09/23	19:09:24	52.6
649	2016/09/23	19:09:25	53.4
650	2016/09/23	19:09:26	53.7
651	2016/09/23	19:09:27	55.8
652	2016/09/23	19:09:28	58.3
653	2016/09/23	19:09:29	65.6
654	2016/09/23	19:09:30	72.6
655	2016/09/23	19:09:31	73.9
656	2016/09/23	19:09:32	68.1
657	2016/09/23	19:09:33	59.2
658	2016/09/23	19:09:34	54.9
659	2016/09/23	19:09:35	53.0
660	2016/09/23	19:09:36	54.2
661	2016/09/23	19:09:37	62.4
662	2016/09/23	19:09:38	66.9
663	2016/09/23	19:09:39	67.0
664	2016/09/23	19:09:40	59.2
665	2016/09/23	19:09:41	53.0
666	2016/09/23	19:09:42	47.9
667	2016/09/23	19:09:43	46.8
668	2016/09/23	19:09:44	46.2
669	2016/09/23	19:09:45	46.1
670	2016/09/23	19:09:46	47.4
671	2016/09/23	19:09:47	50.4
672	2016/09/23	19:09:48	53.3
673	2016/09/23	19:09:49	57.5
674	2016/09/23	19:09:50	65.0
675	2016/09/23	19:09:51	67.4
676	2016/09/23	19:09:52	65.4
677	2016/09/23	19:09:53	63.4
678	2016/09/23	19:09:54	67.4
679	2016/09/23	19:09:55	69.4

680	2016/09/23	19:09:56	69.5
681	2016/09/23	19:09:57	66.4
682	2016/09/23	19:09:58	62.9
683	2016/09/23	19:09:59	58.2
684	2016/09/23	19:10:00	57.6
685	2016/09/23	19:10:01	58.0
686	2016/09/23	19:10:02	56.5
687	2016/09/23	19:10:03	55.6
688	2016/09/23	19:10:04	55.2
689	2016/09/23	19:10:05	53.5
690	2016/09/23	19:10:06	54.6
691	2016/09/23	19:10:07	51.8
692	2016/09/23	19:10:08	48.1
693	2016/09/23	19:10:09	48.3
694	2016/09/23	19:10:10	48.4
695	2016/09/23	19:10:11	50.0
696	2016/09/23	19:10:12	51.8
697	2016/09/23	19:10:13	53.8
698	2016/09/23	19:10:14	57.6
699	2016/09/23	19:10:15	65.6
700	2016/09/23	19:10:16	70.0
701	2016/09/23	19:10:17	68.5
702	2016/09/23	19:10:18	69.5
703	2016/09/23	19:10:19	67.0
704	2016/09/23	19:10:20	63.5
705	2016/09/23	19:10:21	56.8
706	2016/09/23	19:10:22	55.9
707	2016/09/23	19:10:23	55.2
708	2016/09/23	19:10:24	54.0
709	2016/09/23	19:10:25	53.1
710	2016/09/23	19:10:26	53.6
711	2016/09/23	19:10:27	52.9
712	2016/09/23	19:10:28	53.5
713	2016/09/23	19:10:29	50.8
714	2016/09/23	19:10:30	49.5
715	2016/09/23	19:10:31	50.1
716	2016/09/23	19:10:32	51.7
717	2016/09/23	19:10:33	53.4
718	2016/09/23	19:10:34	56.6
719	2016/09/23	19:10:35	61.9
720	2016/09/23	19:10:36	70.7
721	2016/09/23	19:10:37	73.5
722	2016/09/23	19:10:38	70.1
723	2016/09/23	19:10:39	60.0
724	2016/09/23	19:10:40	56.3
725	2016/09/23	19:10:41	61.3
726	2016/09/23	19:10:42	67.5
727	2016/09/23	19:10:43	68.5
728	2016/09/23	19:10:44	62.1
729	2016/09/23	19:10:45	57.5
730	2016/09/23	19:10:46	53.1
731	2016/09/23	19:10:47	51.9
732	2016/09/23	19:10:48	49.6
733	2016/09/23	19:10:49	45.8
734	2016/09/23	19:10:50	44.5
735	2016/09/23	19:10:51	44.9
736	2016/09/23	19:10:52	44.5
737	2016/09/23	19:10:53	45.2
738	2016/09/23	19:10:54	45.0
739	2016/09/23	19:10:55	46.6
740	2016/09/23	19:10:56	47.8
741	2016/09/23	19:10:57	48.4
742	2016/09/23	19:10:58	51.6
743	2016/09/23	19:10:59	52.0
744	2016/09/23	19:11:00	53.5
745	2016/09/23	19:11:01	55.5
746	2016/09/23	19:11:02	59.4
747	2016/09/23	19:11:03	64.4
748	2016/09/23	19:11:04	67.3
749	2016/09/23	19:11:05	64.8
750	2016/09/23	19:11:06	60.8
751	2016/09/23	19:11:07	56.3
752	2016/09/23	19:11:08	52.1
753	2016/09/23	19:11:09	50.1
754	2016/09/23	19:11:10	48.7
755	2016/09/23	19:11:11	48.2
756	2016/09/23	19:11:12	48.1
757	2016/09/23	19:11:13	48.5
758	2016/09/23	19:11:14	49.3
759	2016/09/23	19:11:15	49.4
760	2016/09/23	19:11:16	51.6
761	2016/09/23	19:11:17	52.4
762	2016/09/23	19:11:18	53.8
763	2016/09/23	19:11:19	59.1
764	2016/09/23	19:11:20	61.2
765	2016/09/23	19:11:21	69.4
766	2016/09/23	19:11:22	71.6
767	2016/09/23	19:11:23	68.8
768	2016/09/23	19:11:24	61.7
769	2016/09/23	19:11:25	56.6
770	2016/09/23	19:11:26	53.6
771	2016/09/23	19:11:27	52.4
772	2016/09/23	19:11:28	53.4
773	2016/09/23	19:11:29	60.2
774	2016/09/23	19:11:30	65.9
775	2016/09/23	19:11:31	66.5
776	2016/09/23	19:11:32	64.5
777	2016/09/23	19:11:33	57.2
778	2016/09/23	19:11:34	53.2

779	2016/09/23	19:11:35	52.2
780	2016/09/23	19:11:36	50.4
781	2016/09/23	19:11:37	49.3
782	2016/09/23	19:11:38	50.3
783	2016/09/23	19:11:39	50.7
784	2016/09/23	19:11:40	52.0
785	2016/09/23	19:11:41	53.4
786	2016/09/23	19:11:42	55.8
787	2016/09/23	19:11:43	60.9
788	2016/09/23	19:11:44	69.5
789	2016/09/23	19:11:45	69.4
790	2016/09/23	19:11:46	67.1
791	2016/09/23	19:11:47	65.2
792	2016/09/23	19:11:48	64.5
793	2016/09/23	19:11:49	62.7
794	2016/09/23	19:11:50	58.4
795	2016/09/23	19:11:51	54.2
796	2016/09/23	19:11:52	57.1
797	2016/09/23	19:11:53	58.3
798	2016/09/23	19:11:54	55.7
799	2016/09/23	19:11:55	54.9
800	2016/09/23	19:11:56	54.3
801	2016/09/23	19:11:57	50.0
802	2016/09/23	19:11:58	48.8
803	2016/09/23	19:11:59	46.8
804	2016/09/23	19:12:00	46.7
805	2016/09/23	19:12:01	46.2
806	2016/09/23	19:12:02	48.4
807	2016/09/23	19:12:03	51.1
808	2016/09/23	19:12:04	50.7
809	2016/09/23	19:12:05	54.6
810	2016/09/23	19:12:06	57.6
811	2016/09/23	19:12:07	64.9
812	2016/09/23	19:12:08	67.9
813	2016/09/23	19:12:09	67.6
814	2016/09/23	19:12:10	65.6
815	2016/09/23	19:12:11	62.3
816	2016/09/23	19:12:12	65.5
817	2016/09/23	19:12:13	67.7
818	2016/09/23	19:12:14	66.2
819	2016/09/23	19:12:15	67.4
820	2016/09/23	19:12:16	69.1
821	2016/09/23	19:12:17	61.7
822	2016/09/23	19:12:18	55.1
823	2016/09/23	19:12:19	52.1
824	2016/09/23	19:12:20	50.7
825	2016/09/23	19:12:21	49.9
826	2016/09/23	19:12:22	50.6
827	2016/09/23	19:12:23	53.1
828	2016/09/23	19:12:24	49.7
829	2016/09/23	19:12:25	50.5
830	2016/09/23	19:12:26	49.8
831	2016/09/23	19:12:27	50.7
832	2016/09/23	19:12:28	52.8
833	2016/09/23	19:12:29	51.1
834	2016/09/23	19:12:30	50.6
835	2016/09/23	19:12:31	52.4
836	2016/09/23	19:12:32	56.0
837	2016/09/23	19:12:33	60.6
838	2016/09/23	19:12:34	67.3
839	2016/09/23	19:12:35	68.6
840	2016/09/23	19:12:36	70.0
841	2016/09/23	19:12:37	70.1
842	2016/09/23	19:12:38	61.9
843	2016/09/23	19:12:39	56.3
844	2016/09/23	19:12:40	51.6
845	2016/09/23	19:12:41	49.6
846	2016/09/23	19:12:42	51.3
847	2016/09/23	19:12:43	51.3
848	2016/09/23	19:12:44	49.4
849	2016/09/23	19:12:45	47.1
850	2016/09/23	19:12:46	44.9
851	2016/09/23	19:12:47	44.7
852	2016/09/23	19:12:48	41.1
853	2016/09/23	19:12:49	43.1
854	2016/09/23	19:12:50	44.1
855	2016/09/23	19:12:51	44.0
856	2016/09/23	19:12:52	44.6
857	2016/09/23	19:12:53	42.5
858	2016/09/23	19:12:54	41.2
859	2016/09/23	19:12:55	40.7
860	2016/09/23	19:12:56	40.8
861	2016/09/23	19:12:57	41.0
862	2016/09/23	19:12:58	39.4
863	2016/09/23	19:12:59	42.9
864	2016/09/23	19:13:00	39.7
865	2016/09/23	19:13:01	41.3
866	2016/09/23	19:13:02	40.6
867	2016/09/23	19:13:03	40.8
868	2016/09/23	19:13:04	40.5
869	2016/09/23	19:13:05	41.6
870	2016/09/23	19:13:06	41.6
871	2016/09/23	19:13:07	41.8
872	2016/09/23	19:13:08	42.4
873	2016/09/23	19:13:09	42.6
874	2016/09/23	19:13:10	42.9
875	2016/09/23	19:13:11	42.4
876	2016/09/23	19:13:12	43.3
877	2016/09/23	19:13:13	44.1

878	2016/09/23	19:13:14	47.3
879	2016/09/23	19:13:15	49.8
880	2016/09/23	19:13:16	50.5
881	2016/09/23	19:13:17	54.3
882	2016/09/23	19:13:18	59.3
883	2016/09/23	19:13:19	65.0
884	2016/09/23	19:13:20	69.0
885	2016/09/23	19:13:21	68.0
886	2016/09/23	19:13:22	65.5
887	2016/09/23	19:13:23	61.1
888	2016/09/23	19:13:24	55.2
889	2016/09/23	19:13:25	54.0
890	2016/09/23	19:13:26	57.9
891	2016/09/23	19:13:27	62.8
892	2016/09/23	19:13:28	63.4
893	2016/09/23	19:13:29	64.9
894	2016/09/23	19:13:30	67.8
895	2016/09/23	19:13:31	70.2
896	2016/09/23	19:13:32	71.6
897	2016/09/23	19:13:33	67.8
898	2016/09/23	19:13:34	63.3
899	2016/09/23	19:13:35	57.8
900	2016/09/23	19:13:36	55.0

Freq Weight : A
Time Weight : FAST
Level Range : 40-100
Max dB : 79.2 - 2016/09/23 18:16:53
Level Range : 40-100
SEL : 94.0
Leq : 64.5

No. s	Date Time	(dB)
1	2016/09/23 18:11:57	59.2
2	2016/09/23 18:11:58	58.7
3	2016/09/23 18:11:59	58.0
4	2016/09/23 18:12:00	58.7
5	2016/09/23 18:12:01	60.2
6	2016/09/23 18:12:02	63.2
7	2016/09/23 18:12:03	69.2
8	2016/09/23 18:12:04	72.6
9	2016/09/23 18:12:05	71.1
10	2016/09/23 18:12:06	67.0
11	2016/09/23 18:12:07	68.5
12	2016/09/23 18:12:08	74.2
13	2016/09/23 18:12:09	74.1
14	2016/09/23 18:12:10	69.3
15	2016/09/23 18:12:11	69.7
16	2016/09/23 18:12:12	70.7
17	2016/09/23 18:12:13	72.5
18	2016/09/23 18:12:14	72.4
19	2016/09/23 18:12:15	71.7
20	2016/09/23 18:12:16	68.5
21	2016/09/23 18:12:17	64.7
22	2016/09/23 18:12:18	60.7
23	2016/09/23 18:12:19	57.4
24	2016/09/23 18:12:20	60.7
25	2016/09/23 18:12:21	62.5
26	2016/09/23 18:12:22	64.6
27	2016/09/23 18:12:23	61.7
28	2016/09/23 18:12:24	61.6
29	2016/09/23 18:12:25	64.8
30	2016/09/23 18:12:26	69.1
31	2016/09/23 18:12:27	73.9
32	2016/09/23 18:12:28	73.5
33	2016/09/23 18:12:29	67.5
34	2016/09/23 18:12:30	63.3
35	2016/09/23 18:12:31	61.6
36	2016/09/23 18:12:32	59.7
37	2016/09/23 18:12:33	57.4
38	2016/09/23 18:12:34	57.0
39	2016/09/23 18:12:35	57.4
40	2016/09/23 18:12:36	56.0
41	2016/09/23 18:12:37	54.9
42	2016/09/23 18:12:38	53.8
43	2016/09/23 18:12:39	53.3
44	2016/09/23 18:12:40	60.5
45	2016/09/23 18:12:41	53.1
46	2016/09/23 18:12:42	54.0
47	2016/09/23 18:12:43	54.2
48	2016/09/23 18:12:44	55.4
49	2016/09/23 18:12:45	56.9
50	2016/09/23 18:12:46	57.7
51	2016/09/23 18:12:47	57.7
52	2016/09/23 18:12:48	61.9
53	2016/09/23 18:12:49	58.7
54	2016/09/23 18:12:50	59.7
55	2016/09/23 18:12:51	59.7
56	2016/09/23 18:12:52	59.1
57	2016/09/23 18:12:53	58.4
58	2016/09/23 18:12:54	56.7
59	2016/09/23 18:12:55	56.4
60	2016/09/23 18:12:56	57.5
61	2016/09/23 18:12:57	57.7
62	2016/09/23 18:12:58	57.7
63	2016/09/23 18:12:59	58.7
64	2016/09/23 18:13:00	61.4
65	2016/09/23 18:13:01	60.1
66	2016/09/23 18:13:02	61.3
67	2016/09/23 18:13:03	65.5
68	2016/09/23 18:13:04	71.2
69	2016/09/23 18:13:05	73.1
70	2016/09/23 18:13:06	67.4
71	2016/09/23 18:13:07	69.3
72	2016/09/23 18:13:08	73.3
73	2016/09/23 18:13:09	69.3
74	2016/09/23 18:13:10	65.9
75	2016/09/23 18:13:11	63.0
76	2016/09/23 18:13:12	63.3
77	2016/09/23 18:13:13	60.3
78	2016/09/23 18:13:14	60.6
79	2016/09/23 18:13:15	63.5
80	2016/09/23 18:13:16	70.8
81	2016/09/23 18:13:17	71.4
82	2016/09/23 18:13:18	65.0
83	2016/09/23 18:13:19	61.6
84	2016/09/23 18:13:20	61.5
85	2016/09/23 18:13:21	59.0

86	2016/09/23	18:13:22	62.0
87	2016/09/23	18:13:23	55.9
88	2016/09/23	18:13:24	55.6
89	2016/09/23	18:13:25	53.7
90	2016/09/23	18:13:26	52.4
91	2016/09/23	18:13:27	51.7
92	2016/09/23	18:13:28	52.5
93	2016/09/23	18:13:29	51.7
94	2016/09/23	18:13:30	51.8
95	2016/09/23	18:13:31	51.9
96	2016/09/23	18:13:32	55.8
97	2016/09/23	18:13:33	55.0
98	2016/09/23	18:13:34	57.1
99	2016/09/23	18:13:35	60.5
100	2016/09/23	18:13:36	60.8
101	2016/09/23	18:13:37	66.6
102	2016/09/23	18:13:38	74.4
103	2016/09/23	18:13:39	73.3
104	2016/09/23	18:13:40	66.0
105	2016/09/23	18:13:41	62.3
106	2016/09/23	18:13:42	60.3
107	2016/09/23	18:13:43	58.5
108	2016/09/23	18:13:44	58.3
109	2016/09/23	18:13:45	56.9
110	2016/09/23	18:13:46	55.5
111	2016/09/23	18:13:47	53.8
112	2016/09/23	18:13:48	53.5
113	2016/09/23	18:13:49	51.9
114	2016/09/23	18:13:50	53.1
115	2016/09/23	18:13:51	54.3
116	2016/09/23	18:13:52	55.5
117	2016/09/23	18:13:53	56.2
118	2016/09/23	18:13:54	59.1
119	2016/09/23	18:13:55	60.0
120	2016/09/23	18:13:56	60.3
121	2016/09/23	18:13:57	58.7
122	2016/09/23	18:13:58	60.0
123	2016/09/23	18:13:59	59.5
124	2016/09/23	18:14:00	59.9
125	2016/09/23	18:14:01	59.1
126	2016/09/23	18:14:02	58.4
127	2016/09/23	18:14:03	57.5
128	2016/09/23	18:14:04	57.3
129	2016/09/23	18:14:05	56.7
130	2016/09/23	18:14:06	57.8
131	2016/09/23	18:14:07	58.6
132	2016/09/23	18:14:08	58.3
133	2016/09/23	18:14:09	58.2
134	2016/09/23	18:14:10	61.6
135	2016/09/23	18:14:11	64.1
136	2016/09/23	18:14:12	67.8
137	2016/09/23	18:14:13	67.0
138	2016/09/23	18:14:14	64.4
139	2016/09/23	18:14:15	62.0
140	2016/09/23	18:14:16	59.2
141	2016/09/23	18:14:17	59.0
142	2016/09/23	18:14:18	59.9
143	2016/09/23	18:14:19	60.0
144	2016/09/23	18:14:20	62.3
145	2016/09/23	18:14:21	63.8
146	2016/09/23	18:14:22	71.6
147	2016/09/23	18:14:23	77.0
148	2016/09/23	18:14:24	73.5
149	2016/09/23	18:14:25	68.7
150	2016/09/23	18:14:26	66.9
151	2016/09/23	18:14:27	64.7
152	2016/09/23	18:14:28	66.7
153	2016/09/23	18:14:29	69.2
154	2016/09/23	18:14:30	70.9
155	2016/09/23	18:14:31	68.9
156	2016/09/23	18:14:32	65.5
157	2016/09/23	18:14:33	61.9
158	2016/09/23	18:14:34	59.6
159	2016/09/23	18:14:35	59.3
160	2016/09/23	18:14:36	61.7
161	2016/09/23	18:14:37	69.5
162	2016/09/23	18:14:38	73.1
163	2016/09/23	18:14:39	67.2
164	2016/09/23	18:14:40	63.0
165	2016/09/23	18:14:41	60.1
166	2016/09/23	18:14:42	59.3
167	2016/09/23	18:14:43	57.4
168	2016/09/23	18:14:44	58.0
169	2016/09/23	18:14:45	59.5
170	2016/09/23	18:14:46	65.5
171	2016/09/23	18:14:47	73.1
172	2016/09/23	18:14:48	73.9
173	2016/09/23	18:14:49	67.2
174	2016/09/23	18:14:50	62.6
175	2016/09/23	18:14:51	60.2
176	2016/09/23	18:14:52	58.9
177	2016/09/23	18:14:53	61.4
178	2016/09/23	18:14:54	61.2
179	2016/09/23	18:14:55	59.7
180	2016/09/23	18:14:56	60.0
181	2016/09/23	18:14:57	57.5
182	2016/09/23	18:14:58	57.2
183	2016/09/23	18:14:59	59.2
184	2016/09/23	18:15:00	55.3

185	2016/09/23	18:15:01	54.4
186	2016/09/23	18:15:02	54.4
187	2016/09/23	18:15:03	56.8
188	2016/09/23	18:15:04	57.8
189	2016/09/23	18:15:05	55.7
190	2016/09/23	18:15:06	55.4
191	2016/09/23	18:15:07	53.5
192	2016/09/23	18:15:08	53.6
193	2016/09/23	18:15:09	54.5
194	2016/09/23	18:15:10	54.0
195	2016/09/23	18:15:11	54.6
196	2016/09/23	18:15:12	56.0
197	2016/09/23	18:15:13	57.8
198	2016/09/23	18:15:14	58.7
199	2016/09/23	18:15:15	57.8
200	2016/09/23	18:15:16	57.8
201	2016/09/23	18:15:17	58.4
202	2016/09/23	18:15:18	59.4
203	2016/09/23	18:15:19	59.7
204	2016/09/23	18:15:20	59.8
205	2016/09/23	18:15:21	60.8
206	2016/09/23	18:15:22	63.6
207	2016/09/23	18:15:23	66.5
208	2016/09/23	18:15:24	71.9
209	2016/09/23	18:15:25	70.3
210	2016/09/23	18:15:26	65.1
211	2016/09/23	18:15:27	62.6
212	2016/09/23	18:15:28	60.1
213	2016/09/23	18:15:29	59.7
214	2016/09/23	18:15:30	68.8
215	2016/09/23	18:15:31	60.9
216	2016/09/23	18:15:32	61.0
217	2016/09/23	18:15:33	55.0
218	2016/09/23	18:15:34	54.6
219	2016/09/23	18:15:35	55.7
220	2016/09/23	18:15:36	55.8
221	2016/09/23	18:15:37	59.5
222	2016/09/23	18:15:38	65.4
223	2016/09/23	18:15:39	69.5
224	2016/09/23	18:15:40	68.9
225	2016/09/23	18:15:41	63.9
226	2016/09/23	18:15:42	60.5
227	2016/09/23	18:15:43	57.5
228	2016/09/23	18:15:44	56.2
229	2016/09/23	18:15:45	55.5
230	2016/09/23	18:15:46	56.5
231	2016/09/23	18:15:47	58.4
232	2016/09/23	18:15:48	61.1
233	2016/09/23	18:15:49	61.8
234	2016/09/23	18:15:50	59.6
235	2016/09/23	18:15:51	57.0
236	2016/09/23	18:15:52	56.1
237	2016/09/23	18:15:53	56.0
238	2016/09/23	18:15:54	55.6
239	2016/09/23	18:15:55	55.5
240	2016/09/23	18:15:56	55.4
241	2016/09/23	18:15:57	56.9
242	2016/09/23	18:15:58	57.6
243	2016/09/23	18:15:59	60.5
244	2016/09/23	18:16:00	60.8
245	2016/09/23	18:16:01	67.6
246	2016/09/23	18:16:02	73.3
247	2016/09/23	18:16:03	74.3
248	2016/09/23	18:16:04	69.5
249	2016/09/23	18:16:05	68.1
250	2016/09/23	18:16:06	67.5
251	2016/09/23	18:16:07	66.5
252	2016/09/23	18:16:08	64.6
253	2016/09/23	18:16:09	63.1
254	2016/09/23	18:16:10	60.8
255	2016/09/23	18:16:11	59.1
256	2016/09/23	18:16:12	56.8
257	2016/09/23	18:16:13	55.4
258	2016/09/23	18:16:14	55.1
259	2016/09/23	18:16:15	53.6
260	2016/09/23	18:16:16	53.5
261	2016/09/23	18:16:17	53.2
262	2016/09/23	18:16:18	54.4
263	2016/09/23	18:16:19	56.4
264	2016/09/23	18:16:20	57.2
265	2016/09/23	18:16:21	56.5
266	2016/09/23	18:16:22	56.6
267	2016/09/23	18:16:23	58.3
268	2016/09/23	18:16:24	61.6
269	2016/09/23	18:16:25	69.7
270	2016/09/23	18:16:26	71.4
271	2016/09/23	18:16:27	68.0
272	2016/09/23	18:16:28	65.3
273	2016/09/23	18:16:29	63.3
274	2016/09/23	18:16:30	61.9
275	2016/09/23	18:16:31	61.7
276	2016/09/23	18:16:32	61.0
277	2016/09/23	18:16:33	60.3
278	2016/09/23	18:16:34	61.7
279	2016/09/23	18:16:35	61.0
280	2016/09/23	18:16:36	60.5
281	2016/09/23	18:16:37	59.3
282	2016/09/23	18:16:38	61.0
283	2016/09/23	18:16:39	62.5

284	2016/09/23	18:16:40	66.0
285	2016/09/23	18:16:41	66.7
286	2016/09/23	18:16:42	64.5
287	2016/09/23	18:16:43	60.9
288	2016/09/23	18:16:44	59.9
289	2016/09/23	18:16:45	58.4
290	2016/09/23	18:16:46	56.0
291	2016/09/23	18:16:47	58.3
292	2016/09/23	18:16:48	62.1
293	2016/09/23	18:16:49	66.9
294	2016/09/23	18:16:50	70.7
295	2016/09/23	18:16:51	69.7
296	2016/09/23	18:16:52	76.7
297	2016/09/23	18:16:53	76.6
298	2016/09/23	18:16:54	68.0
299	2016/09/23	18:16:55	62.0
300	2016/09/23	18:16:56	61.1
301	2016/09/23	18:16:57	61.2
302	2016/09/23	18:16:58	59.6
303	2016/09/23	18:16:59	59.1
304	2016/09/23	18:17:00	59.0
305	2016/09/23	18:17:01	58.8
306	2016/09/23	18:17:02	57.7
307	2016/09/23	18:17:03	57.2
308	2016/09/23	18:17:04	56.0
309	2016/09/23	18:17:05	55.6
310	2016/09/23	18:17:06	52.9
311	2016/09/23	18:17:07	52.4
312	2016/09/23	18:17:08	52.8
313	2016/09/23	18:17:09	53.3
314	2016/09/23	18:17:10	55.3
315	2016/09/23	18:17:11	57.6
316	2016/09/23	18:17:12	58.6
317	2016/09/23	18:17:13	60.1
318	2016/09/23	18:17:14	60.5
319	2016/09/23	18:17:15	60.5
320	2016/09/23	18:17:16	58.3
321	2016/09/23	18:17:17	56.4
322	2016/09/23	18:17:18	54.8
323	2016/09/23	18:17:19	52.9
324	2016/09/23	18:17:20	52.1
325	2016/09/23	18:17:21	51.3
326	2016/09/23	18:17:22	52.7
327	2016/09/23	18:17:23	53.2
328	2016/09/23	18:17:24	55.1
329	2016/09/23	18:17:25	57.0
330	2016/09/23	18:17:26	58.6
331	2016/09/23	18:17:27	60.7
332	2016/09/23	18:17:28	60.7
333	2016/09/23	18:17:29	59.6
334	2016/09/23	18:17:30	59.1
335	2016/09/23	18:17:31	57.4
336	2016/09/23	18:17:32	56.5
337	2016/09/23	18:17:33	56.1
338	2016/09/23	18:17:34	56.8
339	2016/09/23	18:17:35	56.8
340	2016/09/23	18:17:36	58.7
341	2016/09/23	18:17:37	62.2
342	2016/09/23	18:17:38	64.6
343	2016/09/23	18:17:39	71.3
344	2016/09/23	18:17:40	72.1
345	2016/09/23	18:17:41	67.3
346	2016/09/23	18:17:42	62.2
347	2016/09/23	18:17:43	56.0
348	2016/09/23	18:17:44	54.4
349	2016/09/23	18:17:45	55.3
350	2016/09/23	18:17:46	56.3
351	2016/09/23	18:17:47	58.3
352	2016/09/23	18:17:48	62.1
353	2016/09/23	18:17:49	66.3
354	2016/09/23	18:17:50	69.8
355	2016/09/23	18:17:51	69.4
356	2016/09/23	18:17:52	65.7
357	2016/09/23	18:17:53	62.7
358	2016/09/23	18:17:54	60.3
359	2016/09/23	18:17:55	60.3
360	2016/09/23	18:17:56	60.1
361	2016/09/23	18:17:57	60.1
362	2016/09/23	18:17:58	62.2
363	2016/09/23	18:17:59	65.8
364	2016/09/23	18:18:00	67.4
365	2016/09/23	18:18:01	65.4
366	2016/09/23	18:18:02	62.7
367	2016/09/23	18:18:03	59.4
368	2016/09/23	18:18:04	56.8
369	2016/09/23	18:18:05	55.1
370	2016/09/23	18:18:06	51.7
371	2016/09/23	18:18:07	50.9
372	2016/09/23	18:18:08	51.4
373	2016/09/23	18:18:09	52.8
374	2016/09/23	18:18:10	52.0
375	2016/09/23	18:18:11	52.1
376	2016/09/23	18:18:12	50.7
377	2016/09/23	18:18:13	50.5
378	2016/09/23	18:18:14	51.0
379	2016/09/23	18:18:15	52.8
380	2016/09/23	18:18:16	54.3
381	2016/09/23	18:18:17	55.9
382	2016/09/23	18:18:18	57.6

383	2016/09/23	18:18:19	57.0
384	2016/09/23	18:18:20	56.0
385	2016/09/23	18:18:21	54.9
386	2016/09/23	18:18:22	53.6
387	2016/09/23	18:18:23	53.5
388	2016/09/23	18:18:24	54.8
389	2016/09/23	18:18:25	55.0
390	2016/09/23	18:18:26	55.5
391	2016/09/23	18:18:27	56.5
392	2016/09/23	18:18:28	57.3
393	2016/09/23	18:18:29	58.5
394	2016/09/23	18:18:30	60.0
395	2016/09/23	18:18:31	62.6
396	2016/09/23	18:18:32	69.6
397	2016/09/23	18:18:33	73.9
398	2016/09/23	18:18:34	67.7
399	2016/09/23	18:18:35	63.0
400	2016/09/23	18:18:36	60.9
401	2016/09/23	18:18:37	57.3
402	2016/09/23	18:18:38	55.7
403	2016/09/23	18:18:39	54.3
404	2016/09/23	18:18:40	54.0
405	2016/09/23	18:18:41	54.5
406	2016/09/23	18:18:42	52.8
407	2016/09/23	18:18:43	52.5
408	2016/09/23	18:18:44	52.5
409	2016/09/23	18:18:45	52.7
410	2016/09/23	18:18:46	58.1
411	2016/09/23	18:18:47	53.0
412	2016/09/23	18:18:48	55.8
413	2016/09/23	18:18:49	57.1
414	2016/09/23	18:18:50	58.8
415	2016/09/23	18:18:51	63.4
416	2016/09/23	18:18:52	66.3
417	2016/09/23	18:18:53	69.8
418	2016/09/23	18:18:54	69.1
419	2016/09/23	18:18:55	64.9
420	2016/09/23	18:18:56	63.3
421	2016/09/23	18:18:57	61.6
422	2016/09/23	18:18:58	60.9
423	2016/09/23	18:18:59	59.3
424	2016/09/23	18:19:00	56.9
425	2016/09/23	18:19:01	54.9
426	2016/09/23	18:19:02	52.7
427	2016/09/23	18:19:03	52.9
428	2016/09/23	18:19:04	51.5
429	2016/09/23	18:19:05	52.4
430	2016/09/23	18:19:06	51.6
431	2016/09/23	18:19:07	51.1
432	2016/09/23	18:19:08	52.7
433	2016/09/23	18:19:09	53.3
434	2016/09/23	18:19:10	55.5
435	2016/09/23	18:19:11	57.1
436	2016/09/23	18:19:12	58.4
437	2016/09/23	18:19:13	62.5
438	2016/09/23	18:19:14	68.5
439	2016/09/23	18:19:15	70.0
440	2016/09/23	18:19:16	62.3
441	2016/09/23	18:19:17	59.0
442	2016/09/23	18:19:18	55.4
443	2016/09/23	18:19:19	54.8
444	2016/09/23	18:19:20	54.1
445	2016/09/23	18:19:21	56.2
446	2016/09/23	18:19:22	57.9
447	2016/09/23	18:19:23	57.6
448	2016/09/23	18:19:24	57.2
449	2016/09/23	18:19:25	57.5
450	2016/09/23	18:19:26	56.5
451	2016/09/23	18:19:27	55.3
452	2016/09/23	18:19:28	54.3
453	2016/09/23	18:19:29	53.7
454	2016/09/23	18:19:30	55.3
455	2016/09/23	18:19:31	57.1
456	2016/09/23	18:19:32	59.9
457	2016/09/23	18:19:33	65.2
458	2016/09/23	18:19:34	66.3
459	2016/09/23	18:19:35	63.5
460	2016/09/23	18:19:36	59.5
461	2016/09/23	18:19:37	58.3
462	2016/09/23	18:19:38	58.4
463	2016/09/23	18:19:39	61.2
464	2016/09/23	18:19:40	63.7
465	2016/09/23	18:19:41	67.4
466	2016/09/23	18:19:42	74.2
467	2016/09/23	18:19:43	72.2
468	2016/09/23	18:19:44	68.0
469	2016/09/23	18:19:45	63.3
470	2016/09/23	18:19:46	64.0
471	2016/09/23	18:19:47	62.2
472	2016/09/23	18:19:48	66.3
473	2016/09/23	18:19:49	71.2
474	2016/09/23	18:19:50	71.5
475	2016/09/23	18:19:51	66.6
476	2016/09/23	18:19:52	62.2
477	2016/09/23	18:19:53	57.7
478	2016/09/23	18:19:54	56.6
479	2016/09/23	18:19:55	56.0
480	2016/09/23	18:19:56	55.8
481	2016/09/23	18:19:57	56.6

482	2016/09/23	18:19:58	56.8
483	2016/09/23	18:19:59	58.7
484	2016/09/23	18:20:00	60.0
485	2016/09/23	18:20:01	57.4
486	2016/09/23	18:20:02	56.4
487	2016/09/23	18:20:03	55.0
488	2016/09/23	18:20:04	55.2
489	2016/09/23	18:20:05	55.6
490	2016/09/23	18:20:06	56.0
491	2016/09/23	18:20:07	56.7
492	2016/09/23	18:20:08	59.3
493	2016/09/23	18:20:09	61.9
494	2016/09/23	18:20:10	68.8
495	2016/09/23	18:20:11	75.3
496	2016/09/23	18:20:12	72.3
497	2016/09/23	18:20:13	69.6
498	2016/09/23	18:20:14	64.6
499	2016/09/23	18:20:15	62.1
500	2016/09/23	18:20:16	58.1
501	2016/09/23	18:20:17	57.5
502	2016/09/23	18:20:18	59.0
503	2016/09/23	18:20:19	57.2
504	2016/09/23	18:20:20	55.8
505	2016/09/23	18:20:21	53.9
506	2016/09/23	18:20:22	53.2
507	2016/09/23	18:20:23	52.5
508	2016/09/23	18:20:24	52.2
509	2016/09/23	18:20:25	52.7
510	2016/09/23	18:20:26	53.8
511	2016/09/23	18:20:27	54.6
512	2016/09/23	18:20:28	54.3
513	2016/09/23	18:20:29	54.1
514	2016/09/23	18:20:30	55.4
515	2016/09/23	18:20:31	56.6
516	2016/09/23	18:20:32	57.2
517	2016/09/23	18:20:33	59.3
518	2016/09/23	18:20:34	61.7
519	2016/09/23	18:20:35	65.9
520	2016/09/23	18:20:36	68.1
521	2016/09/23	18:20:37	67.3
522	2016/09/23	18:20:38	64.5
523	2016/09/23	18:20:39	65.5
524	2016/09/23	18:20:40	64.3
525	2016/09/23	18:20:41	62.3
526	2016/09/23	18:20:42	62.5
527	2016/09/23	18:20:43	63.0
528	2016/09/23	18:20:44	64.8
529	2016/09/23	18:20:45	67.7
530	2016/09/23	18:20:46	70.6
531	2016/09/23	18:20:47	67.8
532	2016/09/23	18:20:48	64.7
533	2016/09/23	18:20:49	62.1
534	2016/09/23	18:20:50	60.7
535	2016/09/23	18:20:51	60.4
536	2016/09/23	18:20:52	57.2
537	2016/09/23	18:20:53	55.7
538	2016/09/23	18:20:54	55.3
539	2016/09/23	18:20:55	54.4
540	2016/09/23	18:20:56	53.9
541	2016/09/23	18:20:57	54.8
542	2016/09/23	18:20:58	54.6
543	2016/09/23	18:20:59	55.1
544	2016/09/23	18:21:00	54.9
545	2016/09/23	18:21:01	56.2
546	2016/09/23	18:21:02	56.6
547	2016/09/23	18:21:03	56.7
548	2016/09/23	18:21:04	56.4
549	2016/09/23	18:21:05	56.6
550	2016/09/23	18:21:06	56.1
551	2016/09/23	18:21:07	56.2
552	2016/09/23	18:21:08	56.1
553	2016/09/23	18:21:09	56.6
554	2016/09/23	18:21:10	57.9
555	2016/09/23	18:21:11	58.8
556	2016/09/23	18:21:12	58.9
557	2016/09/23	18:21:13	58.7
558	2016/09/23	18:21:14	59.4
559	2016/09/23	18:21:15	63.4
560	2016/09/23	18:21:16	66.7
561	2016/09/23	18:21:17	68.5
562	2016/09/23	18:21:18	66.6
563	2016/09/23	18:21:19	64.6
564	2016/09/23	18:21:20	65.6
565	2016/09/23	18:21:21	67.8
566	2016/09/23	18:21:22	66.8
567	2016/09/23	18:21:23	63.1
568	2016/09/23	18:21:24	63.9
569	2016/09/23	18:21:25	69.3
570	2016/09/23	18:21:26	73.6
571	2016/09/23	18:21:27	71.2
572	2016/09/23	18:21:28	66.0
573	2016/09/23	18:21:29	62.0
574	2016/09/23	18:21:30	59.2
575	2016/09/23	18:21:31	57.6
576	2016/09/23	18:21:32	56.5
577	2016/09/23	18:21:33	55.4
578	2016/09/23	18:21:34	54.5
579	2016/09/23	18:21:35	54.5
580	2016/09/23	18:21:36	55.4

581	2016/09/23	18:21:37	57.1
582	2016/09/23	18:21:38	59.6
583	2016/09/23	18:21:39	60.7
584	2016/09/23	18:21:40	66.6
585	2016/09/23	18:21:41	70.5
586	2016/09/23	18:21:42	72.3
587	2016/09/23	18:21:43	66.8
588	2016/09/23	18:21:44	63.5
589	2016/09/23	18:21:45	62.4
590	2016/09/23	18:21:46	62.1
591	2016/09/23	18:21:47	60.1
592	2016/09/23	18:21:48	60.4
593	2016/09/23	18:21:49	65.2
594	2016/09/23	18:21:50	70.3
595	2016/09/23	18:21:51	70.2
596	2016/09/23	18:21:52	65.6
597	2016/09/23	18:21:53	61.2
598	2016/09/23	18:21:54	59.1
599	2016/09/23	18:21:55	58.9
600	2016/09/23	18:21:56	58.1
601	2016/09/23	18:21:57	61.6
602	2016/09/23	18:21:58	66.1
603	2016/09/23	18:21:59	70.7
604	2016/09/23	18:22:00	72.4
605	2016/09/23	18:22:01	67.6
606	2016/09/23	18:22:02	68.7
607	2016/09/23	18:22:03	71.5
608	2016/09/23	18:22:04	69.1
609	2016/09/23	18:22:05	69.6
610	2016/09/23	18:22:06	73.5
611	2016/09/23	18:22:07	70.4
612	2016/09/23	18:22:08	65.2
613	2016/09/23	18:22:09	61.3
614	2016/09/23	18:22:10	60.6
615	2016/09/23	18:22:11	58.7
616	2016/09/23	18:22:12	58.2
617	2016/09/23	18:22:13	56.7
618	2016/09/23	18:22:14	56.8
619	2016/09/23	18:22:15	55.7
620	2016/09/23	18:22:16	55.5
621	2016/09/23	18:22:17	57.1
622	2016/09/23	18:22:18	57.0
623	2016/09/23	18:22:19	55.9
624	2016/09/23	18:22:20	56.3
625	2016/09/23	18:22:21	58.1
626	2016/09/23	18:22:22	59.0
627	2016/09/23	18:22:23	58.3
628	2016/09/23	18:22:24	58.3
629	2016/09/23	18:22:25	57.3
630	2016/09/23	18:22:26	58.3
631	2016/09/23	18:22:27	58.5
632	2016/09/23	18:22:28	62.2
633	2016/09/23	18:22:29	68.3
634	2016/09/23	18:22:30	73.3
635	2016/09/23	18:22:31	69.8
636	2016/09/23	18:22:32	65.1
637	2016/09/23	18:22:33	62.0
638	2016/09/23	18:22:34	58.0
639	2016/09/23	18:22:35	54.9
640	2016/09/23	18:22:36	54.0
641	2016/09/23	18:22:37	53.0
642	2016/09/23	18:22:38	53.9
643	2016/09/23	18:22:39	53.2
644	2016/09/23	18:22:40	53.6
645	2016/09/23	18:22:41	51.5
646	2016/09/23	18:22:42	52.1
647	2016/09/23	18:22:43	52.6
648	2016/09/23	18:22:44	52.2
649	2016/09/23	18:22:45	52.5
650	2016/09/23	18:22:46	52.4
651	2016/09/23	18:22:47	53.6
652	2016/09/23	18:22:48	54.6
653	2016/09/23	18:22:49	56.3
654	2016/09/23	18:22:50	58.1
655	2016/09/23	18:22:51	58.3
656	2016/09/23	18:22:52	58.5
657	2016/09/23	18:22:53	59.6
658	2016/09/23	18:22:54	62.9
659	2016/09/23	18:22:55	67.0
660	2016/09/23	18:22:56	68.9
661	2016/09/23	18:22:57	66.3
662	2016/09/23	18:22:58	62.7
663	2016/09/23	18:22:59	61.9
664	2016/09/23	18:23:00	61.5
665	2016/09/23	18:23:01	60.3
666	2016/09/23	18:23:02	59.7
667	2016/09/23	18:23:03	61.8
668	2016/09/23	18:23:04	65.7
669	2016/09/23	18:23:05	71.6
670	2016/09/23	18:23:06	72.3
671	2016/09/23	18:23:07	67.8
672	2016/09/23	18:23:08	69.8
673	2016/09/23	18:23:09	70.9
674	2016/09/23	18:23:10	69.9
675	2016/09/23	18:23:11	68.3
676	2016/09/23	18:23:12	65.5
677	2016/09/23	18:23:13	63.4
678	2016/09/23	18:23:14	60.0
679	2016/09/23	18:23:15	57.5

680	2016/09/23	18: 23: 16	56. 6
681	2016/09/23	18: 23: 17	55. 6
682	2016/09/23	18: 23: 18	54. 4
683	2016/09/23	18: 23: 19	54. 1
684	2016/09/23	18: 23: 20	52. 6
685	2016/09/23	18: 23: 21	51. 5
686	2016/09/23	18: 23: 22	51. 2
687	2016/09/23	18: 23: 23	52. 0
688	2016/09/23	18: 23: 24	51. 7
689	2016/09/23	18: 23: 25	51. 5
690	2016/09/23	18: 23: 26	51. 4
691	2016/09/23	18: 23: 27	51. 7
692	2016/09/23	18: 23: 28	52. 5
693	2016/09/23	18: 23: 29	53. 6
694	2016/09/23	18: 23: 30	54. 7
695	2016/09/23	18: 23: 31	56. 8
696	2016/09/23	18: 23: 32	60. 0
697	2016/09/23	18: 23: 33	69. 0
698	2016/09/23	18: 23: 34	72. 8
699	2016/09/23	18: 23: 35	70. 4
700	2016/09/23	18: 23: 36	68. 3
701	2016/09/23	18: 23: 37	62. 6
702	2016/09/23	18: 23: 38	58. 8
703	2016/09/23	18: 23: 39	55. 9
704	2016/09/23	18: 23: 40	54. 3
705	2016/09/23	18: 23: 41	53. 2
706	2016/09/23	18: 23: 42	52. 5
707	2016/09/23	18: 23: 43	54. 2
708	2016/09/23	18: 23: 44	52. 1
709	2016/09/23	18: 23: 45	52. 0
710	2016/09/23	18: 23: 46	53. 0
711	2016/09/23	18: 23: 47	53. 2
712	2016/09/23	18: 23: 48	53. 7
713	2016/09/23	18: 23: 49	53. 5
714	2016/09/23	18: 23: 50	53. 9
715	2016/09/23	18: 23: 51	53. 9
716	2016/09/23	18: 23: 52	54. 4
717	2016/09/23	18: 23: 53	53. 6
718	2016/09/23	18: 23: 54	54. 8
719	2016/09/23	18: 23: 55	54. 2
720	2016/09/23	18: 23: 56	54. 0
721	2016/09/23	18: 23: 57	54. 3
722	2016/09/23	18: 23: 58	57. 7
723	2016/09/23	18: 23: 59	61. 1
724	2016/09/23	18: 24: 00	64. 4
725	2016/09/23	18: 24: 01	65. 4
726	2016/09/23	18: 24: 02	65. 2
727	2016/09/23	18: 24: 03	70. 1
728	2016/09/23	18: 24: 04	71. 0
729	2016/09/23	18: 24: 05	69. 1
730	2016/09/23	18: 24: 06	64. 6
731	2016/09/23	18: 24: 07	61. 8
732	2016/09/23	18: 24: 08	60. 4
733	2016/09/23	18: 24: 09	60. 1
734	2016/09/23	18: 24: 10	58. 9
735	2016/09/23	18: 24: 11	58. 1
736	2016/09/23	18: 24: 12	56. 9
737	2016/09/23	18: 24: 13	55. 4
738	2016/09/23	18: 24: 14	55. 3
739	2016/09/23	18: 24: 15	55. 0
740	2016/09/23	18: 24: 16	58. 1
741	2016/09/23	18: 24: 17	58. 1
742	2016/09/23	18: 24: 18	59. 3
743	2016/09/23	18: 24: 19	59. 0
744	2016/09/23	18: 24: 20	62. 7
745	2016/09/23	18: 24: 21	69. 1
746	2016/09/23	18: 24: 22	72. 1
747	2016/09/23	18: 24: 23	70. 5
748	2016/09/23	18: 24: 24	66. 1
749	2016/09/23	18: 24: 25	63. 7
750	2016/09/23	18: 24: 26	66. 9
751	2016/09/23	18: 24: 27	68. 7
752	2016/09/23	18: 24: 28	64. 7
753	2016/09/23	18: 24: 29	60. 7
754	2016/09/23	18: 24: 30	59. 2
755	2016/09/23	18: 24: 31	57. 6
756	2016/09/23	18: 24: 32	55. 5
757	2016/09/23	18: 24: 33	56. 9
758	2016/09/23	18: 24: 34	61. 8
759	2016/09/23	18: 24: 35	66. 5
760	2016/09/23	18: 24: 36	68. 8
761	2016/09/23	18: 24: 37	66. 8
762	2016/09/23	18: 24: 38	62. 1
763	2016/09/23	18: 24: 39	60. 4
764	2016/09/23	18: 24: 40	59. 4
765	2016/09/23	18: 24: 41	57. 1
766	2016/09/23	18: 24: 42	57. 1
767	2016/09/23	18: 24: 43	61. 2
768	2016/09/23	18: 24: 44	66. 8
769	2016/09/23	18: 24: 45	73. 2
770	2016/09/23	18: 24: 46	72. 2
771	2016/09/23	18: 24: 47	66. 2
772	2016/09/23	18: 24: 48	61. 2
773	2016/09/23	18: 24: 49	58. 8
774	2016/09/23	18: 24: 50	59. 1
775	2016/09/23	18: 24: 51	61. 4
776	2016/09/23	18: 24: 52	67. 5
777	2016/09/23	18: 24: 53	75. 3
778	2016/09/23	18: 24: 54	72. 7

779	2016/09/23	18:24:55	65.2
780	2016/09/23	18:24:56	61.0
781	2016/09/23	18:24:57	56.4
782	2016/09/23	18:24:58	52.5
783	2016/09/23	18:24:59	51.9
784	2016/09/23	18:25:00	51.4
785	2016/09/23	18:25:01	52.7
786	2016/09/23	18:25:02	52.1
787	2016/09/23	18:25:03	52.0
788	2016/09/23	18:25:04	52.8
789	2016/09/23	18:25:05	55.0
790	2016/09/23	18:25:06	56.7
791	2016/09/23	18:25:07	58.6
792	2016/09/23	18:25:08	62.5
793	2016/09/23	18:25:09	68.8
794	2016/09/23	18:25:10	70.2
795	2016/09/23	18:25:11	66.6
796	2016/09/23	18:25:12	62.2
797	2016/09/23	18:25:13	59.9
798	2016/09/23	18:25:14	57.1
799	2016/09/23	18:25:15	56.6
800	2016/09/23	18:25:16	56.9
801	2016/09/23	18:25:17	56.8
802	2016/09/23	18:25:18	57.0
803	2016/09/23	18:25:19	57.5
804	2016/09/23	18:25:20	56.9
805	2016/09/23	18:25:21	54.9
806	2016/09/23	18:25:22	53.1
807	2016/09/23	18:25:23	53.9
808	2016/09/23	18:25:24	54.3
809	2016/09/23	18:25:25	55.2
810	2016/09/23	18:25:26	55.2
811	2016/09/23	18:25:27	55.8
812	2016/09/23	18:25:28	56.4
813	2016/09/23	18:25:29	57.5
814	2016/09/23	18:25:30	58.9
815	2016/09/23	18:25:31	59.5
816	2016/09/23	18:25:32	60.2
817	2016/09/23	18:25:33	59.6
818	2016/09/23	18:25:34	57.0
819	2016/09/23	18:25:35	55.7
820	2016/09/23	18:25:36	55.7
821	2016/09/23	18:25:37	55.4
822	2016/09/23	18:25:38	56.8
823	2016/09/23	18:25:39	56.2
824	2016/09/23	18:25:40	56.4
825	2016/09/23	18:25:41	56.5
826	2016/09/23	18:25:42	56.1
827	2016/09/23	18:25:43	56.4
828	2016/09/23	18:25:44	57.2
829	2016/09/23	18:25:45	57.9
830	2016/09/23	18:25:46	56.9
831	2016/09/23	18:25:47	58.1
832	2016/09/23	18:25:48	57.3
833	2016/09/23	18:25:49	57.6
834	2016/09/23	18:25:50	55.2
835	2016/09/23	18:25:51	53.3
836	2016/09/23	18:25:52	54.4
837	2016/09/23	18:25:53	54.0
838	2016/09/23	18:25:54	53.2
839	2016/09/23	18:25:55	55.3
840	2016/09/23	18:25:56	55.9
841	2016/09/23	18:25:57	56.3
842	2016/09/23	18:25:58	57.4
843	2016/09/23	18:25:59	56.3
844	2016/09/23	18:26:00	56.0
845	2016/09/23	18:26:01	56.2
846	2016/09/23	18:26:02	56.6
847	2016/09/23	18:26:03	58.1
848	2016/09/23	18:26:04	59.0
849	2016/09/23	18:26:05	58.2
850	2016/09/23	18:26:06	58.4
851	2016/09/23	18:26:07	58.7
852	2016/09/23	18:26:08	59.7
853	2016/09/23	18:26:09	59.2
854	2016/09/23	18:26:10	58.3
855	2016/09/23	18:26:11	59.5
856	2016/09/23	18:26:12	58.5
857	2016/09/23	18:26:13	59.4
858	2016/09/23	18:26:14	58.9
859	2016/09/23	18:26:15	58.9
860	2016/09/23	18:26:16	58.1
861	2016/09/23	18:26:17	57.2
862	2016/09/23	18:26:18	55.5
863	2016/09/23	18:26:19	55.5
864	2016/09/23	18:26:20	55.5
865	2016/09/23	18:26:21	56.1
866	2016/09/23	18:26:22	56.7
867	2016/09/23	18:26:23	56.3
868	2016/09/23	18:26:24	57.0
869	2016/09/23	18:26:25	60.0
870	2016/09/23	18:26:26	62.7
871	2016/09/23	18:26:27	66.1
872	2016/09/23	18:26:28	62.2
873	2016/09/23	18:26:29	59.6
874	2016/09/23	18:26:30	58.4
875	2016/09/23	18:26:31	56.0
876	2016/09/23	18:26:32	54.3
877	2016/09/23	18:26:33	54.1

878	2016/09/23	18: 26: 34	53. 6
879	2016/09/23	18: 26: 35	53. 4
880	2016/09/23	18: 26: 36	56. 6
881	2016/09/23	18: 26: 37	58. 0
882	2016/09/23	18: 26: 38	59. 8
883	2016/09/23	18: 26: 39	61. 5
884	2016/09/23	18: 26: 40	60. 8
885	2016/09/23	18: 26: 41	60. 3
886	2016/09/23	18: 26: 42	59. 0
887	2016/09/23	18: 26: 43	56. 6
888	2016/09/23	18: 26: 44	55. 0
889	2016/09/23	18: 26: 45	53. 9
890	2016/09/23	18: 26: 46	54. 3
891	2016/09/23	18: 26: 47	54. 2
892	2016/09/23	18: 26: 48	55. 5
893	2016/09/23	18: 26: 49	56. 5
894	2016/09/23	18: 26: 50	57. 1
895	2016/09/23	18: 26: 51	56. 9
896	2016/09/23	18: 26: 52	58. 4
897	2016/09/23	18: 26: 53	57. 1
898	2016/09/23	18: 26: 54	56. 7
899	2016/09/23	18: 26: 55	56. 7
900	2016/09/23	18: 26: 56	56. 1

Freq Weight : A
Time Weight : FAST
Level Range : 40-100
Max dB : 86.2 - 2016/09/23 18:41:11
Level Range : 40-100
SEL : 96.5
Leq : 67.0

No. s	Date Time	(dB)
1	2016/09/23 18:28:03	59.8
2	2016/09/23 18:28:04	58.5
3	2016/09/23 18:28:05	59.2
4	2016/09/23 18:28:06	59.2
5	2016/09/23 18:28:07	61.4
6	2016/09/23 18:28:08	66.0
7	2016/09/23 18:28:09	72.3
8	2016/09/23 18:28:10	67.3
9	2016/09/23 18:28:11	62.7
10	2016/09/23 18:28:12	61.1
11	2016/09/23 18:28:13	58.6
12	2016/09/23 18:28:14	57.8
13	2016/09/23 18:28:15	57.8
14	2016/09/23 18:28:16	56.8
15	2016/09/23 18:28:17	55.6
16	2016/09/23 18:28:18	54.2
17	2016/09/23 18:28:19	54.1
18	2016/09/23 18:28:20	54.1
19	2016/09/23 18:28:21	53.1
20	2016/09/23 18:28:22	52.5
21	2016/09/23 18:28:23	54.1
22	2016/09/23 18:28:24	53.7
23	2016/09/23 18:28:25	55.3
24	2016/09/23 18:28:26	55.8
25	2016/09/23 18:28:27	58.1
26	2016/09/23 18:28:28	59.5
27	2016/09/23 18:28:29	58.3
28	2016/09/23 18:28:30	59.8
29	2016/09/23 18:28:31	61.0
30	2016/09/23 18:28:32	64.1
31	2016/09/23 18:28:33	69.7
32	2016/09/23 18:28:34	75.3
33	2016/09/23 18:28:35	79.8
34	2016/09/23 18:28:36	72.7
35	2016/09/23 18:28:37	69.2
36	2016/09/23 18:28:38	66.5
37	2016/09/23 18:28:39	67.1
38	2016/09/23 18:28:40	71.8
39	2016/09/23 18:28:41	73.9
40	2016/09/23 18:28:42	70.6
41	2016/09/23 18:28:43	66.5
42	2016/09/23 18:28:44	64.1
43	2016/09/23 18:28:45	63.9
44	2016/09/23 18:28:46	63.0
45	2016/09/23 18:28:47	64.9
46	2016/09/23 18:28:48	65.4
47	2016/09/23 18:28:49	65.7
48	2016/09/23 18:28:50	68.3
49	2016/09/23 18:28:51	70.5
50	2016/09/23 18:28:52	75.8
51	2016/09/23 18:28:53	84.0
52	2016/09/23 18:28:54	80.6
53	2016/09/23 18:28:55	70.7
54	2016/09/23 18:28:56	64.7
55	2016/09/23 18:28:57	63.3
56	2016/09/23 18:28:58	66.0
57	2016/09/23 18:28:59	71.1
58	2016/09/23 18:29:00	70.1
59	2016/09/23 18:29:01	63.4
60	2016/09/23 18:29:02	59.1
61	2016/09/23 18:29:03	56.7
62	2016/09/23 18:29:04	56.3
63	2016/09/23 18:29:05	54.8
64	2016/09/23 18:29:06	54.3
65	2016/09/23 18:29:07	52.4
66	2016/09/23 18:29:08	51.2
67	2016/09/23 18:29:09	52.4
68	2016/09/23 18:29:10	51.6
69	2016/09/23 18:29:11	53.9
70	2016/09/23 18:29:12	52.5
71	2016/09/23 18:29:13	51.8
72	2016/09/23 18:29:14	53.8
73	2016/09/23 18:29:15	56.6
74	2016/09/23 18:29:16	56.7
75	2016/09/23 18:29:17	58.1
76	2016/09/23 18:29:18	58.6
77	2016/09/23 18:29:19	58.5
78	2016/09/23 18:29:20	58.1
79	2016/09/23 18:29:21	56.1
80	2016/09/23 18:29:22	58.5
81	2016/09/23 18:29:23	54.4
82	2016/09/23 18:29:24	55.5
83	2016/09/23 18:29:25	57.6
84	2016/09/23 18:29:26	58.3
85	2016/09/23 18:29:27	59.4

86	2016/09/23	18:29:28	60.0
87	2016/09/23	18:29:29	57.1
88	2016/09/23	18:29:30	57.4
89	2016/09/23	18:29:31	58.6
90	2016/09/23	18:29:32	59.5
91	2016/09/23	18:29:33	61.2
92	2016/09/23	18:29:34	63.4
93	2016/09/23	18:29:35	68.4
94	2016/09/23	18:29:36	71.9
95	2016/09/23	18:29:37	69.2
96	2016/09/23	18:29:38	64.1
97	2016/09/23	18:29:39	61.7
98	2016/09/23	18:29:40	61.6
99	2016/09/23	18:29:41	61.0
100	2016/09/23	18:29:42	63.9
101	2016/09/23	18:29:43	67.5
102	2016/09/23	18:29:44	67.2
103	2016/09/23	18:29:45	64.1
104	2016/09/23	18:29:46	62.1
105	2016/09/23	18:29:47	61.5
106	2016/09/23	18:29:48	61.8
107	2016/09/23	18:29:49	64.8
108	2016/09/23	18:29:50	69.0
109	2016/09/23	18:29:51	69.6
110	2016/09/23	18:29:52	64.0
111	2016/09/23	18:29:53	60.4
112	2016/09/23	18:29:54	57.8
113	2016/09/23	18:29:55	58.8
114	2016/09/23	18:29:56	59.7
115	2016/09/23	18:29:57	60.8
116	2016/09/23	18:29:58	63.2
117	2016/09/23	18:29:59	66.6
118	2016/09/23	18:30:00	66.8
119	2016/09/23	18:30:01	63.0
120	2016/09/23	18:30:02	60.3
121	2016/09/23	18:30:03	57.9
122	2016/09/23	18:30:04	55.8
123	2016/09/23	18:30:05	53.9
124	2016/09/23	18:30:06	55.1
125	2016/09/23	18:30:07	53.9
126	2016/09/23	18:30:08	56.8
127	2016/09/23	18:30:09	58.0
128	2016/09/23	18:30:10	61.6
129	2016/09/23	18:30:11	68.8
130	2016/09/23	18:30:12	65.6
131	2016/09/23	18:30:13	62.9
132	2016/09/23	18:30:14	59.5
133	2016/09/23	18:30:15	57.4
134	2016/09/23	18:30:16	57.0
135	2016/09/23	18:30:17	59.2
136	2016/09/23	18:30:18	63.2
137	2016/09/23	18:30:19	67.7
138	2016/09/23	18:30:20	72.7
139	2016/09/23	18:30:21	71.3
140	2016/09/23	18:30:22	63.7
141	2016/09/23	18:30:23	57.7
142	2016/09/23	18:30:24	54.9
143	2016/09/23	18:30:25	56.4
144	2016/09/23	18:30:26	56.6
145	2016/09/23	18:30:27	56.3
146	2016/09/23	18:30:28	55.7
147	2016/09/23	18:30:29	55.5
148	2016/09/23	18:30:30	55.1
149	2016/09/23	18:30:31	56.5
150	2016/09/23	18:30:32	58.7
151	2016/09/23	18:30:33	62.8
152	2016/09/23	18:30:34	68.2
153	2016/09/23	18:30:35	75.2
154	2016/09/23	18:30:36	72.0
155	2016/09/23	18:30:37	64.3
156	2016/09/23	18:30:38	60.0
157	2016/09/23	18:30:39	60.9
158	2016/09/23	18:30:40	59.9
159	2016/09/23	18:30:41	57.7
160	2016/09/23	18:30:42	56.6
161	2016/09/23	18:30:43	56.3
162	2016/09/23	18:30:44	56.7
163	2016/09/23	18:30:45	57.1
164	2016/09/23	18:30:46	57.5
165	2016/09/23	18:30:47	57.4
166	2016/09/23	18:30:48	57.6
167	2016/09/23	18:30:49	59.8
168	2016/09/23	18:30:50	62.0
169	2016/09/23	18:30:51	68.3
170	2016/09/23	18:30:52	68.9
171	2016/09/23	18:30:53	66.8
172	2016/09/23	18:30:54	63.5
173	2016/09/23	18:30:55	60.6
174	2016/09/23	18:30:56	59.6
175	2016/09/23	18:30:57	57.6
176	2016/09/23	18:30:58	58.5
177	2016/09/23	18:30:59	56.2
178	2016/09/23	18:31:00	55.8
179	2016/09/23	18:31:01	56.8
180	2016/09/23	18:31:02	58.5
181	2016/09/23	18:31:03	60.1
182	2016/09/23	18:31:04	62.5
183	2016/09/23	18:31:05	66.0
184	2016/09/23	18:31:06	71.4

185	2016/09/23	18:31:07	72.0
186	2016/09/23	18:31:08	66.9
187	2016/09/23	18:31:09	63.8
188	2016/09/23	18:31:10	62.2
189	2016/09/23	18:31:11	59.7
190	2016/09/23	18:31:12	57.8
191	2016/09/23	18:31:13	57.1
192	2016/09/23	18:31:14	57.5
193	2016/09/23	18:31:15	57.3
194	2016/09/23	18:31:16	57.5
195	2016/09/23	18:31:17	56.3
196	2016/09/23	18:31:18	56.9
197	2016/09/23	18:31:19	57.6
198	2016/09/23	18:31:20	57.1
199	2016/09/23	18:31:21	56.2
200	2016/09/23	18:31:22	56.4
201	2016/09/23	18:31:23	56.6
202	2016/09/23	18:31:24	59.3
203	2016/09/23	18:31:25	61.3
204	2016/09/23	18:31:26	65.5
205	2016/09/23	18:31:27	70.0
206	2016/09/23	18:31:28	76.3
207	2016/09/23	18:31:29	79.2
208	2016/09/23	18:31:30	73.1
209	2016/09/23	18:31:31	69.6
210	2016/09/23	18:31:32	71.5
211	2016/09/23	18:31:33	72.9
212	2016/09/23	18:31:34	68.4
213	2016/09/23	18:31:35	65.6
214	2016/09/23	18:31:36	65.6
215	2016/09/23	18:31:37	68.2
216	2016/09/23	18:31:38	67.8
217	2016/09/23	18:31:39	64.6
218	2016/09/23	18:31:40	62.5
219	2016/09/23	18:31:41	61.1
220	2016/09/23	18:31:42	58.9
221	2016/09/23	18:31:43	59.0
222	2016/09/23	18:31:44	61.7
223	2016/09/23	18:31:45	58.2
224	2016/09/23	18:31:46	59.5
225	2016/09/23	18:31:47	59.1
226	2016/09/23	18:31:48	57.2
227	2016/09/23	18:31:49	58.0
228	2016/09/23	18:31:50	58.8
229	2016/09/23	18:31:51	55.1
230	2016/09/23	18:31:52	55.0
231	2016/09/23	18:31:53	53.5
232	2016/09/23	18:31:54	52.6
233	2016/09/23	18:31:55	52.9
234	2016/09/23	18:31:56	54.3
235	2016/09/23	18:31:57	56.3
236	2016/09/23	18:31:58	55.5
237	2016/09/23	18:31:59	56.7
238	2016/09/23	18:32:00	56.2
239	2016/09/23	18:32:01	57.1
240	2016/09/23	18:32:02	59.9
241	2016/09/23	18:32:03	59.7
242	2016/09/23	18:32:04	60.1
243	2016/09/23	18:32:05	60.6
244	2016/09/23	18:32:06	62.4
245	2016/09/23	18:32:07	65.2
246	2016/09/23	18:32:08	70.1
247	2016/09/23	18:32:09	68.6
248	2016/09/23	18:32:10	66.6
249	2016/09/23	18:32:11	65.0
250	2016/09/23	18:32:12	63.8
251	2016/09/23	18:32:13	67.6
252	2016/09/23	18:32:14	69.0
253	2016/09/23	18:32:15	74.0
254	2016/09/23	18:32:16	79.0
255	2016/09/23	18:32:17	78.2
256	2016/09/23	18:32:18	71.2
257	2016/09/23	18:32:19	66.8
258	2016/09/23	18:32:20	65.1
259	2016/09/23	18:32:21	65.6
260	2016/09/23	18:32:22	63.7
261	2016/09/23	18:32:23	61.8
262	2016/09/23	18:32:24	63.3
263	2016/09/23	18:32:25	66.1
264	2016/09/23	18:32:26	73.9
265	2016/09/23	18:32:27	75.8
266	2016/09/23	18:32:28	70.8
267	2016/09/23	18:32:29	66.8
268	2016/09/23	18:32:30	64.3
269	2016/09/23	18:32:31	62.4
270	2016/09/23	18:32:32	58.1
271	2016/09/23	18:32:33	54.9
272	2016/09/23	18:32:34	55.5
273	2016/09/23	18:32:35	56.1
274	2016/09/23	18:32:36	54.2
275	2016/09/23	18:32:37	55.3
276	2016/09/23	18:32:38	56.3
277	2016/09/23	18:32:39	57.5
278	2016/09/23	18:32:40	58.4
279	2016/09/23	18:32:41	59.0
280	2016/09/23	18:32:42	58.5
281	2016/09/23	18:32:43	58.2
282	2016/09/23	18:32:44	57.9
283	2016/09/23	18:32:45	58.8

284	2016/09/23	18:32:46	56.7
285	2016/09/23	18:32:47	56.4
286	2016/09/23	18:32:48	66.3
287	2016/09/23	18:32:49	54.6
288	2016/09/23	18:32:50	54.0
289	2016/09/23	18:32:51	54.6
290	2016/09/23	18:32:52	54.7
291	2016/09/23	18:32:53	54.8
292	2016/09/23	18:32:54	54.9
293	2016/09/23	18:32:55	56.6
294	2016/09/23	18:32:56	57.2
295	2016/09/23	18:32:57	58.7
296	2016/09/23	18:32:58	59.0
297	2016/09/23	18:32:59	58.3
298	2016/09/23	18:33:00	58.0
299	2016/09/23	18:33:01	57.5
300	2016/09/23	18:33:02	55.8
301	2016/09/23	18:33:03	62.8
302	2016/09/23	18:33:04	52.9
303	2016/09/23	18:33:05	53.2
304	2016/09/23	18:33:06	53.6
305	2016/09/23	18:33:07	53.9
306	2016/09/23	18:33:08	54.8
307	2016/09/23	18:33:09	56.4
308	2016/09/23	18:33:10	57.5
309	2016/09/23	18:33:11	59.0
310	2016/09/23	18:33:12	58.1
311	2016/09/23	18:33:13	57.0
312	2016/09/23	18:33:14	57.4
313	2016/09/23	18:33:15	55.8
314	2016/09/23	18:33:16	55.5
315	2016/09/23	18:33:17	56.7
316	2016/09/23	18:33:18	58.2
317	2016/09/23	18:33:19	58.4
318	2016/09/23	18:33:20	57.7
319	2016/09/23	18:33:21	58.1
320	2016/09/23	18:33:22	57.8
321	2016/09/23	18:33:23	58.7
322	2016/09/23	18:33:24	62.5
323	2016/09/23	18:33:25	65.3
324	2016/09/23	18:33:26	72.1
325	2016/09/23	18:33:27	72.1
326	2016/09/23	18:33:28	65.5
327	2016/09/23	18:33:29	62.7
328	2016/09/23	18:33:30	61.1
329	2016/09/23	18:33:31	59.7
330	2016/09/23	18:33:32	59.1
331	2016/09/23	18:33:33	59.9
332	2016/09/23	18:33:34	59.0
333	2016/09/23	18:33:35	61.2
334	2016/09/23	18:33:36	63.7
335	2016/09/23	18:33:37	69.0
336	2016/09/23	18:33:38	71.5
337	2016/09/23	18:33:39	69.6
338	2016/09/23	18:33:40	65.7
339	2016/09/23	18:33:41	64.5
340	2016/09/23	18:33:42	66.7
341	2016/09/23	18:33:43	70.9
342	2016/09/23	18:33:44	70.3
343	2016/09/23	18:33:45	65.5
344	2016/09/23	18:33:46	63.2
345	2016/09/23	18:33:47	62.6
346	2016/09/23	18:33:48	64.6
347	2016/09/23	18:33:49	68.2
348	2016/09/23	18:33:50	68.6
349	2016/09/23	18:33:51	66.4
350	2016/09/23	18:33:52	63.2
351	2016/09/23	18:33:53	63.1
352	2016/09/23	18:33:54	64.7
353	2016/09/23	18:33:55	70.2
354	2016/09/23	18:33:56	73.9
355	2016/09/23	18:33:57	76.0
356	2016/09/23	18:33:58	71.2
357	2016/09/23	18:33:59	73.5
358	2016/09/23	18:34:00	75.6
359	2016/09/23	18:34:01	70.2
360	2016/09/23	18:34:02	68.5
361	2016/09/23	18:34:03	63.9
362	2016/09/23	18:34:04	59.2
363	2016/09/23	18:34:05	55.5
364	2016/09/23	18:34:06	53.2
365	2016/09/23	18:34:07	51.3
366	2016/09/23	18:34:08	50.0
367	2016/09/23	18:34:09	50.4
368	2016/09/23	18:34:10	49.9
369	2016/09/23	18:34:11	49.9
370	2016/09/23	18:34:12	51.5
371	2016/09/23	18:34:13	49.4
372	2016/09/23	18:34:14	49.0
373	2016/09/23	18:34:15	49.7
374	2016/09/23	18:34:16	50.5
375	2016/09/23	18:34:17	50.5
376	2016/09/23	18:34:18	51.7
377	2016/09/23	18:34:19	49.7
378	2016/09/23	18:34:20	49.7
379	2016/09/23	18:34:21	50.9
380	2016/09/23	18:34:22	52.0
381	2016/09/23	18:34:23	51.7
382	2016/09/23	18:34:24	51.8

383	2016/09/23	18:34:25	52.7
384	2016/09/23	18:34:26	53.6
385	2016/09/23	18:34:27	55.5
386	2016/09/23	18:34:28	56.1
387	2016/09/23	18:34:29	55.6
388	2016/09/23	18:34:30	54.7
389	2016/09/23	18:34:31	54.2
390	2016/09/23	18:34:32	52.9
391	2016/09/23	18:34:33	52.6
392	2016/09/23	18:34:34	53.1
393	2016/09/23	18:34:35	53.2
394	2016/09/23	18:34:36	52.4
395	2016/09/23	18:34:37	52.2
396	2016/09/23	18:34:38	52.4
397	2016/09/23	18:34:39	52.4
398	2016/09/23	18:34:40	52.7
399	2016/09/23	18:34:41	54.2
400	2016/09/23	18:34:42	53.1
401	2016/09/23	18:34:43	52.8
402	2016/09/23	18:34:44	53.8
403	2016/09/23	18:34:45	53.5
404	2016/09/23	18:34:46	52.9
405	2016/09/23	18:34:47	53.4
406	2016/09/23	18:34:48	53.0
407	2016/09/23	18:34:49	52.5
408	2016/09/23	18:34:50	54.3
409	2016/09/23	18:34:51	51.8
410	2016/09/23	18:34:52	50.1
411	2016/09/23	18:34:53	50.4
412	2016/09/23	18:34:54	51.3
413	2016/09/23	18:34:55	52.9
414	2016/09/23	18:34:56	54.0
415	2016/09/23	18:34:57	54.2
416	2016/09/23	18:34:58	54.9
417	2016/09/23	18:34:59	56.1
418	2016/09/23	18:35:00	57.7
419	2016/09/23	18:35:01	58.9
420	2016/09/23	18:35:02	60.3
421	2016/09/23	18:35:03	58.9
422	2016/09/23	18:35:04	58.0
423	2016/09/23	18:35:05	57.3
424	2016/09/23	18:35:06	57.4
425	2016/09/23	18:35:07	57.9
426	2016/09/23	18:35:08	56.6
427	2016/09/23	18:35:09	55.3
428	2016/09/23	18:35:10	55.1
429	2016/09/23	18:35:11	55.5
430	2016/09/23	18:35:12	56.8
431	2016/09/23	18:35:13	58.3
432	2016/09/23	18:35:14	60.4
433	2016/09/23	18:35:15	61.5
434	2016/09/23	18:35:16	66.1
435	2016/09/23	18:35:17	71.5
436	2016/09/23	18:35:18	68.9
437	2016/09/23	18:35:19	64.3
438	2016/09/23	18:35:20	59.4
439	2016/09/23	18:35:21	56.4
440	2016/09/23	18:35:22	53.0
441	2016/09/23	18:35:23	51.1
442	2016/09/23	18:35:24	50.8
443	2016/09/23	18:35:25	50.9
444	2016/09/23	18:35:26	51.8
445	2016/09/23	18:35:27	54.7
446	2016/09/23	18:35:28	57.5
447	2016/09/23	18:35:29	59.0
448	2016/09/23	18:35:30	64.8
449	2016/09/23	18:35:31	70.2
450	2016/09/23	18:35:32	74.7
451	2016/09/23	18:35:33	69.3
452	2016/09/23	18:35:34	65.5
453	2016/09/23	18:35:35	61.7
454	2016/09/23	18:35:36	61.2
455	2016/09/23	18:35:37	57.7
456	2016/09/23	18:35:38	58.3
457	2016/09/23	18:35:39	59.4
458	2016/09/23	18:35:40	57.2
459	2016/09/23	18:35:41	55.3
460	2016/09/23	18:35:42	52.2
461	2016/09/23	18:35:43	51.2
462	2016/09/23	18:35:44	50.1
463	2016/09/23	18:35:45	49.8
464	2016/09/23	18:35:46	50.3
465	2016/09/23	18:35:47	49.9
466	2016/09/23	18:35:48	51.4
467	2016/09/23	18:35:49	58.1
468	2016/09/23	18:35:50	57.9
469	2016/09/23	18:35:51	56.2
470	2016/09/23	18:35:52	59.0
471	2016/09/23	18:35:53	58.7
472	2016/09/23	18:35:54	59.4
473	2016/09/23	18:35:55	58.5
474	2016/09/23	18:35:56	63.7
475	2016/09/23	18:35:57	67.2
476	2016/09/23	18:35:58	71.6
477	2016/09/23	18:35:59	73.2
478	2016/09/23	18:36:00	68.8
479	2016/09/23	18:36:01	65.0
480	2016/09/23	18:36:02	61.9
481	2016/09/23	18:36:03	58.8

482	2016/09/23	18:36:04	57.5
483	2016/09/23	18:36:05	57.5
484	2016/09/23	18:36:06	55.2
485	2016/09/23	18:36:07	53.6
486	2016/09/23	18:36:08	52.1
487	2016/09/23	18:36:09	51.0
488	2016/09/23	18:36:10	51.4
489	2016/09/23	18:36:11	53.4
490	2016/09/23	18:36:12	59.1
491	2016/09/23	18:36:13	61.5
492	2016/09/23	18:36:14	60.7
493	2016/09/23	18:36:15	62.9
494	2016/09/23	18:36:16	63.0
495	2016/09/23	18:36:17	63.5
496	2016/09/23	18:36:18	57.2
497	2016/09/23	18:36:19	56.7
498	2016/09/23	18:36:20	56.5
499	2016/09/23	18:36:21	58.3
500	2016/09/23	18:36:22	59.2
501	2016/09/23	18:36:23	60.8
502	2016/09/23	18:36:24	58.0
503	2016/09/23	18:36:25	55.6
504	2016/09/23	18:36:26	54.0
505	2016/09/23	18:36:27	54.6
506	2016/09/23	18:36:28	56.1
507	2016/09/23	18:36:29	59.3
508	2016/09/23	18:36:30	59.3
509	2016/09/23	18:36:31	55.7
510	2016/09/23	18:36:32	53.7
511	2016/09/23	18:36:33	52.7
512	2016/09/23	18:36:34	54.0
513	2016/09/23	18:36:35	53.5
514	2016/09/23	18:36:36	55.0
515	2016/09/23	18:36:37	55.8
516	2016/09/23	18:36:38	56.6
517	2016/09/23	18:36:39	55.8
518	2016/09/23	18:36:40	56.7
519	2016/09/23	18:36:41	57.9
520	2016/09/23	18:36:42	58.3
521	2016/09/23	18:36:43	61.0
522	2016/09/23	18:36:44	65.4
523	2016/09/23	18:36:45	70.1
524	2016/09/23	18:36:46	73.1
525	2016/09/23	18:36:47	67.3
526	2016/09/23	18:36:48	64.1
527	2016/09/23	18:36:49	59.8
528	2016/09/23	18:36:50	60.0
529	2016/09/23	18:36:51	56.9
530	2016/09/23	18:36:52	53.4
531	2016/09/23	18:36:53	53.5
532	2016/09/23	18:36:54	56.1
533	2016/09/23	18:36:55	58.0
534	2016/09/23	18:36:56	61.3
535	2016/09/23	18:36:57	64.4
536	2016/09/23	18:36:58	68.4
537	2016/09/23	18:36:59	77.2
538	2016/09/23	18:37:00	76.4
539	2016/09/23	18:37:01	68.4
540	2016/09/23	18:37:02	63.4
541	2016/09/23	18:37:03	62.5
542	2016/09/23	18:37:04	60.9
543	2016/09/23	18:37:05	58.9
544	2016/09/23	18:37:06	59.9
545	2016/09/23	18:37:07	59.8
546	2016/09/23	18:37:08	60.3
547	2016/09/23	18:37:09	61.8
548	2016/09/23	18:37:10	66.4
549	2016/09/23	18:37:11	74.2
550	2016/09/23	18:37:12	70.9
551	2016/09/23	18:37:13	65.5
552	2016/09/23	18:37:14	62.8
553	2016/09/23	18:37:15	59.8
554	2016/09/23	18:37:16	59.0
555	2016/09/23	18:37:17	62.0
556	2016/09/23	18:37:18	64.3
557	2016/09/23	18:37:19	69.2
558	2016/09/23	18:37:20	73.2
559	2016/09/23	18:37:21	70.2
560	2016/09/23	18:37:22	65.0
561	2016/09/23	18:37:23	60.8
562	2016/09/23	18:37:24	58.8
563	2016/09/23	18:37:25	57.5
564	2016/09/23	18:37:26	56.5
565	2016/09/23	18:37:27	55.2
566	2016/09/23	18:37:28	54.5
567	2016/09/23	18:37:29	55.0
568	2016/09/23	18:37:30	54.4
569	2016/09/23	18:37:31	55.0
570	2016/09/23	18:37:32	55.8
571	2016/09/23	18:37:33	56.5
572	2016/09/23	18:37:34	58.3
573	2016/09/23	18:37:35	59.5
574	2016/09/23	18:37:36	57.8
575	2016/09/23	18:37:37	56.5
576	2016/09/23	18:37:38	54.9
577	2016/09/23	18:37:39	54.0
578	2016/09/23	18:37:40	53.3
579	2016/09/23	18:37:41	53.4
580	2016/09/23	18:37:42	53.1

581	2016/09/23	18:37:43	54.4
582	2016/09/23	18:37:44	54.9
583	2016/09/23	18:37:45	56.2
584	2016/09/23	18:37:46	56.4
585	2016/09/23	18:37:47	58.8
586	2016/09/23	18:37:48	58.4
587	2016/09/23	18:37:49	57.1
588	2016/09/23	18:37:50	56.2
589	2016/09/23	18:37:51	56.0
590	2016/09/23	18:37:52	55.7
591	2016/09/23	18:37:53	55.3
592	2016/09/23	18:37:54	55.6
593	2016/09/23	18:37:55	56.9
594	2016/09/23	18:37:56	58.2
595	2016/09/23	18:37:57	58.4
596	2016/09/23	18:37:58	58.4
597	2016/09/23	18:37:59	56.7
598	2016/09/23	18:38:00	57.4
599	2016/09/23	18:38:01	59.7
600	2016/09/23	18:38:02	61.7
601	2016/09/23	18:38:03	65.3
602	2016/09/23	18:38:04	69.5
603	2016/09/23	18:38:05	71.4
604	2016/09/23	18:38:06	67.4
605	2016/09/23	18:38:07	64.8
606	2016/09/23	18:38:08	62.3
607	2016/09/23	18:38:09	63.2
608	2016/09/23	18:38:10	66.1
609	2016/09/23	18:38:11	69.2
610	2016/09/23	18:38:12	71.0
611	2016/09/23	18:38:13	67.8
612	2016/09/23	18:38:14	64.8
613	2016/09/23	18:38:15	62.3
614	2016/09/23	18:38:16	59.9
615	2016/09/23	18:38:17	58.8
616	2016/09/23	18:38:18	59.5
617	2016/09/23	18:38:19	62.5
618	2016/09/23	18:38:20	67.9
619	2016/09/23	18:38:21	74.7
620	2016/09/23	18:38:22	73.0
621	2016/09/23	18:38:23	73.3
622	2016/09/23	18:38:24	71.0
623	2016/09/23	18:38:25	66.5
624	2016/09/23	18:38:26	62.4
625	2016/09/23	18:38:27	60.0
626	2016/09/23	18:38:28	58.1
627	2016/09/23	18:38:29	56.5
628	2016/09/23	18:38:30	56.4
629	2016/09/23	18:38:31	55.8
630	2016/09/23	18:38:32	56.7
631	2016/09/23	18:38:33	58.2
632	2016/09/23	18:38:34	59.9
633	2016/09/23	18:38:35	60.0
634	2016/09/23	18:38:36	59.2
635	2016/09/23	18:38:37	58.5
636	2016/09/23	18:38:38	56.9
637	2016/09/23	18:38:39	56.8
638	2016/09/23	18:38:40	57.5
639	2016/09/23	18:38:41	56.4
640	2016/09/23	18:38:42	57.0
641	2016/09/23	18:38:43	59.8
642	2016/09/23	18:38:44	64.9
643	2016/09/23	18:38:45	70.1
644	2016/09/23	18:38:46	70.8
645	2016/09/23	18:38:47	65.3
646	2016/09/23	18:38:48	62.4
647	2016/09/23	18:38:49	60.0
648	2016/09/23	18:38:50	59.9
649	2016/09/23	18:38:51	58.0
650	2016/09/23	18:38:52	57.3
651	2016/09/23	18:38:53	57.6
652	2016/09/23	18:38:54	58.1
653	2016/09/23	18:38:55	59.7
654	2016/09/23	18:38:56	63.2
655	2016/09/23	18:38:57	67.0
656	2016/09/23	18:38:58	70.4
657	2016/09/23	18:38:59	70.6
658	2016/09/23	18:39:00	67.7
659	2016/09/23	18:39:01	62.9
660	2016/09/23	18:39:02	58.2
661	2016/09/23	18:39:03	55.0
662	2016/09/23	18:39:04	54.6
663	2016/09/23	18:39:05	53.6
664	2016/09/23	18:39:06	54.3
665	2016/09/23	18:39:07	54.9
666	2016/09/23	18:39:08	54.2
667	2016/09/23	18:39:09	53.9
668	2016/09/23	18:39:10	54.2
669	2016/09/23	18:39:11	54.0
670	2016/09/23	18:39:12	53.6
671	2016/09/23	18:39:13	53.1
672	2016/09/23	18:39:14	53.2
673	2016/09/23	18:39:15	53.3
674	2016/09/23	18:39:16	52.4
675	2016/09/23	18:39:17	52.2
676	2016/09/23	18:39:18	51.4
677	2016/09/23	18:39:19	52.1
678	2016/09/23	18:39:20	50.7
679	2016/09/23	18:39:21	50.7

680	2016/09/23	18:39:22	51.3
681	2016/09/23	18:39:23	51.9
682	2016/09/23	18:39:24	54.1
683	2016/09/23	18:39:25	54.6
684	2016/09/23	18:39:26	55.2
685	2016/09/23	18:39:27	58.0
686	2016/09/23	18:39:28	60.3
687	2016/09/23	18:39:29	63.2
688	2016/09/23	18:39:30	66.7
689	2016/09/23	18:39:31	68.6
690	2016/09/23	18:39:32	68.4
691	2016/09/23	18:39:33	71.3
692	2016/09/23	18:39:34	75.2
693	2016/09/23	18:39:35	69.8
694	2016/09/23	18:39:36	65.9
695	2016/09/23	18:39:37	61.4
696	2016/09/23	18:39:38	58.5
697	2016/09/23	18:39:39	54.8
698	2016/09/23	18:39:40	52.1
699	2016/09/23	18:39:41	51.2
700	2016/09/23	18:39:42	50.3
701	2016/09/23	18:39:43	52.7
702	2016/09/23	18:39:44	53.0
703	2016/09/23	18:39:45	50.8
704	2016/09/23	18:39:46	50.2
705	2016/09/23	18:39:47	50.9
706	2016/09/23	18:39:48	51.1
707	2016/09/23	18:39:49	52.7
708	2016/09/23	18:39:50	52.0
709	2016/09/23	18:39:51	53.3
710	2016/09/23	18:39:52	55.3
711	2016/09/23	18:39:53	55.6
712	2016/09/23	18:39:54	57.0
713	2016/09/23	18:39:55	58.0
714	2016/09/23	18:39:56	57.6
715	2016/09/23	18:39:57	56.9
716	2016/09/23	18:39:58	55.8
717	2016/09/23	18:39:59	55.3
718	2016/09/23	18:40:00	54.9
719	2016/09/23	18:40:01	54.5
720	2016/09/23	18:40:02	54.1
721	2016/09/23	18:40:03	58.0
722	2016/09/23	18:40:04	59.5
723	2016/09/23	18:40:05	62.1
724	2016/09/23	18:40:06	61.8
725	2016/09/23	18:40:07	64.1
726	2016/09/23	18:40:08	69.0
727	2016/09/23	18:40:09	74.9
728	2016/09/23	18:40:10	82.8
729	2016/09/23	18:40:11	78.7
730	2016/09/23	18:40:12	76.4
731	2016/09/23	18:40:13	68.6
732	2016/09/23	18:40:14	60.7
733	2016/09/23	18:40:15	55.9
734	2016/09/23	18:40:16	54.5
735	2016/09/23	18:40:17	53.7
736	2016/09/23	18:40:18	52.3
737	2016/09/23	18:40:19	52.4
738	2016/09/23	18:40:20	53.0
739	2016/09/23	18:40:21	51.8
740	2016/09/23	18:40:22	53.6
741	2016/09/23	18:40:23	54.6
742	2016/09/23	18:40:24	52.9
743	2016/09/23	18:40:25	54.5
744	2016/09/23	18:40:26	52.8
745	2016/09/23	18:40:27	51.8
746	2016/09/23	18:40:28	52.8
747	2016/09/23	18:40:29	55.5
748	2016/09/23	18:40:30	56.7
749	2016/09/23	18:40:31	58.1
750	2016/09/23	18:40:32	58.0
751	2016/09/23	18:40:33	56.4
752	2016/09/23	18:40:34	55.1
753	2016/09/23	18:40:35	54.7
754	2016/09/23	18:40:36	54.4
755	2016/09/23	18:40:37	55.1
756	2016/09/23	18:40:38	56.1
757	2016/09/23	18:40:39	58.6
758	2016/09/23	18:40:40	61.7
759	2016/09/23	18:40:41	67.2
760	2016/09/23	18:40:42	70.1
761	2016/09/23	18:40:43	66.7
762	2016/09/23	18:40:44	64.5
763	2016/09/23	18:40:45	65.0
764	2016/09/23	18:40:46	69.5
765	2016/09/23	18:40:47	76.8
766	2016/09/23	18:40:48	71.3
767	2016/09/23	18:40:49	64.6
768	2016/09/23	18:40:50	61.2
769	2016/09/23	18:40:51	58.3
770	2016/09/23	18:40:52	55.3
771	2016/09/23	18:40:53	54.6
772	2016/09/23	18:40:54	54.9
773	2016/09/23	18:40:55	56.7
774	2016/09/23	18:40:56	58.5
775	2016/09/23	18:40:57	59.6
776	2016/09/23	18:40:58	60.1
777	2016/09/23	18:40:59	58.5
778	2016/09/23	18:41:00	55.9

779	2016/09/23	18:41:01	55.7
780	2016/09/23	18:41:02	55.5
781	2016/09/23	18:41:03	59.0
782	2016/09/23	18:41:04	59.4
783	2016/09/23	18:41:05	62.2
784	2016/09/23	18:41:06	64.8
785	2016/09/23	18:41:07	66.1
786	2016/09/23	18:41:08	75.5
787	2016/09/23	18:41:09	72.0
788	2016/09/23	18:41:10	78.5
789	2016/09/23	18:41:11	85.0
790	2016/09/23	18:41:12	78.0
791	2016/09/23	18:41:13	76.4
792	2016/09/23	18:41:14	65.2
793	2016/09/23	18:41:15	61.5
794	2016/09/23	18:41:16	61.2
795	2016/09/23	18:41:17	61.4
796	2016/09/23	18:41:18	63.1
797	2016/09/23	18:41:19	62.9
798	2016/09/23	18:41:20	63.2
799	2016/09/23	18:41:21	64.0
800	2016/09/23	18:41:22	66.4
801	2016/09/23	18:41:23	70.0
802	2016/09/23	18:41:24	74.4
803	2016/09/23	18:41:25	73.9
804	2016/09/23	18:41:26	74.2
805	2016/09/23	18:41:27	77.9
806	2016/09/23	18:41:28	72.9
807	2016/09/23	18:41:29	71.2
808	2016/09/23	18:41:30	77.4
809	2016/09/23	18:41:31	75.7
810	2016/09/23	18:41:32	69.1
811	2016/09/23	18:41:33	63.7
812	2016/09/23	18:41:34	59.3
813	2016/09/23	18:41:35	58.1
814	2016/09/23	18:41:36	57.7
815	2016/09/23	18:41:37	58.8
816	2016/09/23	18:41:38	59.5
817	2016/09/23	18:41:39	60.0
818	2016/09/23	18:41:40	59.8
819	2016/09/23	18:41:41	63.6
820	2016/09/23	18:41:42	67.7
821	2016/09/23	18:41:43	74.5
822	2016/09/23	18:41:44	69.4
823	2016/09/23	18:41:45	65.0
824	2016/09/23	18:41:46	62.6
825	2016/09/23	18:41:47	58.6
826	2016/09/23	18:41:48	56.2
827	2016/09/23	18:41:49	55.3
828	2016/09/23	18:41:50	57.5
829	2016/09/23	18:41:51	57.7
830	2016/09/23	18:41:52	58.0
831	2016/09/23	18:41:53	60.0
832	2016/09/23	18:41:54	64.2
833	2016/09/23	18:41:55	69.6
834	2016/09/23	18:41:56	73.3
835	2016/09/23	18:41:57	70.6
836	2016/09/23	18:41:58	63.0
837	2016/09/23	18:41:59	59.6
838	2016/09/23	18:42:00	58.2
839	2016/09/23	18:42:01	58.2
840	2016/09/23	18:42:02	57.2
841	2016/09/23	18:42:03	55.7
842	2016/09/23	18:42:04	54.4
843	2016/09/23	18:42:05	53.6
844	2016/09/23	18:42:06	54.5
845	2016/09/23	18:42:07	58.4
846	2016/09/23	18:42:08	63.1
847	2016/09/23	18:42:09	66.9
848	2016/09/23	18:42:10	71.6
849	2016/09/23	18:42:11	69.9
850	2016/09/23	18:42:12	66.5
851	2016/09/23	18:42:13	66.5
852	2016/09/23	18:42:14	69.9
853	2016/09/23	18:42:15	73.9
854	2016/09/23	18:42:16	72.8
855	2016/09/23	18:42:17	66.6
856	2016/09/23	18:42:18	63.5
857	2016/09/23	18:42:19	61.4
858	2016/09/23	18:42:20	59.9
859	2016/09/23	18:42:21	58.3
860	2016/09/23	18:42:22	56.9
861	2016/09/23	18:42:23	54.6
862	2016/09/23	18:42:24	54.3
863	2016/09/23	18:42:25	53.8
864	2016/09/23	18:42:26	51.8
865	2016/09/23	18:42:27	51.2
866	2016/09/23	18:42:28	52.8
867	2016/09/23	18:42:29	50.4
868	2016/09/23	18:42:30	51.3
869	2016/09/23	18:42:31	52.0
870	2016/09/23	18:42:32	52.4
871	2016/09/23	18:42:33	52.6
872	2016/09/23	18:42:34	53.5
873	2016/09/23	18:42:35	54.9
874	2016/09/23	18:42:36	56.7
875	2016/09/23	18:42:37	60.4
876	2016/09/23	18:42:38	63.1
877	2016/09/23	18:42:39	65.0

878	2016/09/23	18: 42: 40	68. 0
879	2016/09/23	18: 42: 41	69. 7
880	2016/09/23	18: 42: 42	68. 6
881	2016/09/23	18: 42: 43	68. 6
882	2016/09/23	18: 42: 44	69. 6
883	2016/09/23	18: 42: 45	67. 8
884	2016/09/23	18: 42: 46	65. 3
885	2016/09/23	18: 42: 47	64. 7
886	2016/09/23	18: 42: 48	67. 0
887	2016/09/23	18: 42: 49	67. 8
888	2016/09/23	18: 42: 50	65. 6
889	2016/09/23	18: 42: 51	64. 3
890	2016/09/23	18: 42: 52	63. 8
891	2016/09/23	18: 42: 53	66. 4
892	2016/09/23	18: 42: 54	68. 3
893	2016/09/23	18: 42: 55	65. 6
894	2016/09/23	18: 42: 56	61. 7
895	2016/09/23	18: 42: 57	59. 6
896	2016/09/23	18: 42: 58	58. 1
897	2016/09/23	18: 42: 59	57. 1
898	2016/09/23	18: 43: 00	57. 5
899	2016/09/23	18: 43: 01	56. 2
900	2016/09/23	18: 43: 02	55. 6