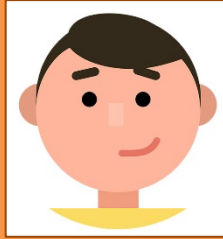




# COVID-19 SCENARIO CHART: SUPERVISED TK-12 SCHOOL EXPOSURE

## Close Contact\* No Symptoms Unvaccinated, Unmasked

- Quarantine at home for ten (10) days
- Monitor for symptoms fourteen (14) days
- Quarantine may be discontinued after seven (7) days with a negative test (antigen or molecular) on Day Five (5) or later if they remain asymptomatic



## Close Contact\* No Symptoms Vaccinated, Masked/Unmasked

- Monitor for symptoms fourteen (14) days and get tested on Day Five (5) after last contact with positive case
- If symptoms develop, immediately isolate and get tested



## STUDENTS TEST POSITIVE FOR COVID-19

- Inform school immediately
- Full at-home isolation for ten (10) days from the time symptoms started (or date of positive test)
- Students can return to school when they are feeling better AND fever-free for more than 24 hours without fever-reducing medications

## Close Contact\* Has Symptoms

- Return home and isolate immediately
- Get tested for COVID-19
- If positive, isolate for ten (10) days from start of symptoms or date of positive test
- If negative, continue to quarantine and return only if fever-free for more than 24 hours without fever-reducing medications



## Close Contact\* No Symptoms Unvaccinated, Masked

### SCHOOL SETTING ONLY - MODIFIED QUARANTINE

- Both the exposed student and the student with COVID-19 were wearing a face mask during the whole time of close contact
- Continues to attend school if they stay asymptomatic, wears a mask, monitors for symptoms for fourteen (14) days
- Does not participate in extra-curricular activities in school or community setting
- Get tested on Day Five (5) after last contact with positive case
- Modified quarantine may be discontinued after Day Seven (7) with a negative test on Day Five (5) or later if they remain symptom free



\*Close Contact is defined, masked or unmasked, as within six (6) feet for fifteen (15) cumulative minutes within a 24-hour period of someone with a confirmed case of COVID-19. Information in this chart is determined by guidance from the California Department of Public Health and Marin County Public Health.