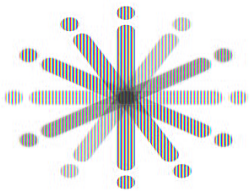




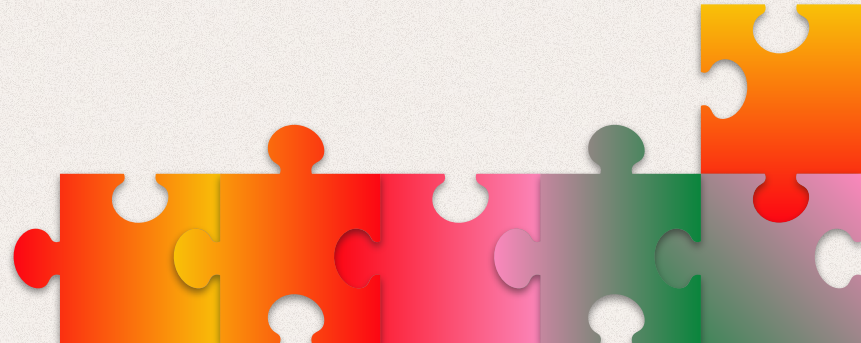
School Site Plans

Novato Unified School District

December 5, 2023



NOVATO
UNIFIED
SCHOOL
DISTRICT




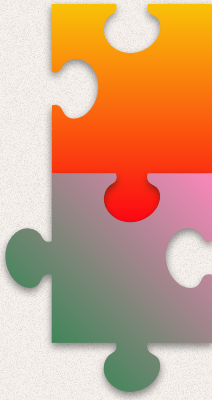


Each school will highlight:

- **Two successes from last year**
- **One change for this year**


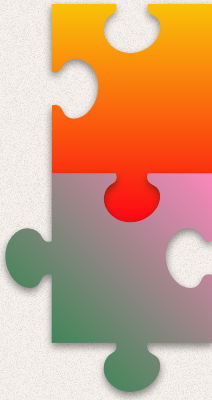


Common elements for **all NUSD schools**

- 
- **Collaboration among the sites**
 - **Community outreach**
 - **Focus on attendance**
- 



Common elements for **high schools**

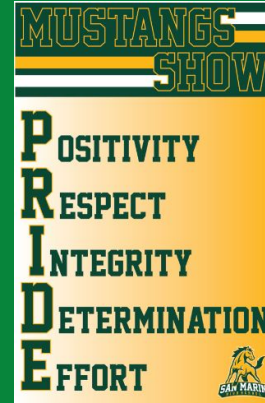
- 
- **Focusing on college and career readiness**
 - **Commitment to wellness**
 - **Increasing student voice and engagement**
- 

San Marin High School



Goal 1: Wellness Hub

- Hub Club Established
- Fully Staffed
- Digital Pass System
- In Hub & On Campus Engagement



Goal 2: Positive Behavioral Interventions and Supports (PBIS)

- Community Agreements
- Weekly Mini Lessons
- Student of the Month
- Academic and Behavioral Awards
- School-Wide Information System (SWIS) Data

2023-2024 Focus Area Goal: Equity

Developing skills and protocols for engaging in critical conversations about equity

Action 1: All staff meetings devoted to this goal (facilitated by Admin and Tenisha Tate)

Action 2: Learning the Critical Friends and Compassionate Curiosity Frameworks

Action 3: Using the frameworks for increasingly more difficult conversations

Action 4: Establish system wide changes based on discoveries

Culture of Caring

Bringing the Wellness Hub into our Wellness Campus



Novato High



- Weekly Wellness videos and events on relevant topics (Fentanyl)
- Use of Wellness for student “check-in/check-out” support + over 600 visits
- Frosh introduction to Hub & Team
- Wellness staff facilitates COST weekly

What's new? Setting the Stage...

- ★ New purpose statement

Novato High fosters a creative and inclusive community where we work together to learn, grow, access experiences, and create our own authentic paths.

- ★ New School Leadership Team (SLT)
Focus on professional learning
- ★ New focus on relationships & inclusion in the classroom

Development of English Learner Network to Support Students

- Summer network class for newcomers to prepare for school.
- “Clustering” of students into classes for advanced EL support with a few teachers
- Hiring of an EL Specialist to support and monitor students

Culture of Competence

22-23 Goal 1 Celebration:

We focused on one of the district Graduate Profile 6Cs each month:

- students were given a lesson to understand the concept
- staff created a list of students that demonstrated the 6C of the month
- students were celebrated with a luncheon



22-23 Goal 2 Celebration:

We used data to ensure resources were used efficiently and equitably to improve student learning through the expansion of multi-tiered systems of behavioral, academic, and social-emotional support:

- Data Specialist position
- MTSS (Multi-Tiered System of Support)
- PBIS (Positive Behavioral Interventions and Supports)
- COST (Coordination of Services Team)



MARIN OAKS

High School

WHAT'S NEW AT MARIN OAKS?

Magnolia Project is a North Bay Career Technical Education (CTE) non-profit, that offers a two-week, full-time internship opportunity for seniors during school hours.

Students:

- attended a pre-internship bootcamp
- participated in a two-week internship
- created a post-internship presentation



Magnolia Project
Internships for Seniors



Jay's Custom Exhaust & Tire



Creekwood Senior Home



H & J Tire



North Marin Community Services

Goal 2 Celebration (2022-23)

We focused on expanding NOVA's multi-tiered interventions and social-emotional supports:

- Students had access to a counselor as needed.
- Staff provided daily interaction for grades 1-8.
- The weekly newsletter included social-emotional resources.
- Students needing intervention were offered a variety of opportunities to receive support.
- Coordination of Services Team (COST) used to identify/support students.



NOVA

Independent Study

WHAT'S NEW in 2023-2024 AT NOVA?

- 6-year Western Association of Schools and Colleges (WASC) Accreditation
- 6th-grade was switched to a daily instruction format
- K-6 in-person activities offered monthly
- Field trips
- PBIS matrix
- PBIS posters
- Weekly NOVA newsletter
 - College and career information
 - Engagement opportunities
 - Student resources

Goal 3 Celebration (2022-23)

We focused on increasing ELA and Math performance levels:

- 65.86% students met/exceeded ELA standards
 - Up from 49.45% in 2021/2022
- 35.13% students met/exceeded Math standards.
 - Up from 24.18% in 2021/2022
- Positive Behavioral Interventions and Support (PBIS) plan developed for 23/24 implementation to increase student agency.



Questions for the High School Principals?





Common elements for **middle schools**

- **Creating sense of belonging**
- **Focusing on safety and making good choices**
- **Establishing academic strategies for future success**



Sinaloa Middle School



2022-23 Math Increased CAASPP Scores

Math scores increased by 11%.

- Multi-tiered systems of support (MTSS)
 - teacher check-ins/student conferences
 - parent-teacher conferences
 - positive rewards
 - pull-out support: study skills class w/ intervention specialist and behaviorist
 - math intervention class by grade level
 - after-school math intervention classes
- Routine data collection and monitoring
 - Galileo assessment (3x yearly)
 - DESSA social emotional assessment
 - D/F list review (every six weeks)
 - D/F list student conferences, goal setting, and monitoring with school counselor.
- ELD program
 - one EL specialist
 - four ELD sections, one for each level
 - push-in support from ELD specialists in math and reading
 - Increased reclassification (20% → 24%)



2022-23 PBE Proficiency Based Education

- Identification of essential learning targets
- Development of proficiency scales
- Implementation of proficiency scales in majority of math and science classes
- Student interactions with scales and self-reflection on their learning progression



2023-24 Safety and Wellness



- Student voice and leadership opportunities
- Student recognition weekly and monthly
- Outreach to/inclusion of Hispanic families
- Reduce chronic absenteeism rate from 13.5% to less than 10%.
- Foster a positive culture: building empathy and climate of respect
- Provide daily counseling support (North Marin Community Services &
- Open wellness center with community support (Leadership Novato and PTSA)
- Reimagine the school counselor model to fully staff and support both a wellness center and an academic center.

San Jose Middle School



Successes

Implementation of PBIS

- Student Leadership-driven #ScorpionStrong system
- Behavior Matrix created and documented in all student planners



Growth of AVID Program

- AVID sections grew from just 7th/8th to 6th - 8th

Galileo ELA and Math Assessments

- Growth in ELA and math for students meeting/exceeding standards (2022 EOY → 2023 EOY)

Areas of Focus

Culture of Excellence

- PBE student & staff checklists to monitor & measure implementation of proficiency based education

Culture of Competence

- Shift from Scorpion Success Center to Intervention (targeted, measurable, data-driven)

Culture of Caring

- Community building through school wide events, driven by ASB, ELAC, & PTA (increase in sense of belonging and attendance)



Hamilton TK-8 School



2022-2023 Area of Success Increased CAASPP scores

- Dedicated grade level aides in K-5th
- Small group pull out with instructional aides
- Increase Rise in Reading and Rise in Math interventions to support more students
- Targeted ELD work during Universal Access (UA)
- Individualized data cycles with data specialist
- Creation and implementation of a CAASPP prep plan

2022-2023 Area of Success Implementation of Positive Behavioral Interventions and Supports

- Create school-wide expectations in each area on campus
- Reward positive behavior utilizing SOAR bucks and the SOAR store



2023-2024 Area of Focus Proficiency Based Education

- Each certificated staff member created a PBE goal based on where they are individually and where they would like to go
- Utilize staff meeting and site PD time to work on PBE goals
- Increase utilization of learning maps and scales with students
- Work in grade level/content area collaboratives

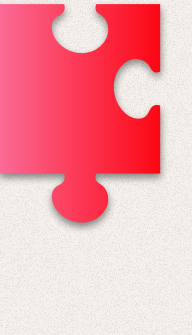
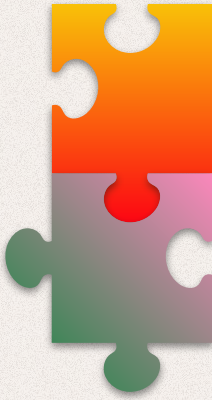
Becoming a Community School

**Questions
for the
Middle School
Principals?**





Common elements for **elementary schools**

- 
- **Establishing a love of learning**
 - **Building positive behavior expectations**
 - **Creating a sense of community**
- 



San Ramon Elementary

2022-23 Successful Outcome and Accomplishments

#1 Teaching and Learning

- Increased small group instruction for all students
- Universal Access targeted intervention success
- Data driven collaborative meetings to focus instruction
- Increased CAASPP scores overall in ELA and Math
- Implement Proficiency Based Education

#2 Behavior Supports and Systems

- Developed School-wide PBIS structures
- Created FINS for positive student recognition
- Weekly SSTs to support struggling students
- DESSA and counseling screeners for data to drive effectiveness



2023-24 Focus Area

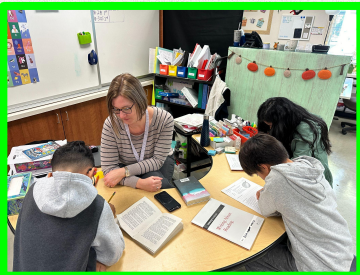
Attendance and Engagement

- Increase communication with community to create attendance awareness
- Develop weekly site Attendance Team meetings
- Incentivize to increase average daily attendance from 93.7% to 96%
- Create awareness to decreased chronic absenteeism from 16% to 8%



Rancho Elementary

Success



Small Group Differentiated Instruction

- Data based student groups
- Teachers, Intervention Teachers, Paraeducators, Data Teacher on Special Assignment (TOSA)

Implementation of Positive Behavioral Interventions and Supports (PBIS)

- Schoolwide Expectations - SOAR
- Rewards - Eagle Eyes
- Reflections and Restorative Circles

Focus Area

Proficiency Based Education

- Integration of scales and learning maps
- Common assessments
- Cross grade level articulation



Pleasant Valley Elementary



2022-2023: Success

Multi-Tiered Systems of Support (MTSS)

- Weekly Data Team Meetings
- Data Specialist and Data Cycles every 6-8 Weeks
- Intervention Groups for English Language Arts, English Language Development (ELD), and Mathematics
- DESSA Mini Groups for Social Emotional Support



2022-2023

Success

Positive Behavioral Interventions & Supports (PBIS) Tier I Implementation

- Eagles S.O.A.R
- School Wide PBIS Incentive Goals
- S.O.A.R Cards & Weekly Photo
- School Wide Expectations developed for major areas
- School Wide PBIS Assemblies

2023-2024 Focus:

Decrease Chronic Absenteeism from 14.5% to 9.8%
Increase Average Daily Attendance to 95.5%

- Work with Kirsten Grimm to develop Tier I and Tier II specific strategies to encourage school wide attendance while targeting and tailoring interventions to chronically absent students.

2022-2023: Success & Focus

Proficiency Based Education

- Develop and implement Essential Standards based assessments.
- Every classroom utilizing at least two Learning Maps per trimester.

Olive Elementary

2022 - 2023 ACHIEVEMENTS

Data Cycles and Proficiency-Based Education (PBE)

- Data Cycles every six to eight weeks - targeted and intentional small group instruction in the classroom during Universal Access
- 1:1 or small group instruction with Reading or Math Intervention teacher
- Small group instruction with English Learner Specialist

Implementation of school-wide Tier I Positive Behavioral Interventions and Supports (PBIS)

- Creating school wide expectations for each area of campus using common language
- Monthly character trait student recognition and rewards system



2023 - 2024 FOCUS AREA

Decrease overall chronic absenteeism from 20.5% to 15% and Average Daily Attendance from 93% to 95%

- Attendance challenges
- School wide incentives
- Targeted attendance support for Chronically Absent students



Continue the work around implementation of PBIS, Data Cycles, and PBE



Lynwood Elementary

2022-23 Success

Positive and inclusive culture:

- Established a Family Center and the Mariposa Restorative Room

High quality learning experiences:

- Identified bilingual curriculum in all subjects areas including social emotional learning and phonemic awareness/phonics supplements

2023-24 Focus

Multi-tiered system of support:

- Providing interventions in Spanish literacy, English literacy, math, and social emotional learning using data to identify priorities and determine grouping

Lu Sutton Elementary

2022-2023: Success

Implemented Tier 1 Positive Behavioral Interventions and Supports (PBIS) strategies to teach and reinforce expected behaviors

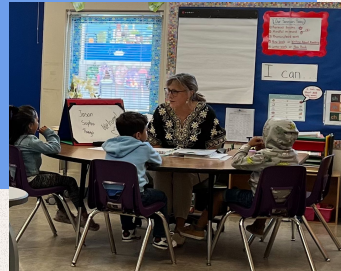
- School Wide Expectations
- Reinforcement system



2022-2023 Success

Integrated a robust Universal Access system to support the needs of all students

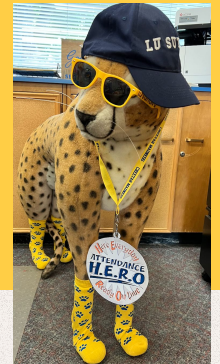
- Data Specialist
- Reading, Math, & English Language Development (ELD) Teachers
- Paraprofessionals



2023-2024 Focus:

Decrease Chronic Absenteeism by 7% and increase Average Daily Attendance to 95%.

- Tier I school wide, classroom, and grade level incentives
- Tier II targeted strategies



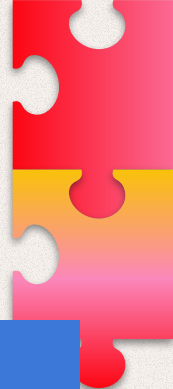
KIND - SAFE - RESPECTFUL - RESPONSIBLE
 BRAVE - HONEST - AMAZING - FUNNY
 ATHLETIC - SPONTANEOUS - CREATIVE
 SMART - HUMBLE - GENTLE - LOVING
 NICE - WISE - VIBRANT - GRATEFUL
 UNIQUE - AWESOME - SILLY - PROUD
 SINCERE
 OPTIMISTIC
 YOU - EPIC
 PATIENT
 TIDY
 LOYAL - FAIR - FUN - LOVE - CHEERFUL
 ENTHUSIASTIC - POLITE - FREE - WITTY
 CHARMING - HELPFUL - FRIENDLY - REAL
 DAZZLING - FOCUSED - COOL - GOOD
 HAPPY - UNIQUE - BOLD - WARM - TRUE

BE

FLEXIBLE
 MINDFUL
 DRIVEN - FUN
 GENEROUS
 OPEN

LOMA VERDE

Loma Verde Elementary



2022-2023 Success

Implementation of Positive Behavior Intervention and Supports (PBIS) Tier 1 strategies

- Student Behavior Expectations Matrix
- Bear Bravos



2022-2023 Success

ELPAC Reclassifications

- Targeted ELD support with a focus on ELPAC test domains
- Bear Den



2023-2024 Focus

Data Cycle Meetings with Data Specialist

6-8 Week Cycles

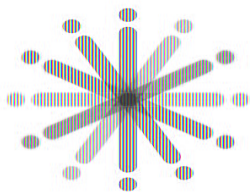
Essential Standards

ELA and Math



**Questions
for the
Elementary
School
Principals?**





NOVA
UNIFIED
SCHOOL
DISTRICT

